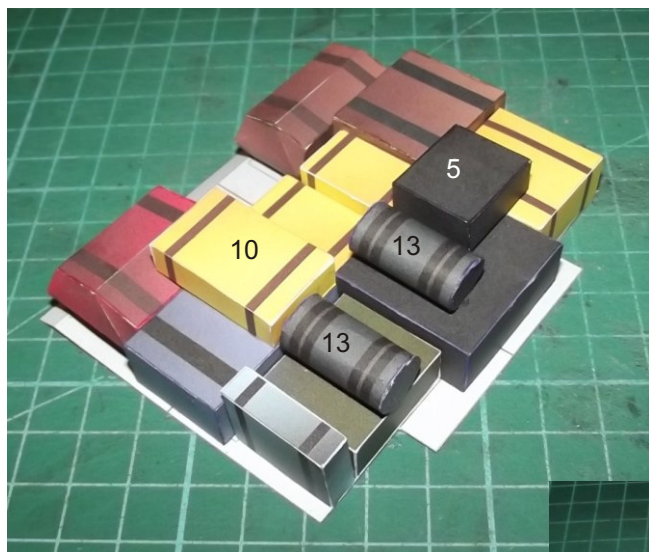
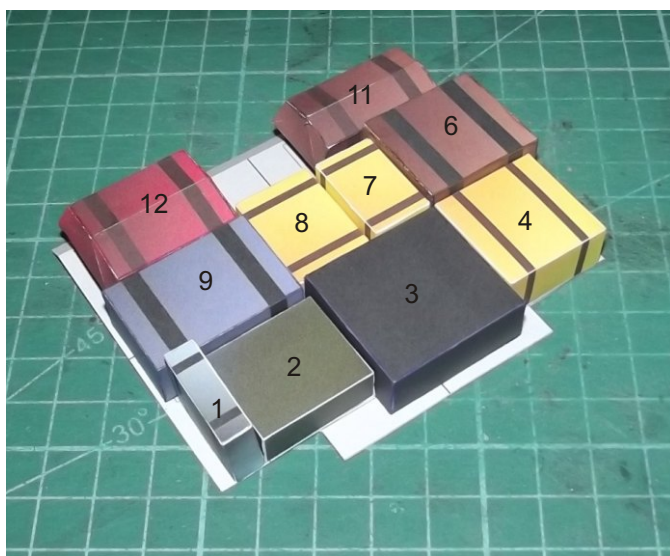
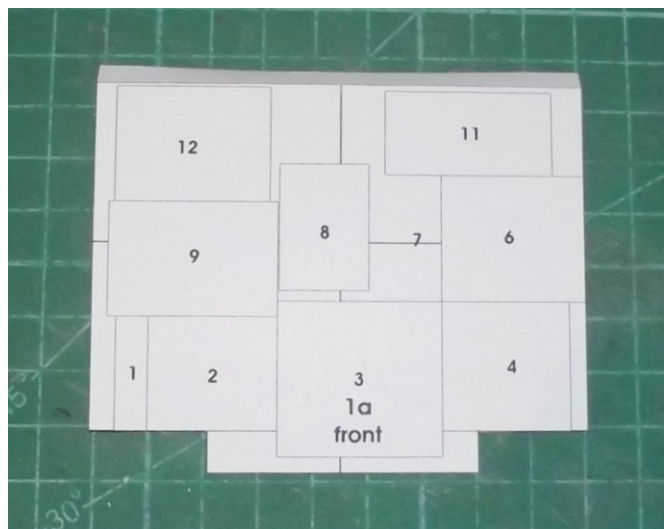


for COLONIAL SNOWRAM

Assembly

The roof part 1a enables you to display your model with or without luggage. Fold all luggage parts to simple boxes and glue them to the roof part where indicated.



Part 14 is a tarpaulin. Cut it out, crumple it up a bit and drape it over the luggage. You don't need glue.





Put the roof part onto your Landram model. You don't need to attach it permanently. This way you are able to display your model with or without luggage.



Option:

Use the straps to tie and fasten the luggage (optional). If you use them paint the back side black or glue another strap behind it so that the front and back sides are textured.

Done!