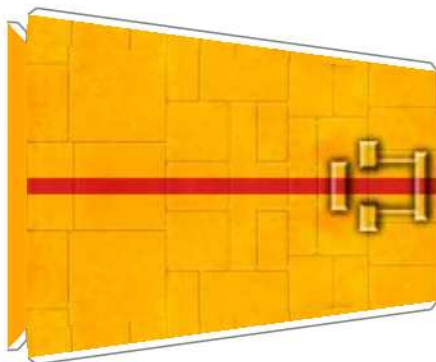
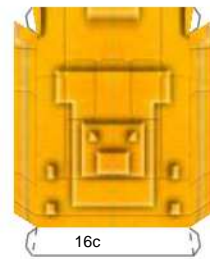
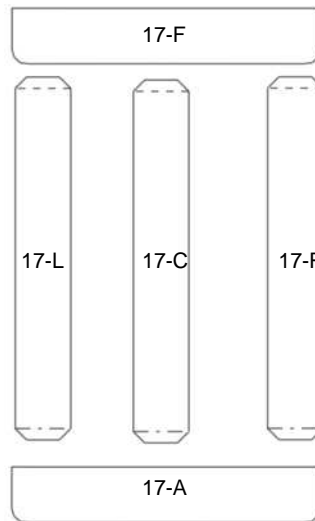


17 + 18

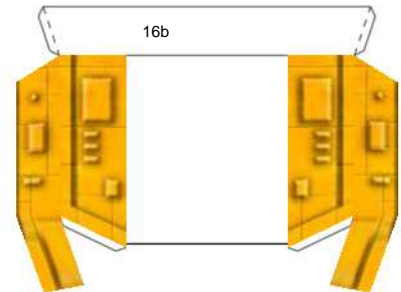


8

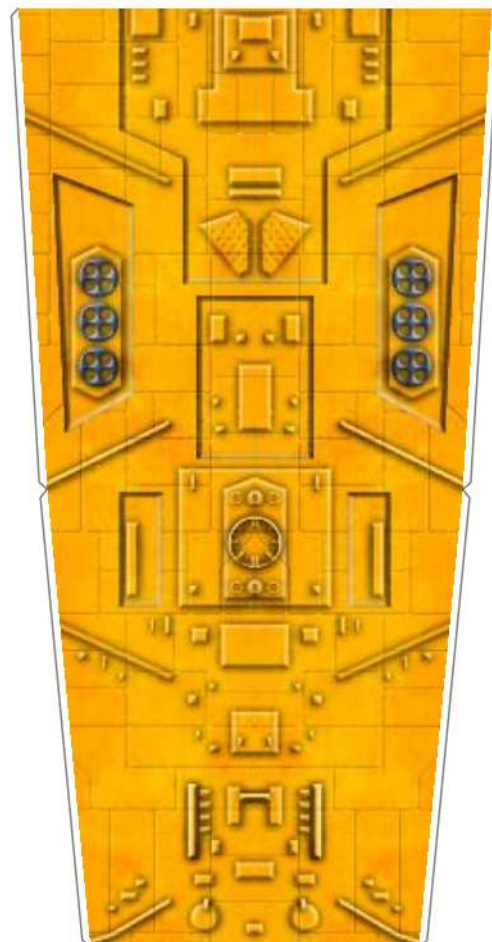
These formers are provided to add support to part 17 if required.



16c

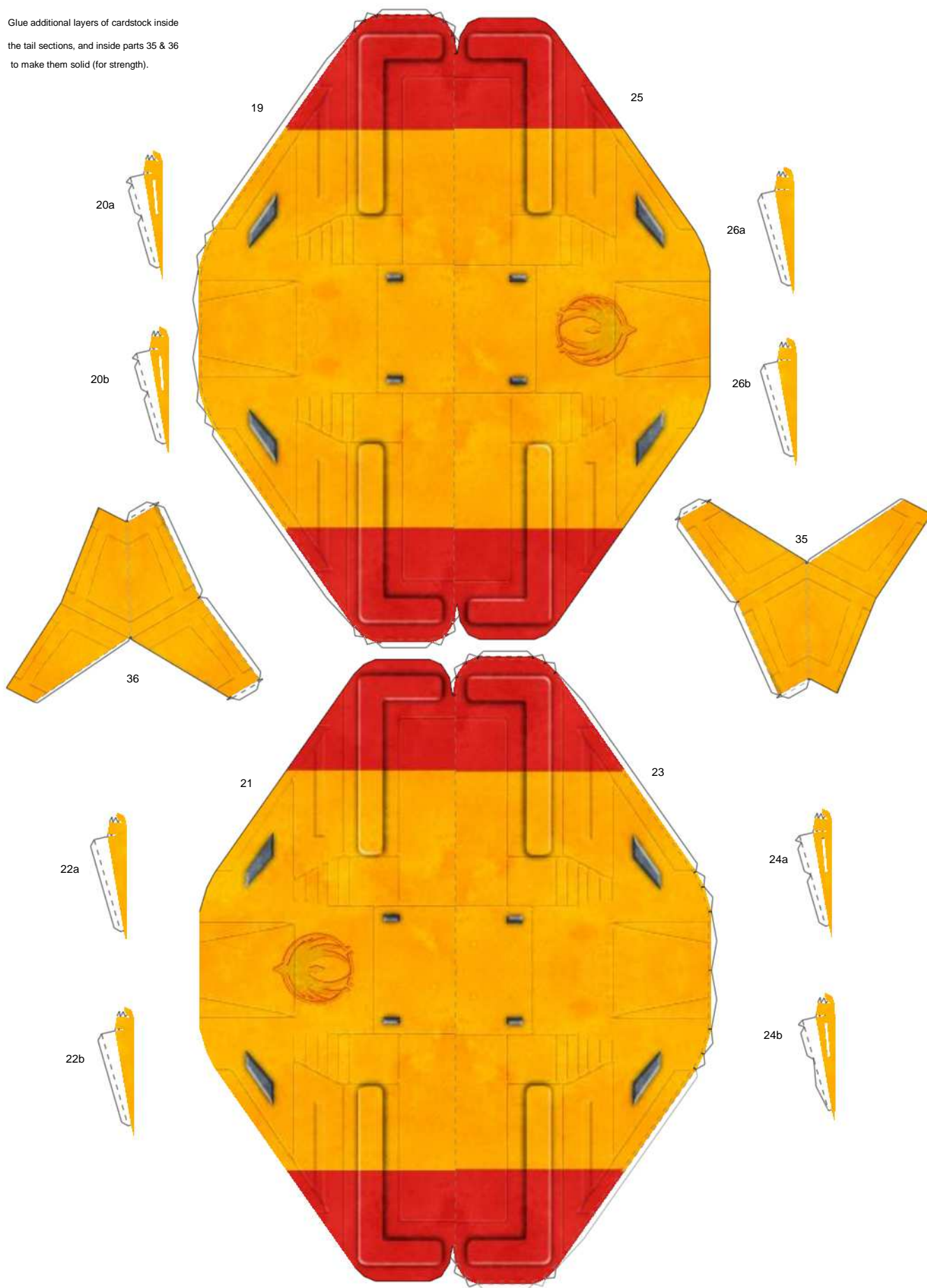


16b



9+10

Glue additional layers of cardstock inside the tail sections, and inside parts 35 & 36 to make them solid (for strength).





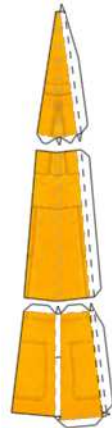
27



29



30



32



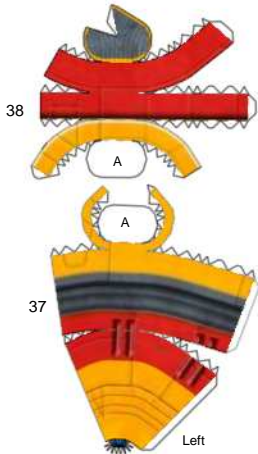
28

Left Engine and mount

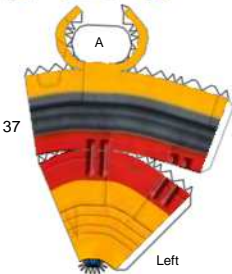


31

Right Engine and mount



38

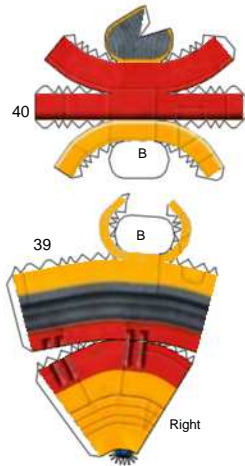


37

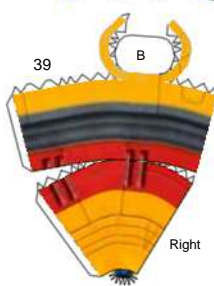
Left

Assemble the pieces,  
then glue A to A, and B to B

Upper Engines

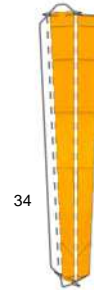


40



39

Right

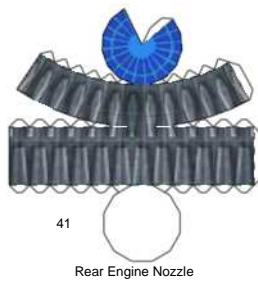


34

Upper Engine and mount



33



41

Rear Engine Nozzle



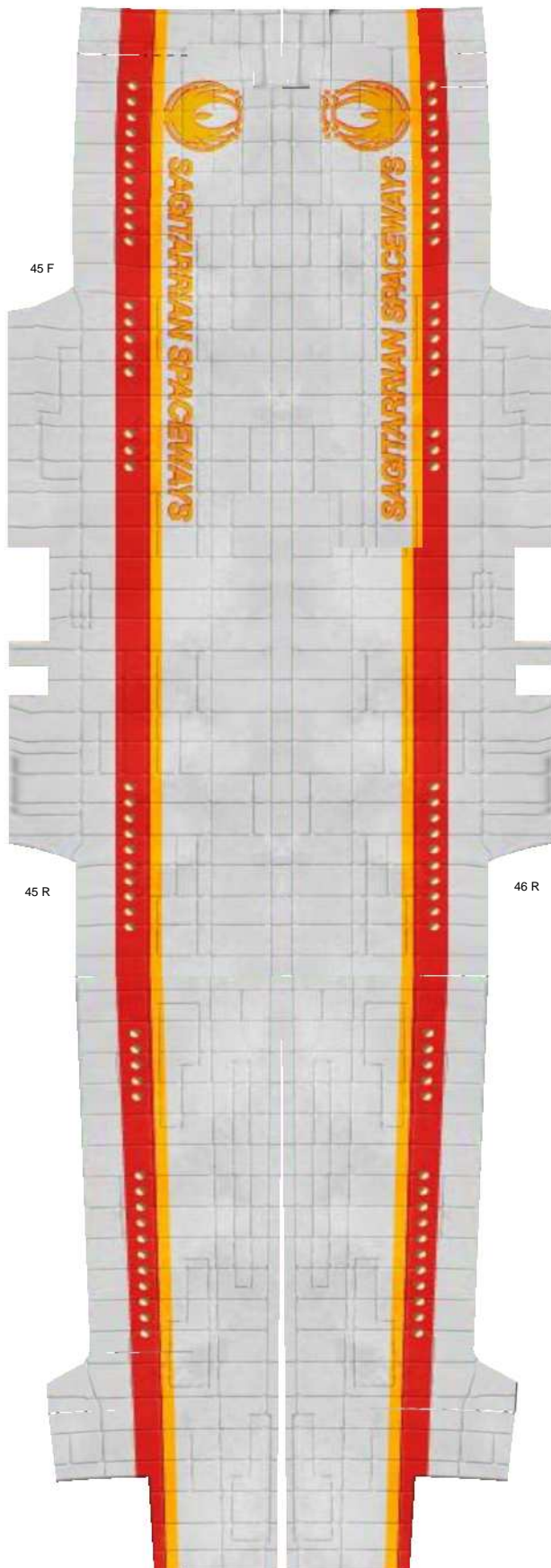
42  
Left



43  
Right

Auxiliary Engines

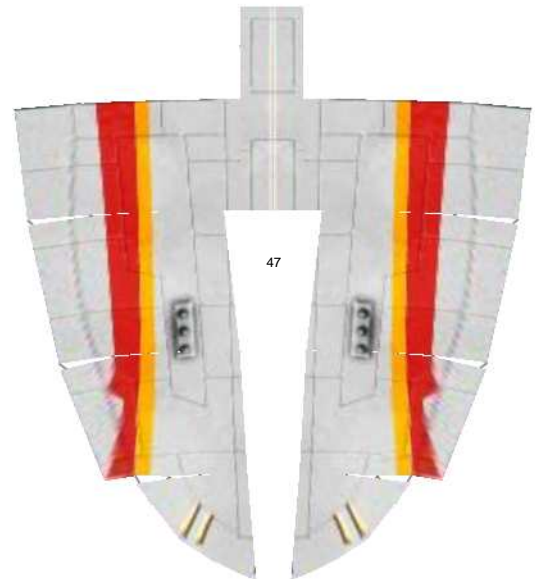


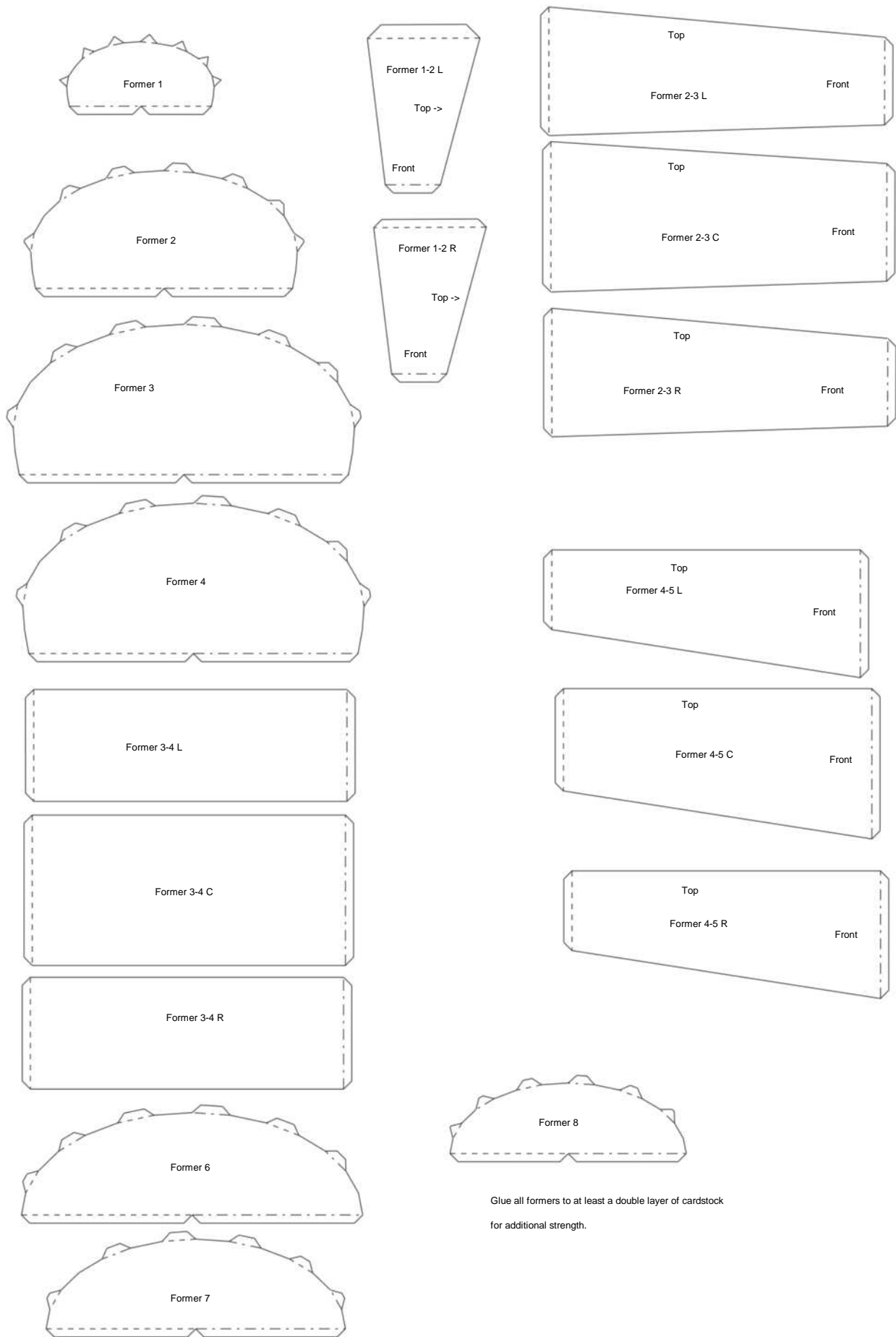


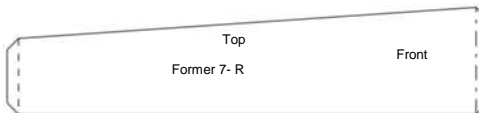
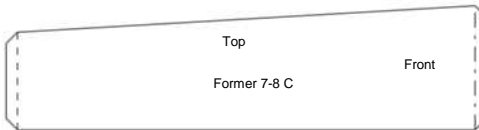
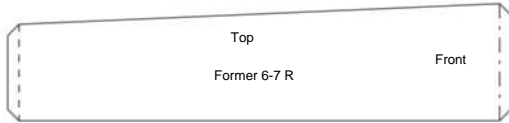
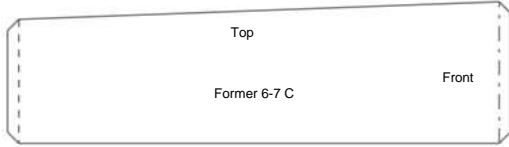
46 F

Hull Overlay pieces. These are optional.

If you use them use part 44a on the nose,  
otherwise use part 44b.







Spacers for mounting of hull overlays



Glue all formers and spacers to at least a double layer of cardstock for additional strength.



