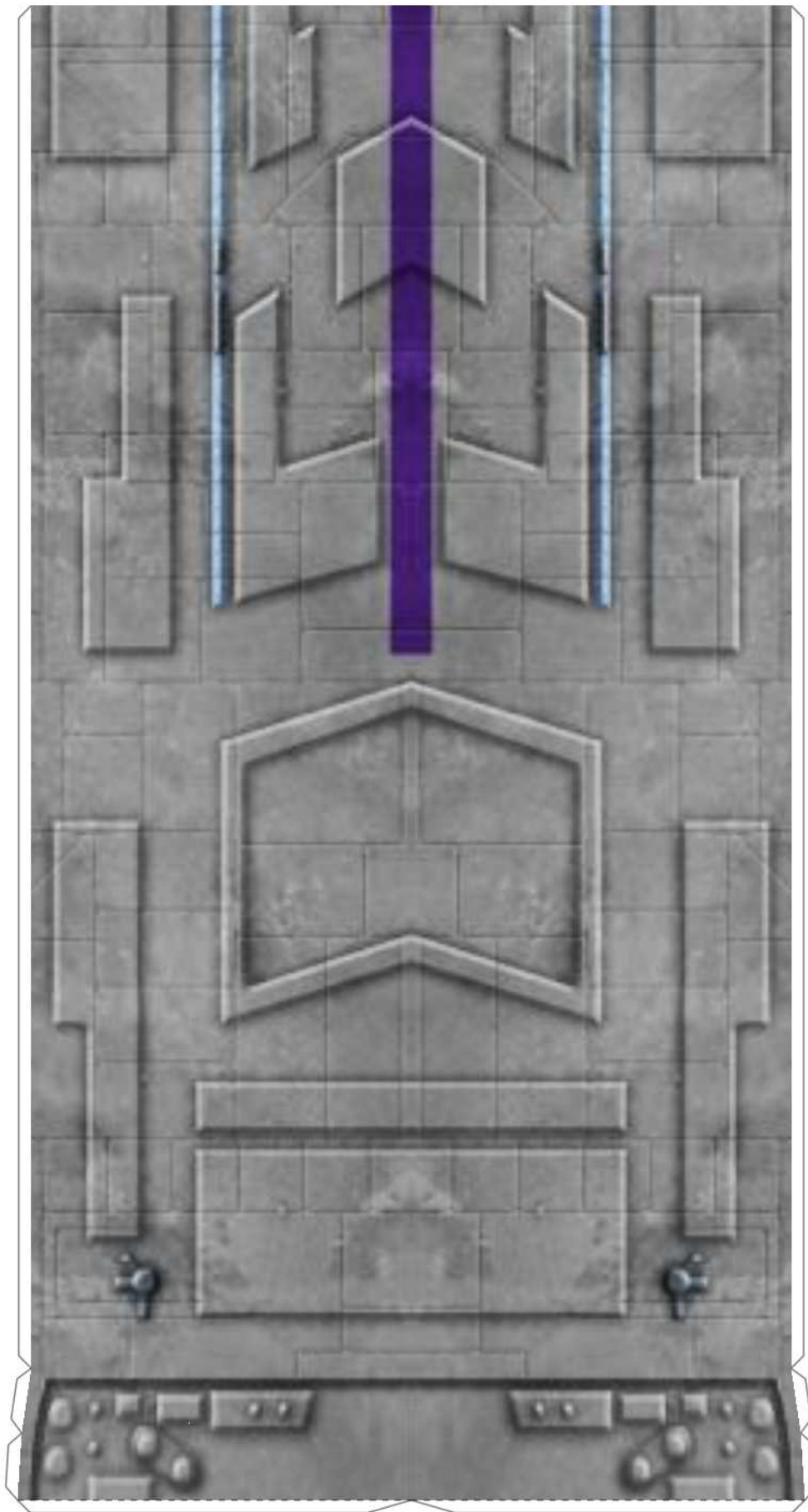
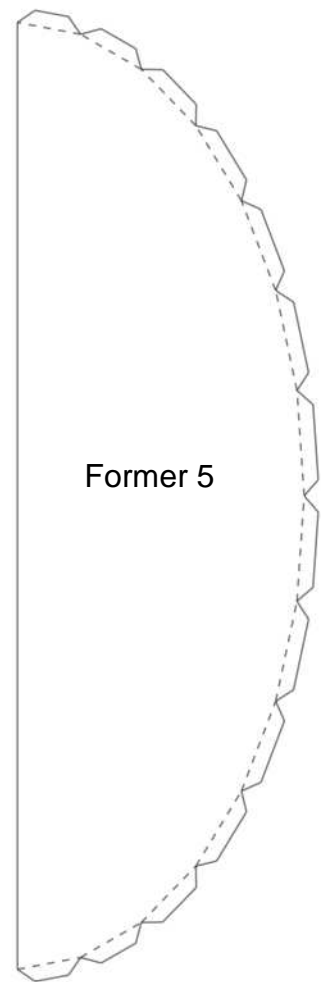


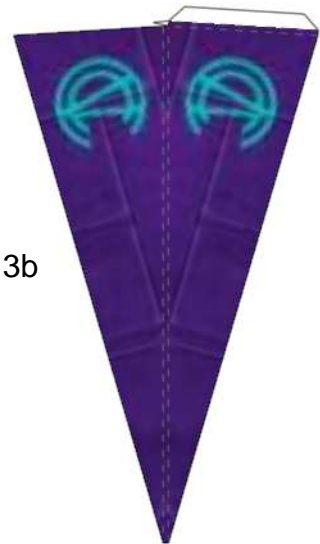
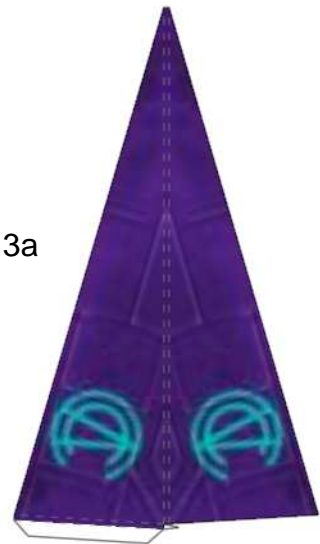
1



2



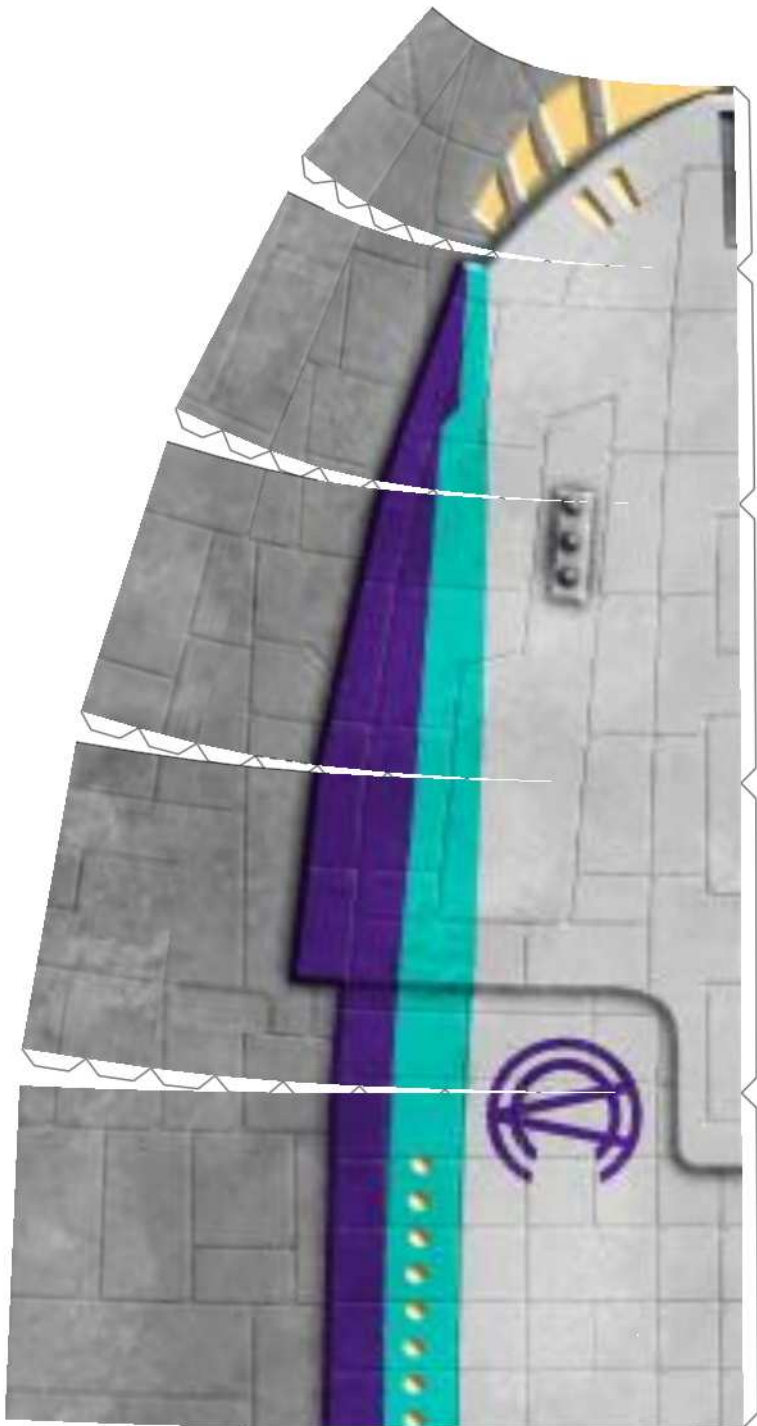
Former 5



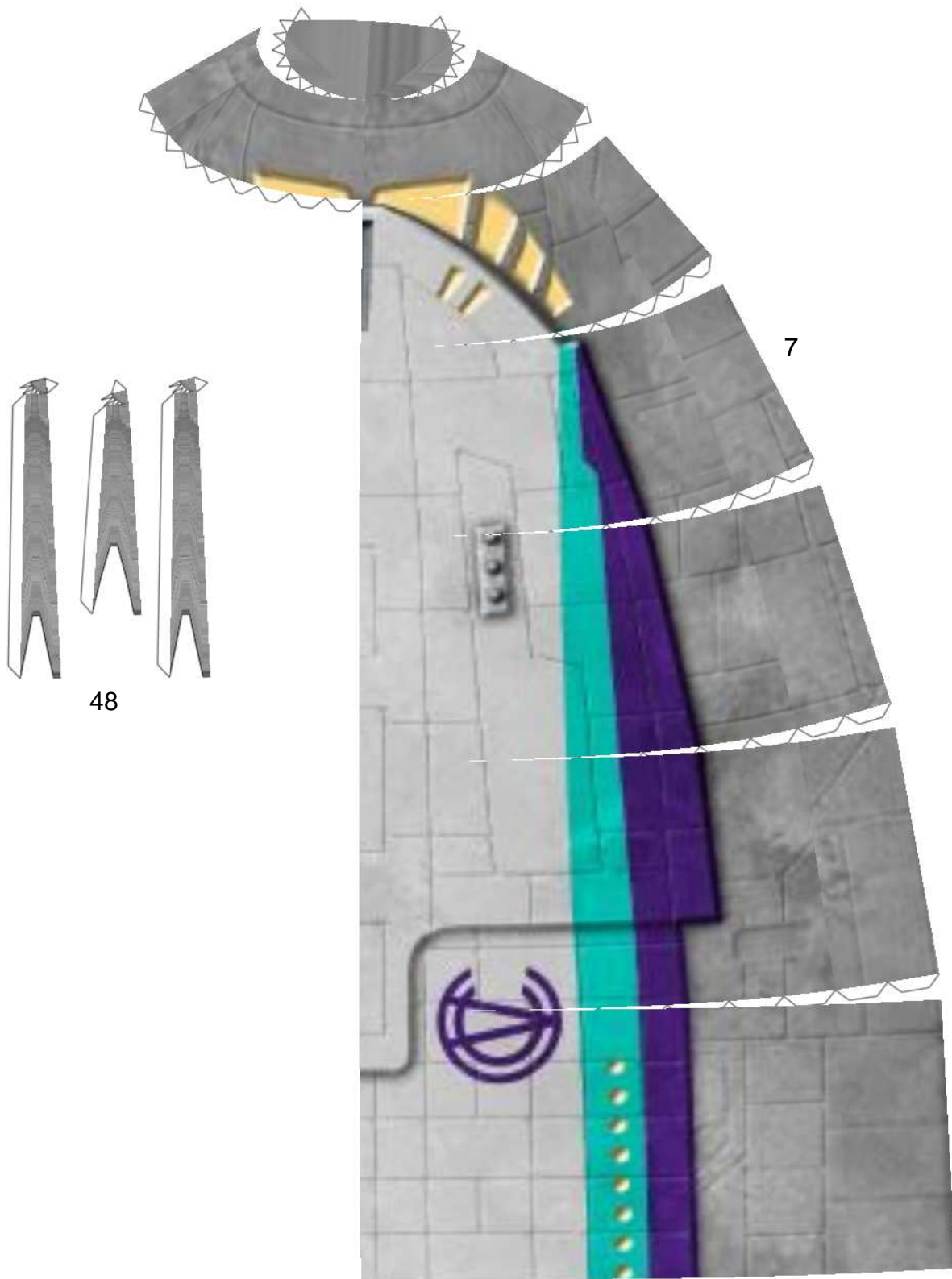
4

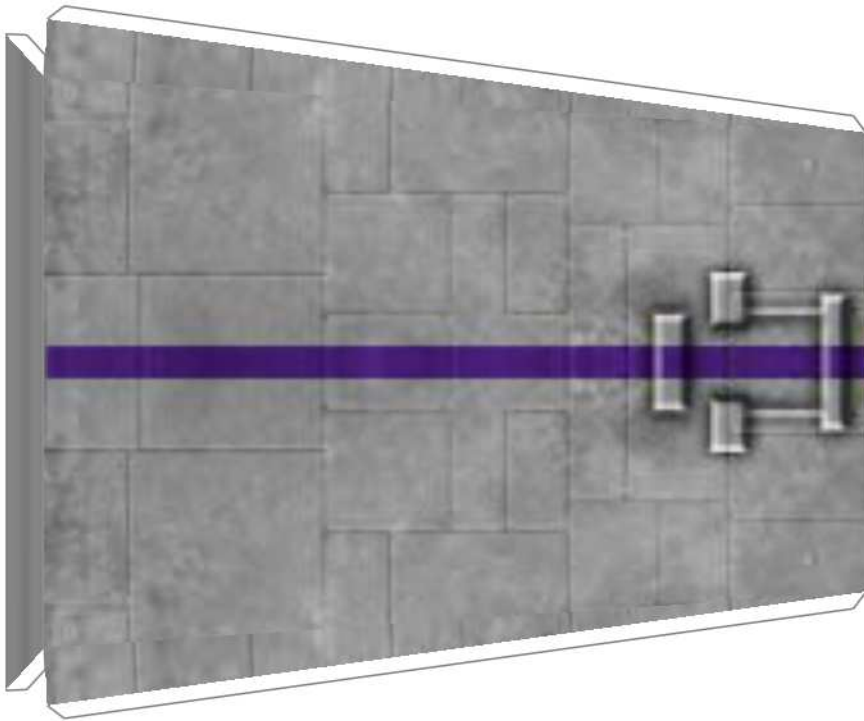


5

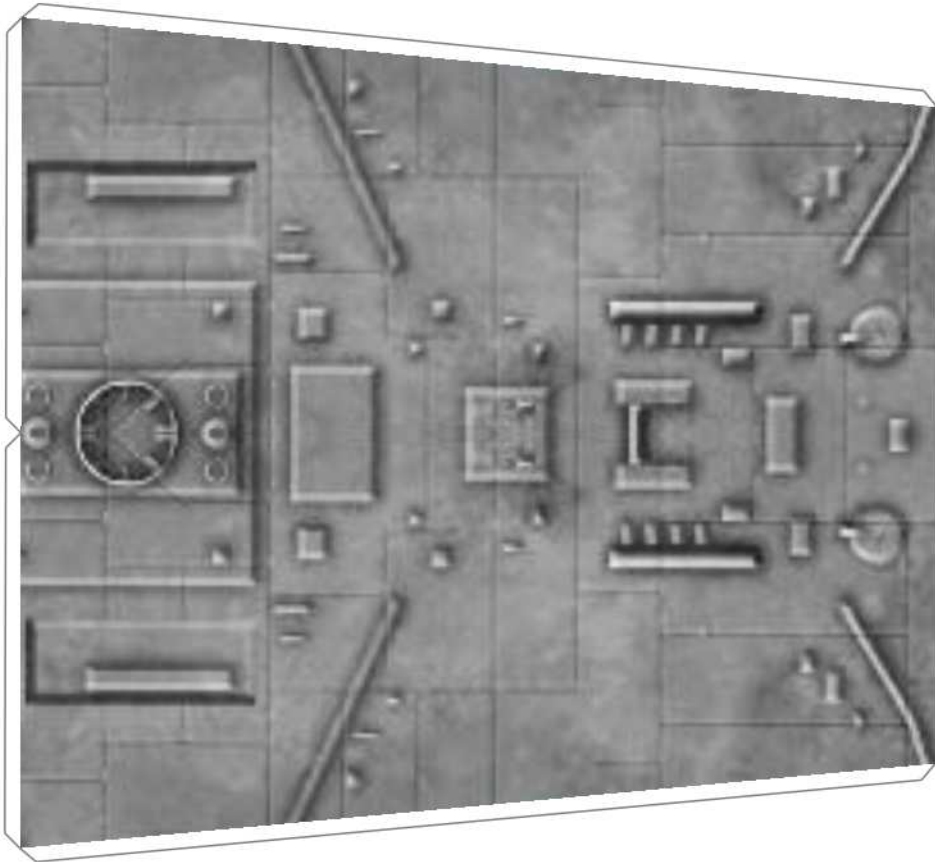


6

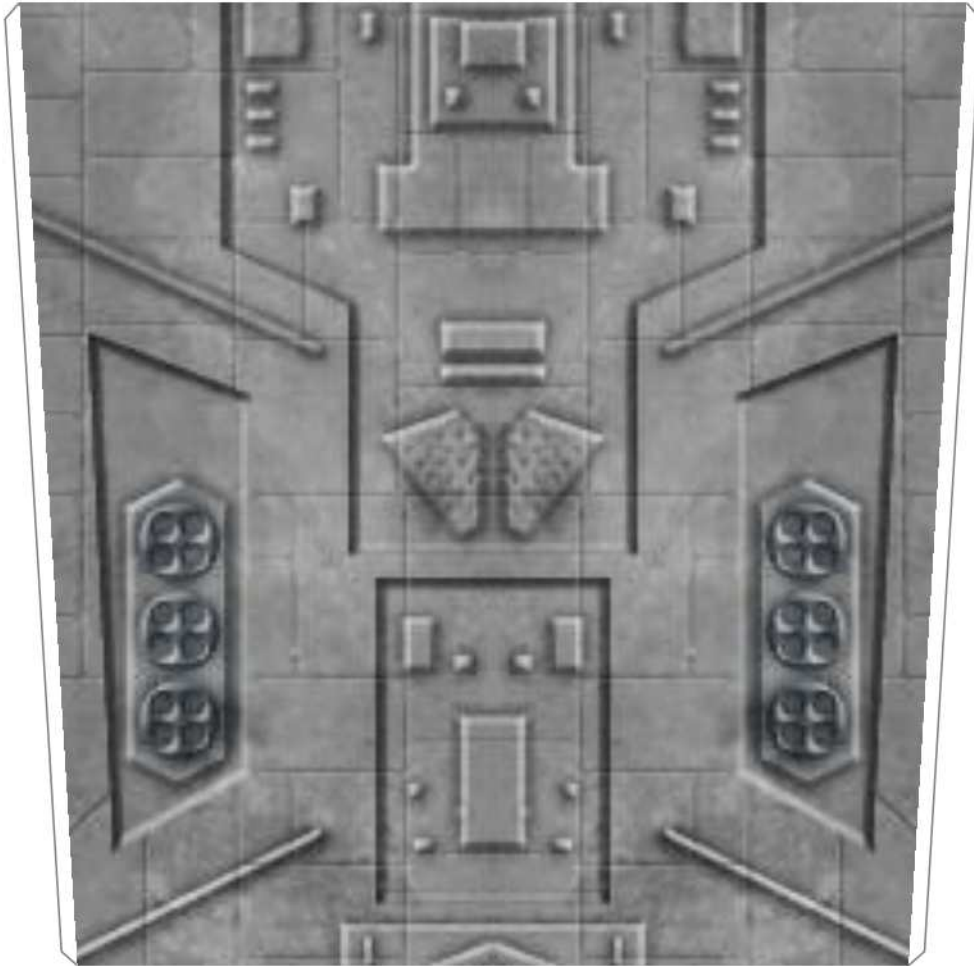




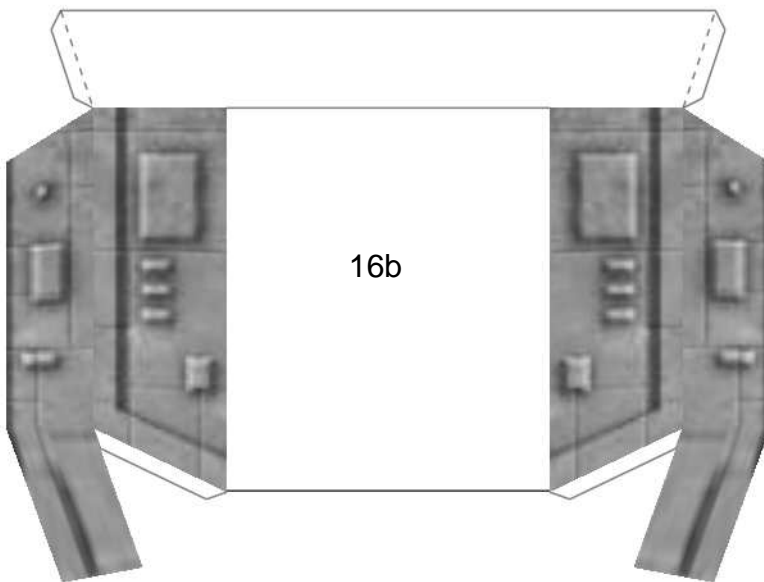
8



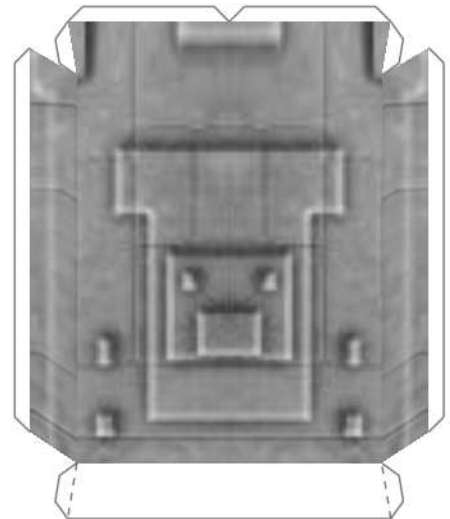
9



10



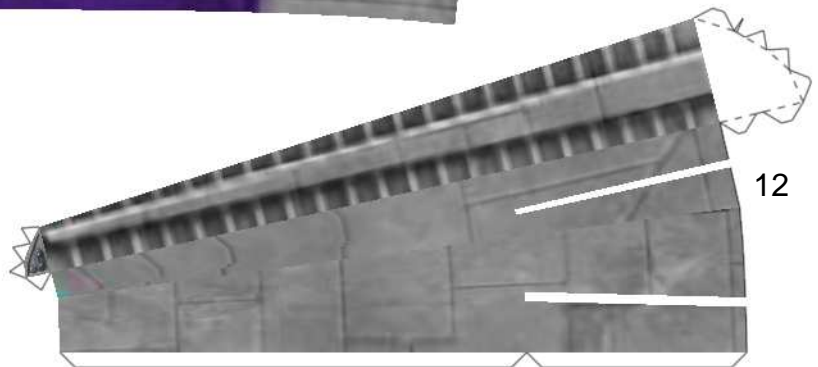
16b



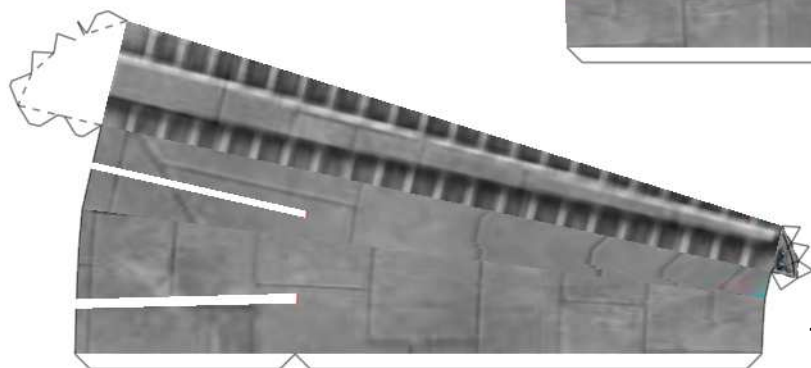
16c



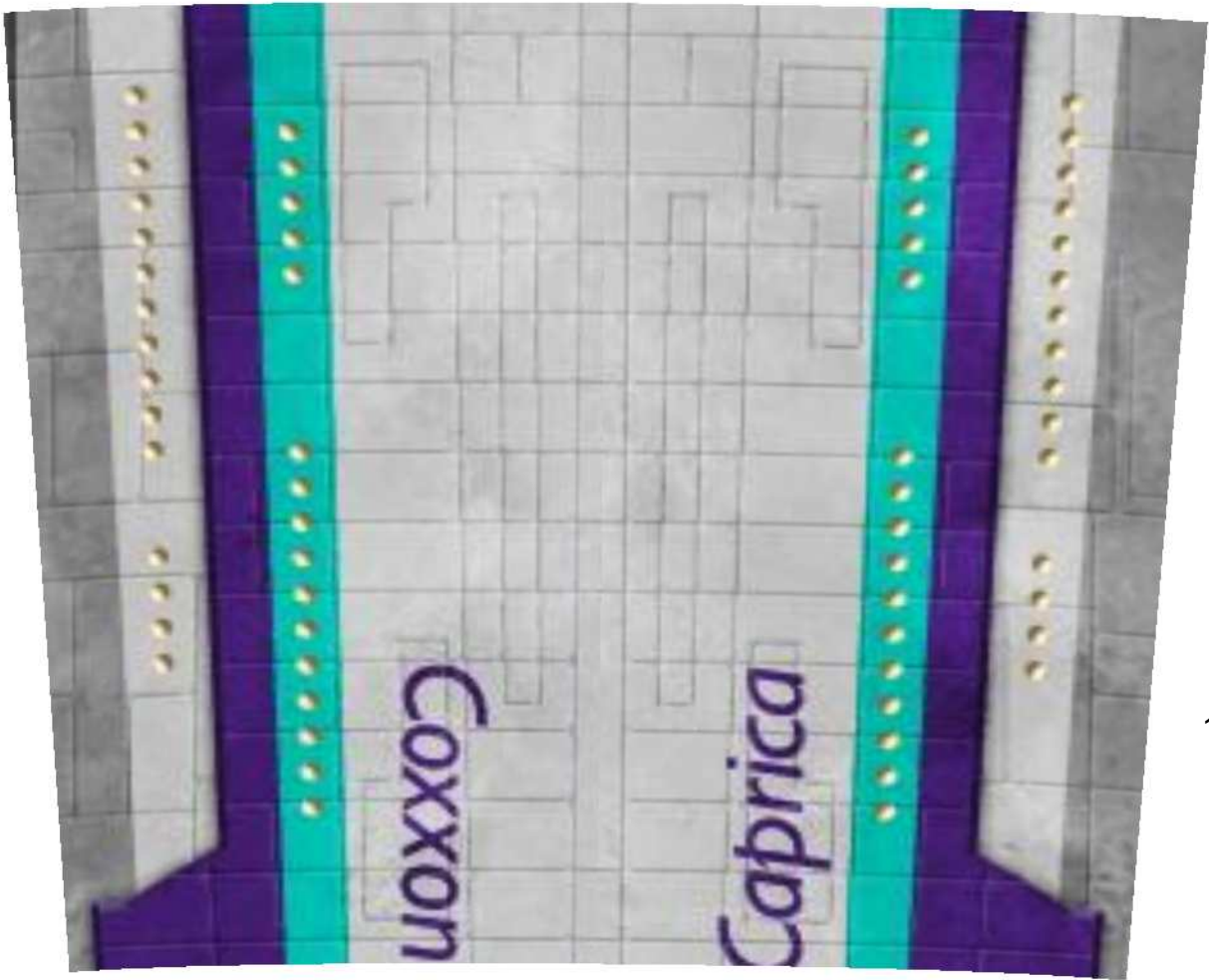
11



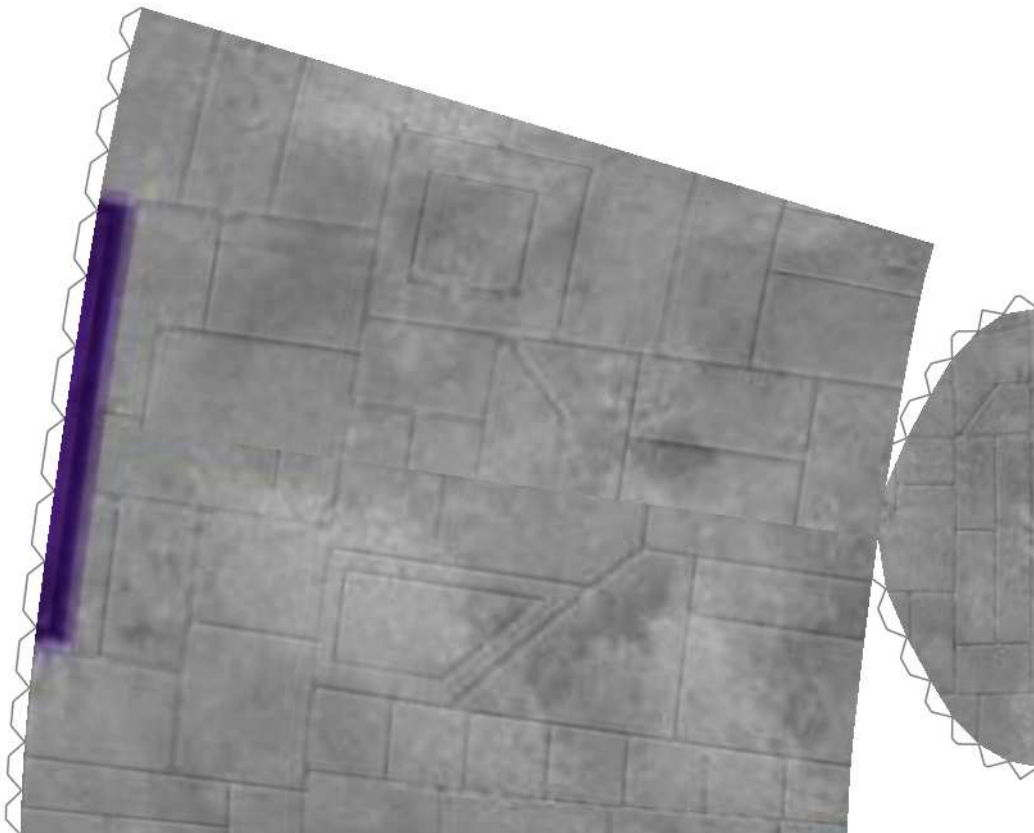
12



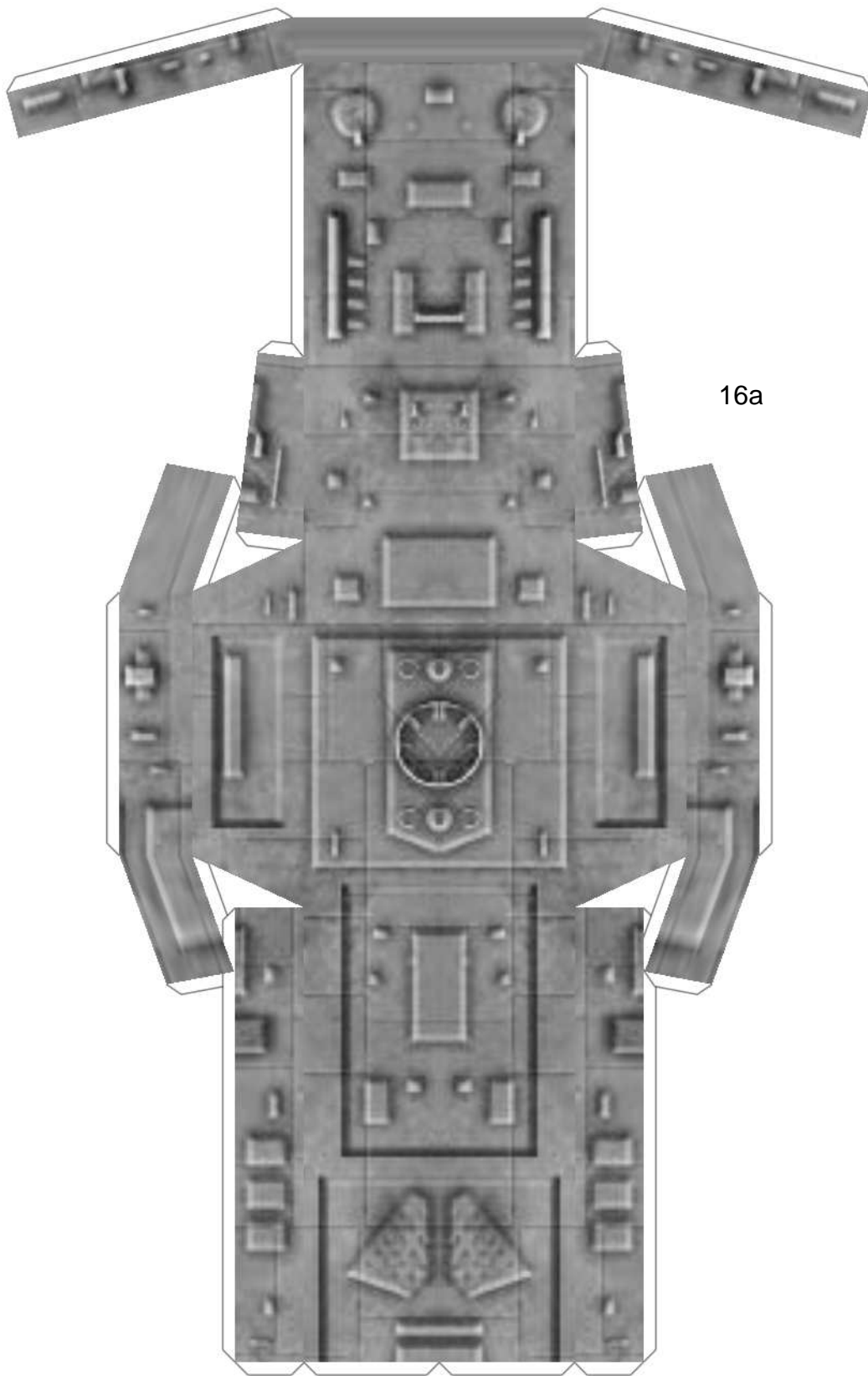
13

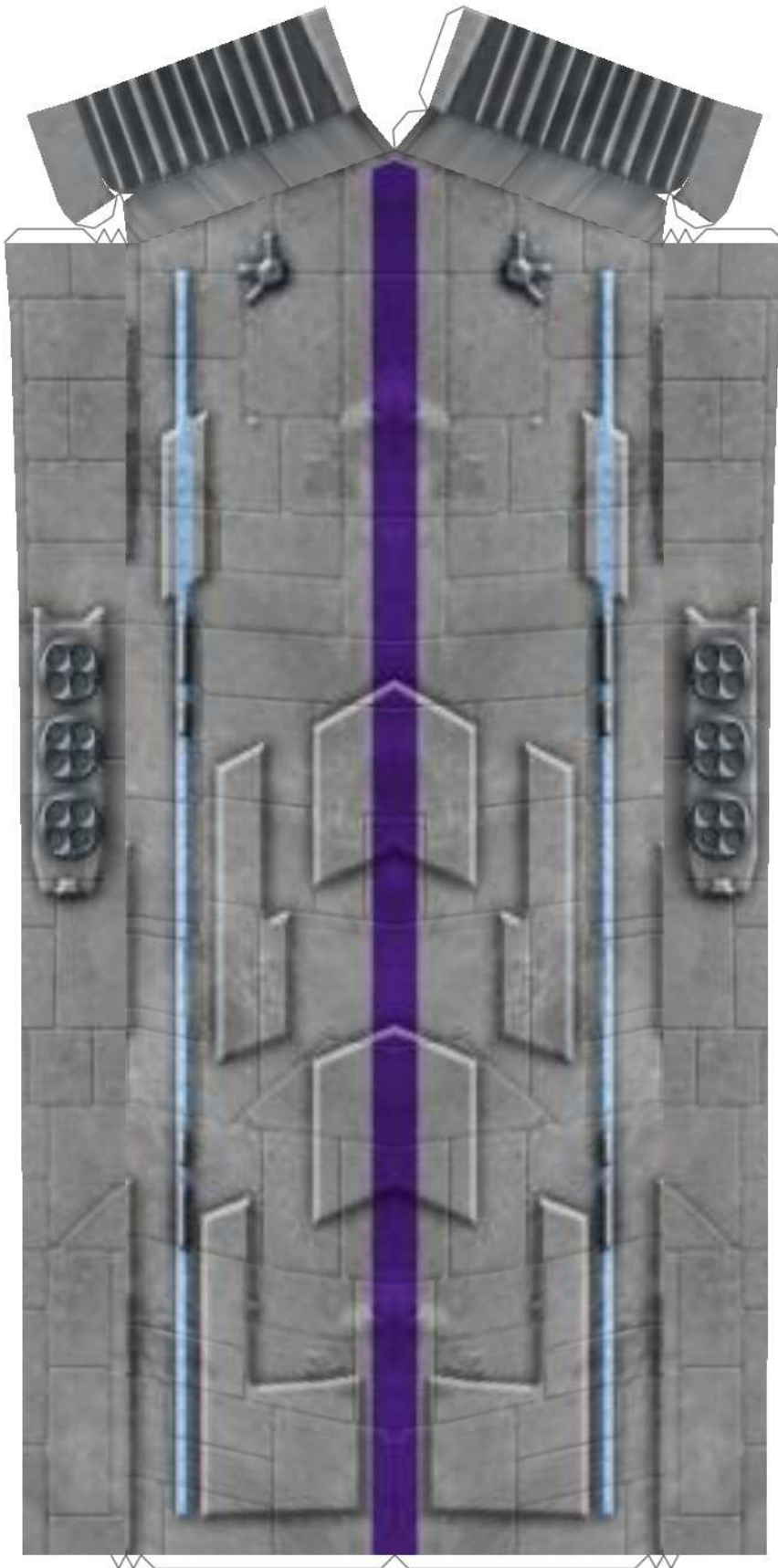


14



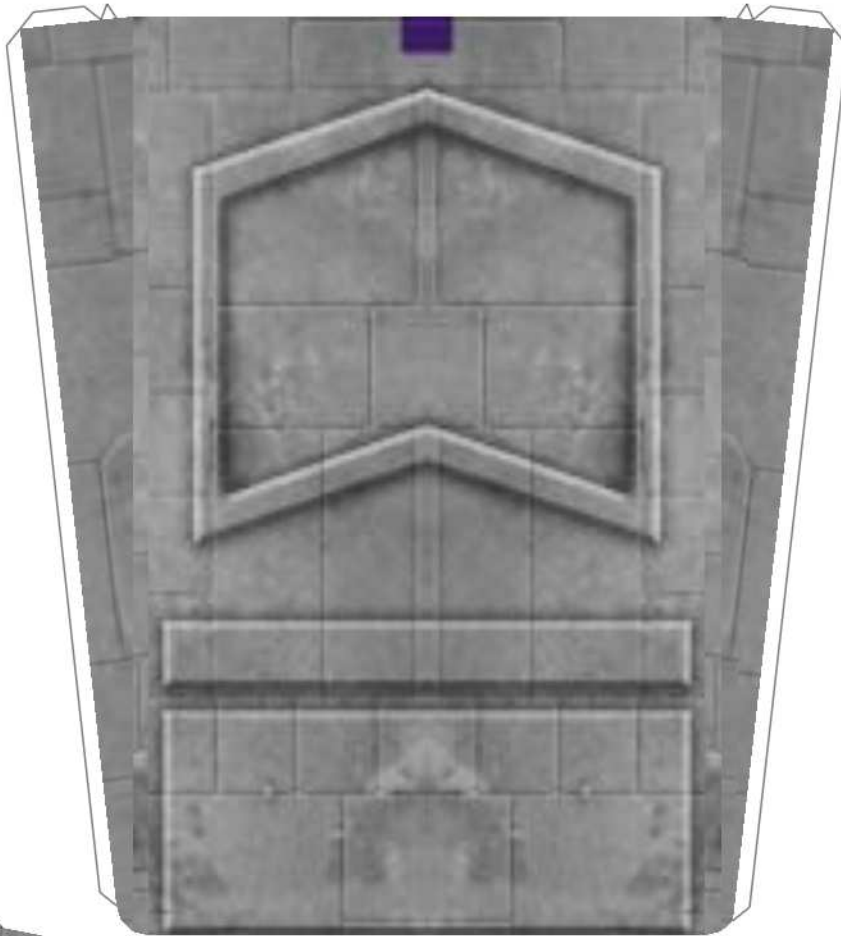
15



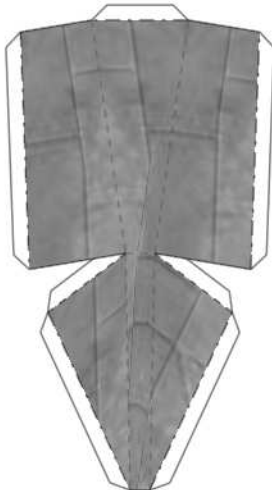


Formers are provided for this part to add support if required. They may not be necessary.

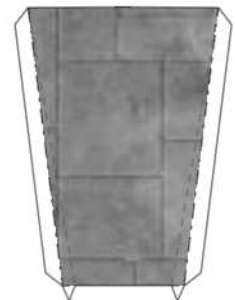
17



18



44a

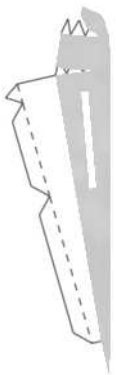


44b

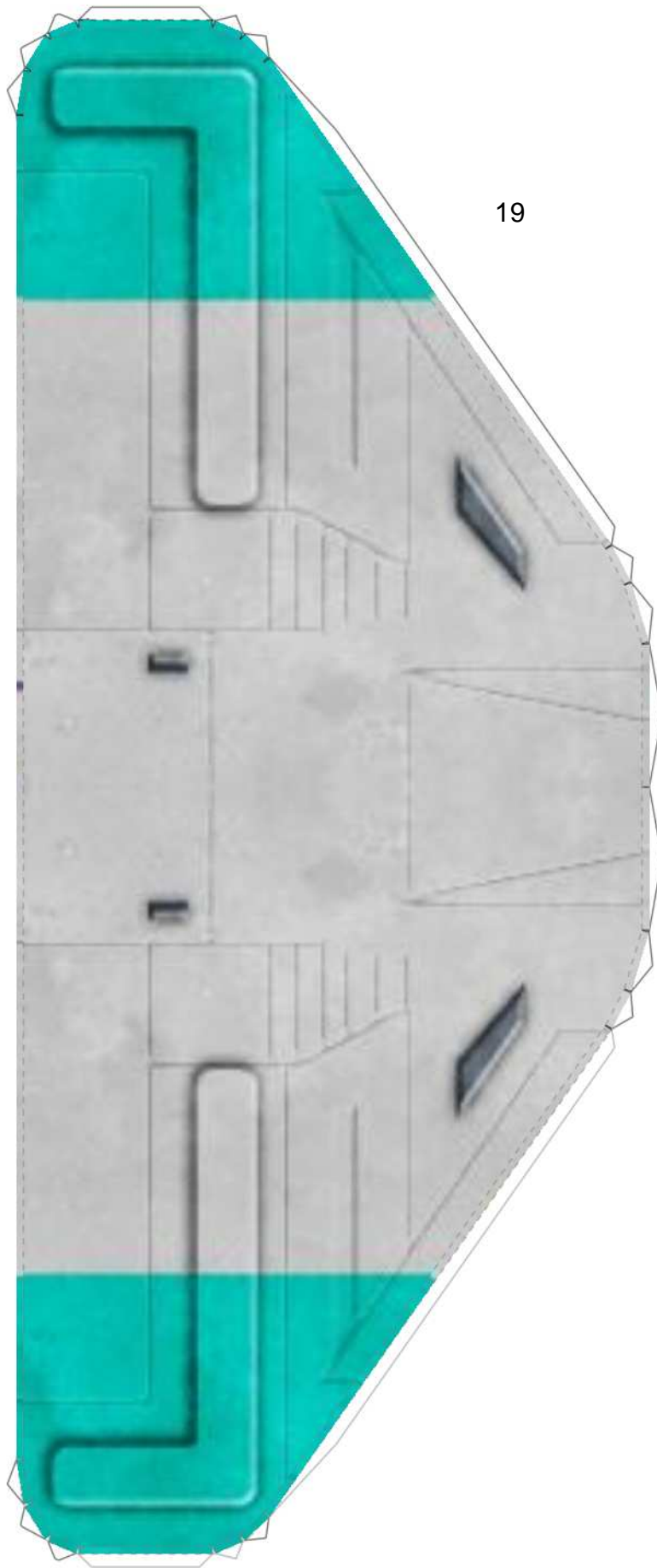
20a



20b



19



Upper tail surface. Laminate to heavier card until thickness about matches the overlapping edges on the lower surface (19)

21



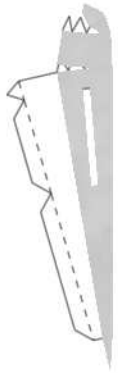
22a



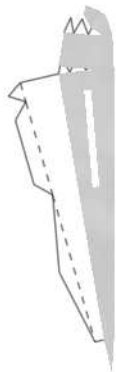
22b



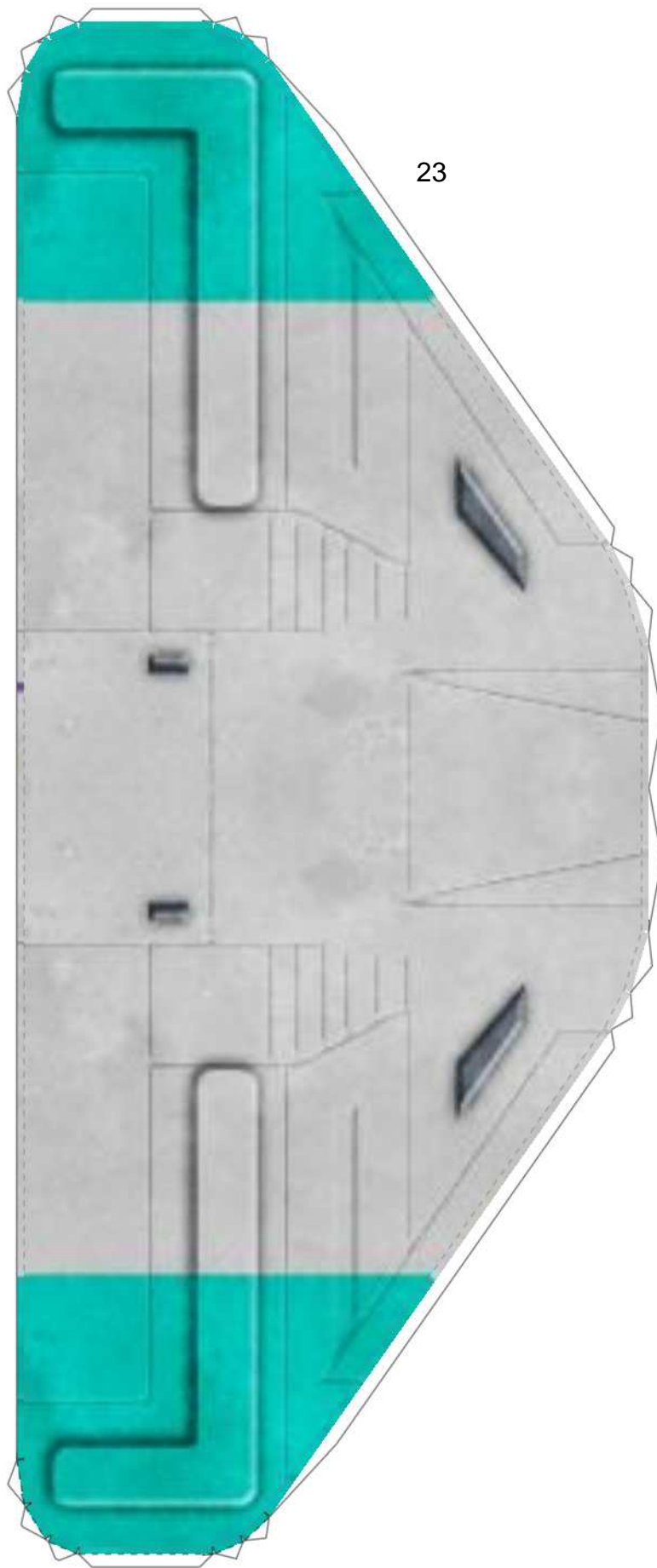
24a



24b



23



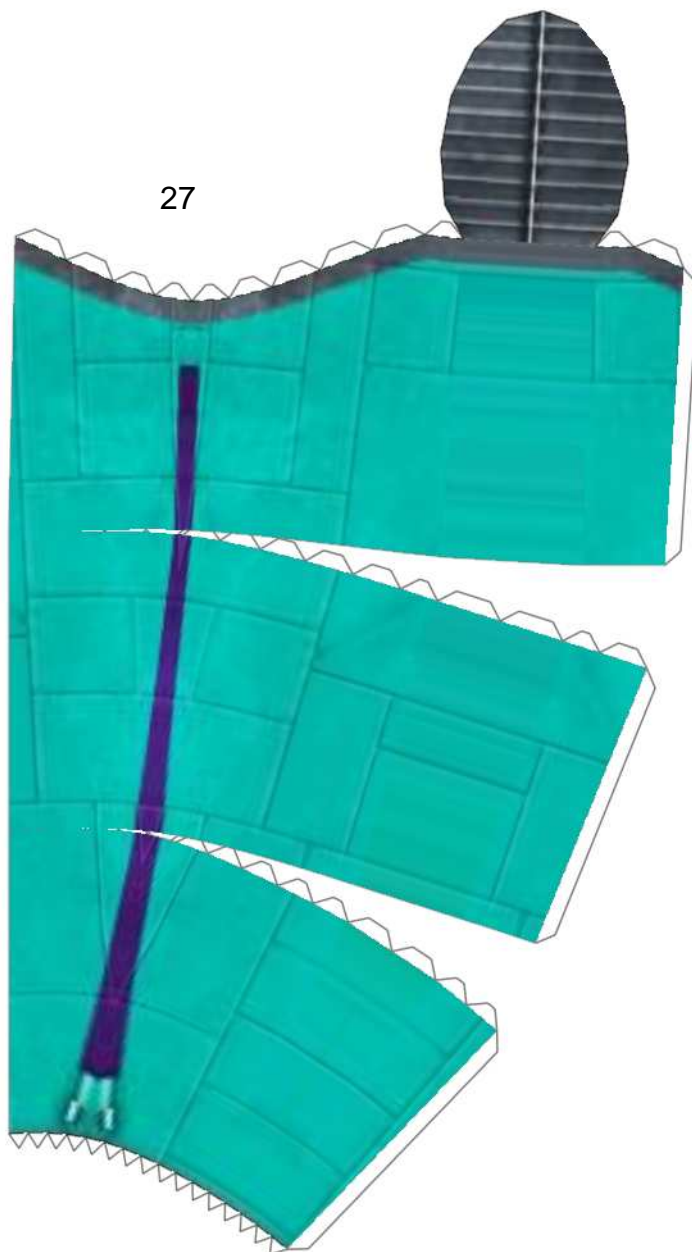
Upper tail surface. Laminate to heavier card until thickness about matches the overlapping edges on the lower surface (23).

25

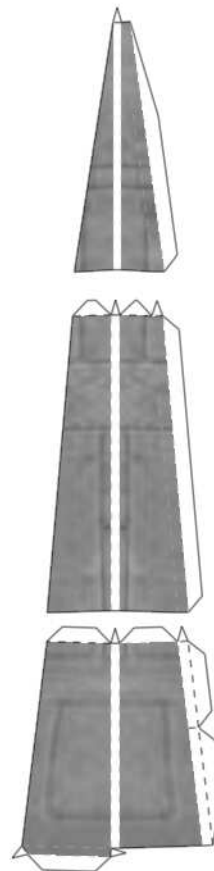
26a

26b

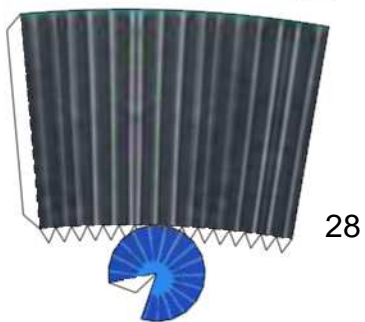




27

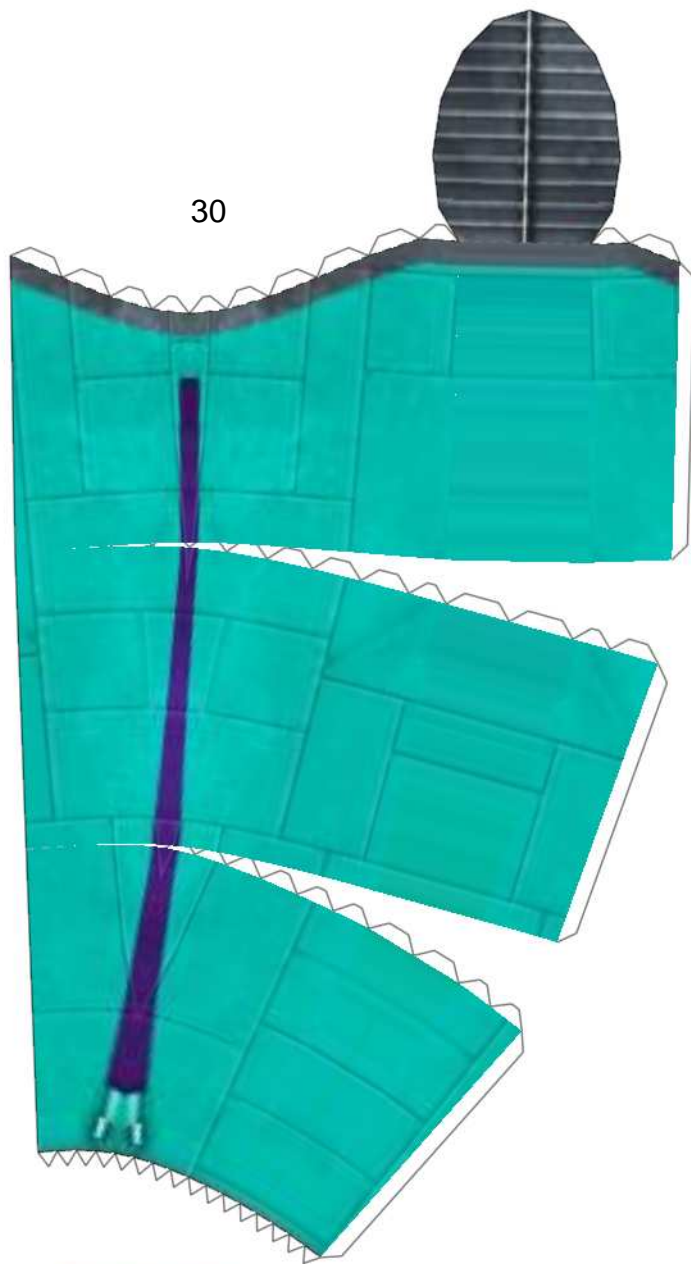


29

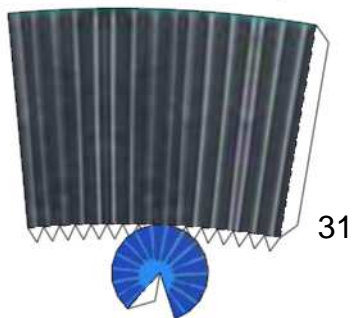


28

Left Engine and mount

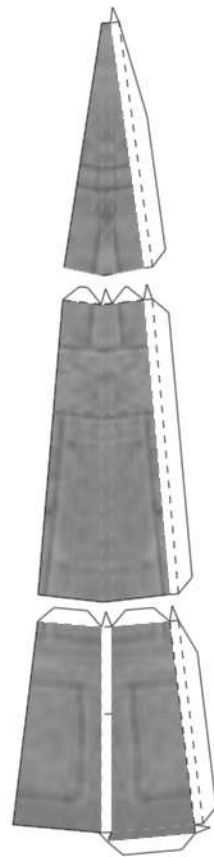


30

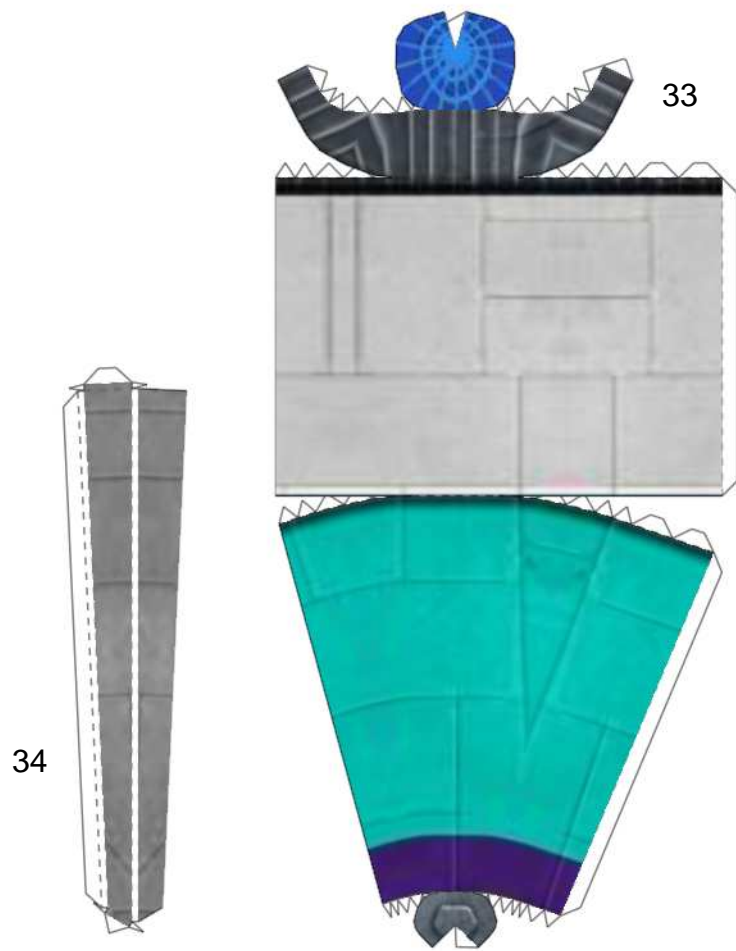


31

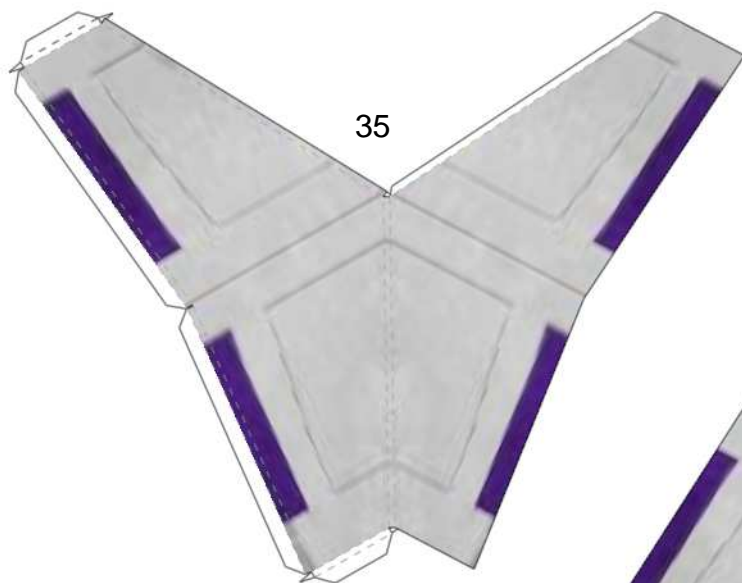
Right Engine and mount



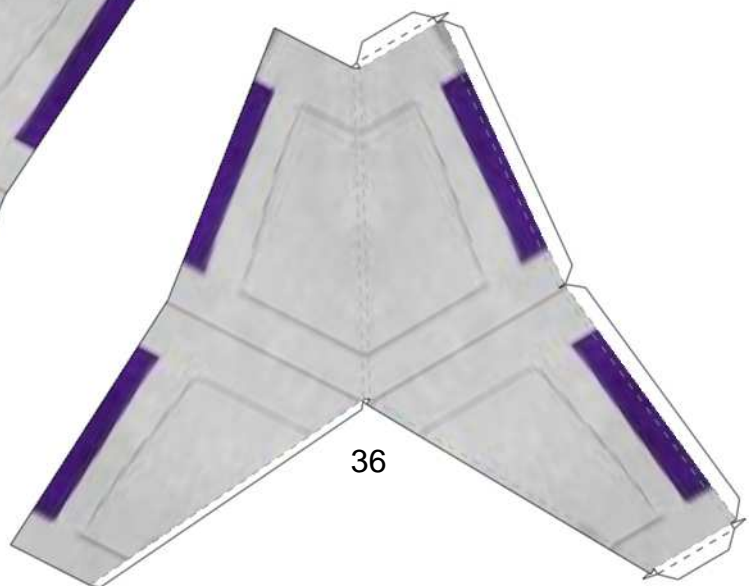
32

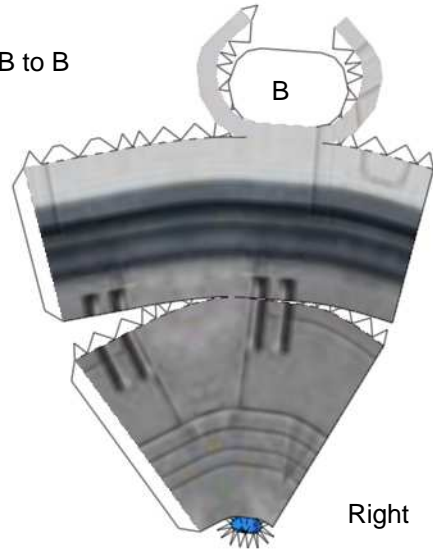
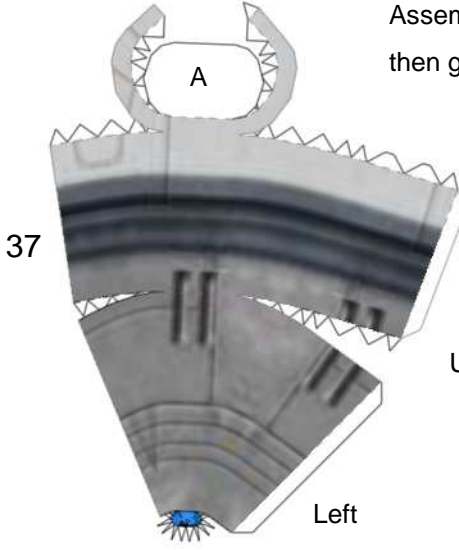
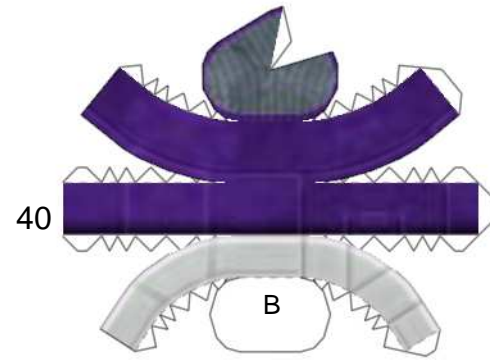
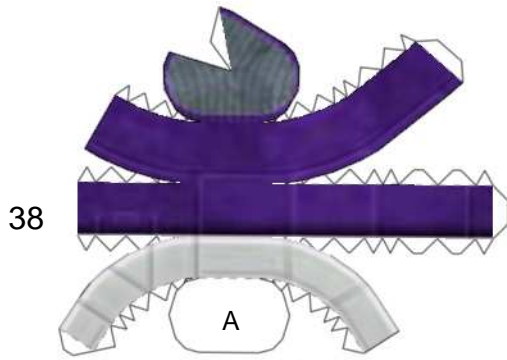


Upper Engine and mount



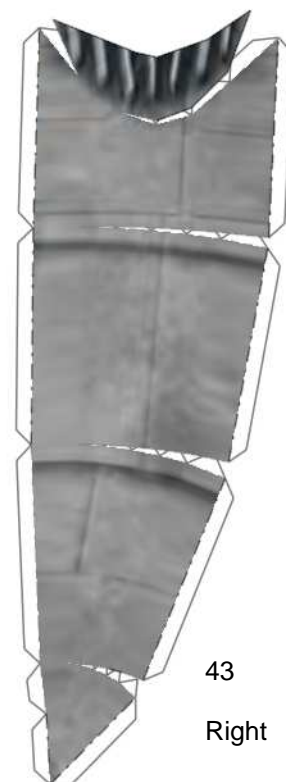
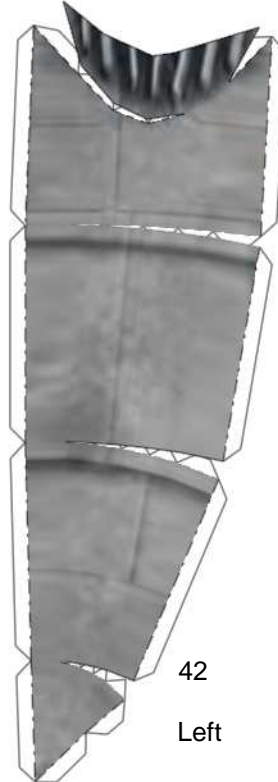
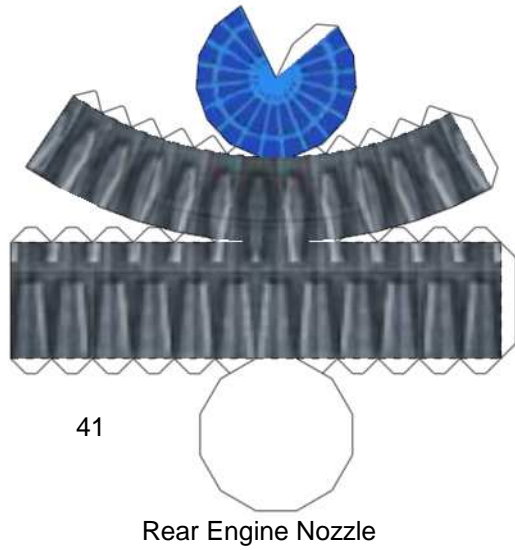
35 and 36 are the vertical tail stabilizers.
Glue additional layers of card inside to make them solid (for strength).





Assemble the pieces,
then glue A to A, and B to B

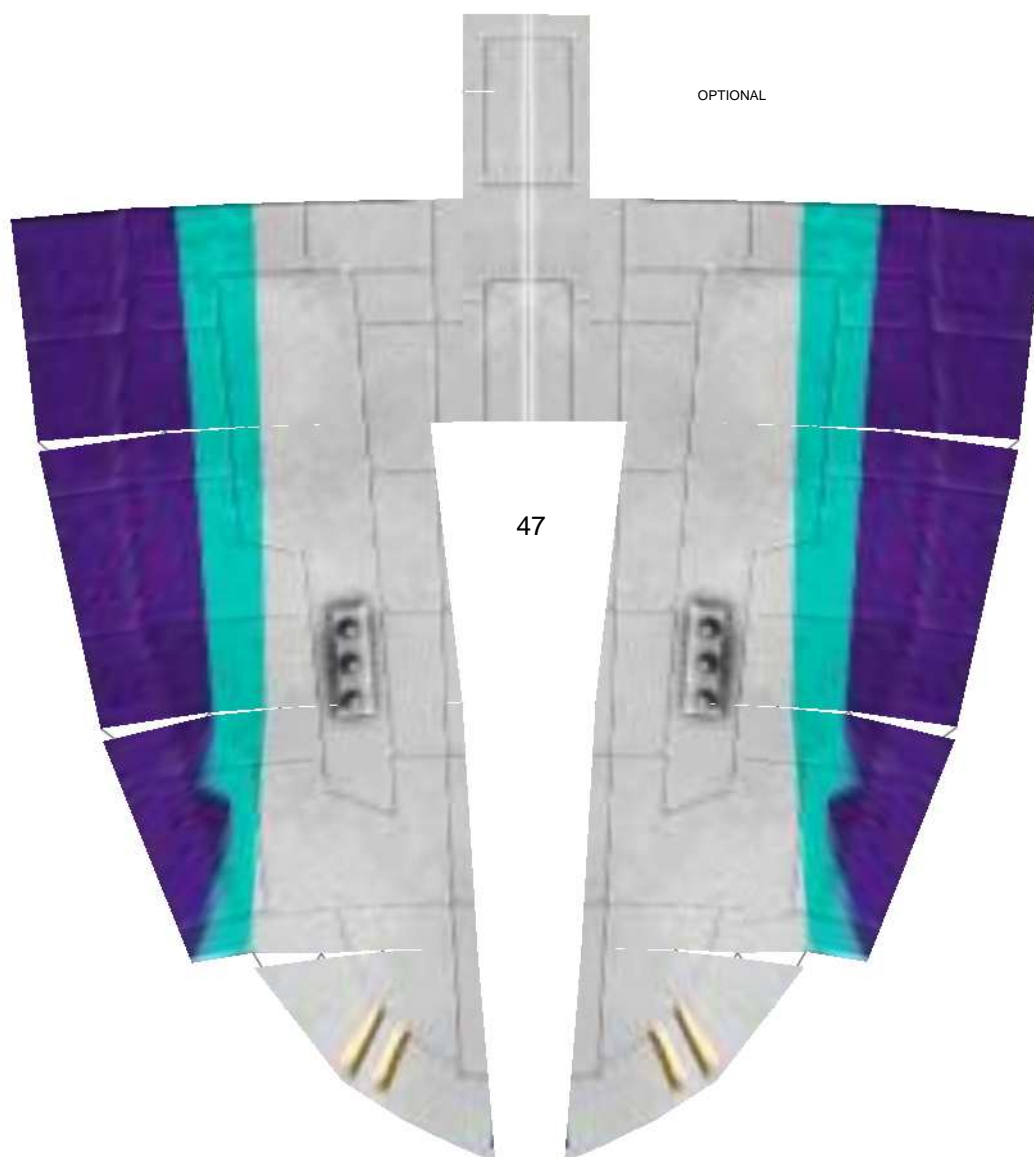
Upper Engines



Left

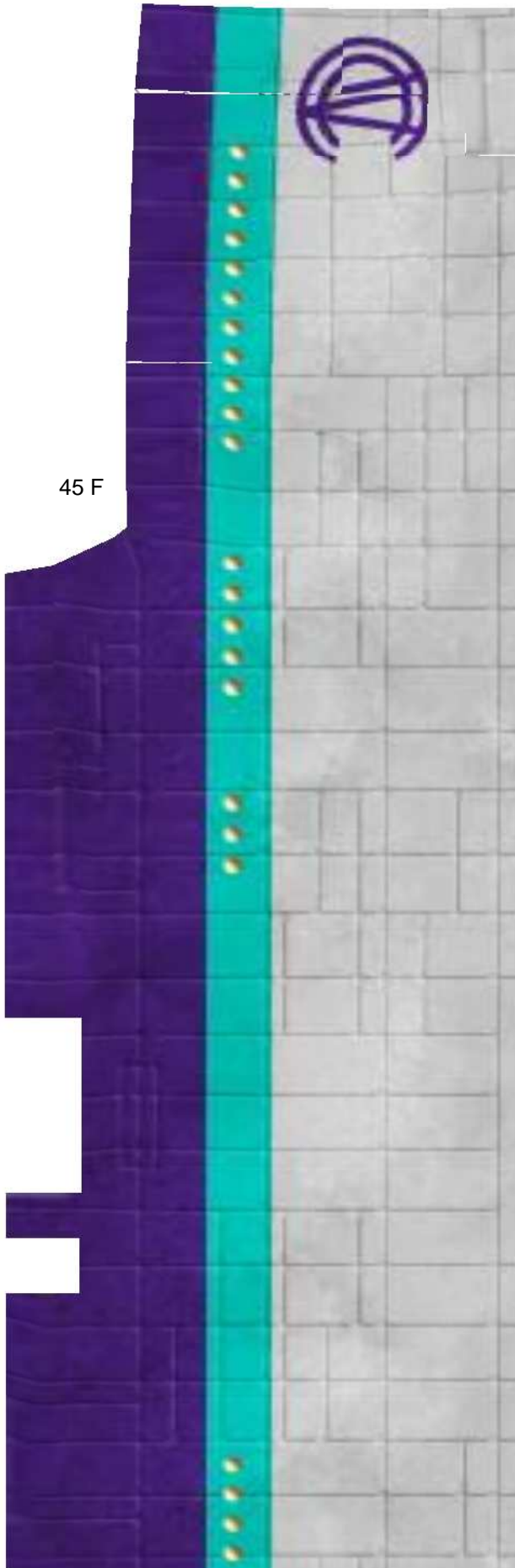
Right

Auxillary Engines



Parts 45 F, 45 R, 46 F, 46 R, and 47 are optional hull overlay pieces.

If you use them, use part 44a for the nose, otherwise use part 44b.



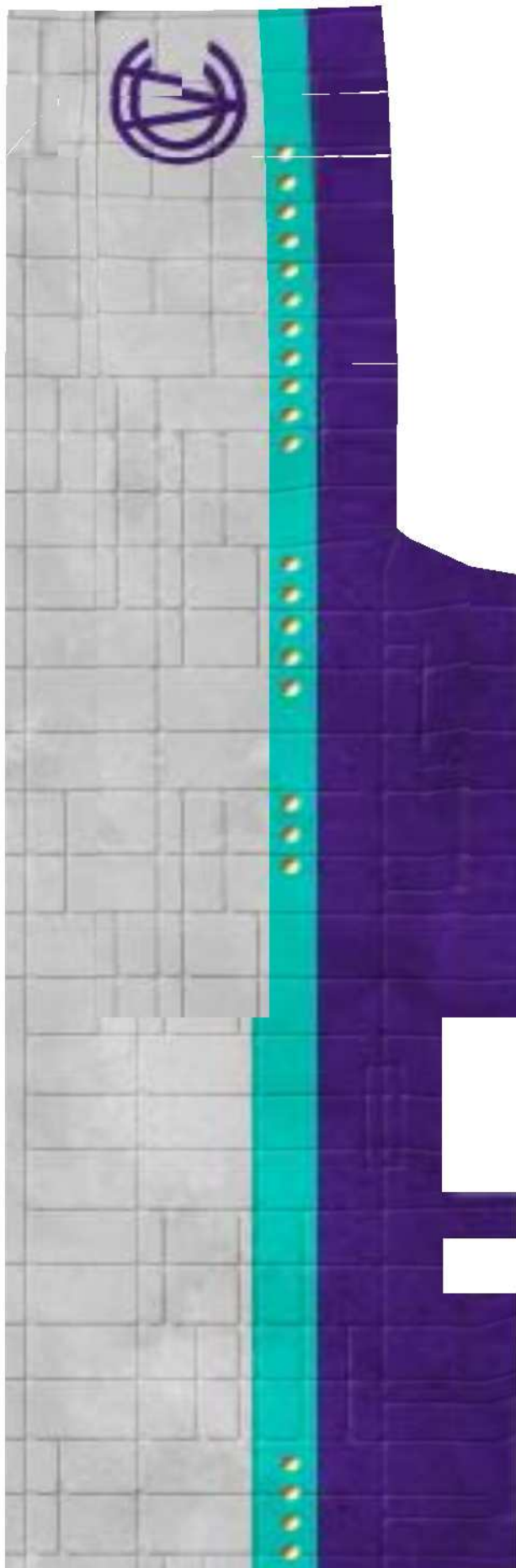
45 F



OPTIONAL PIECES

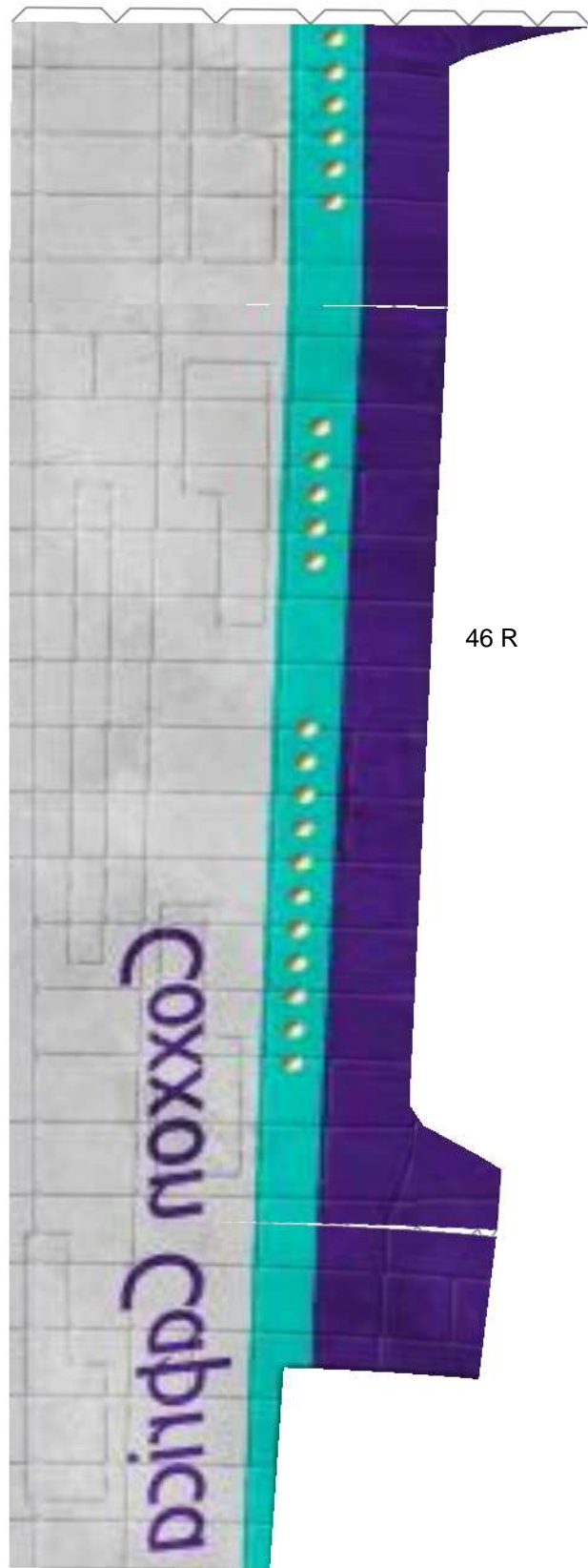
45 R

46 F

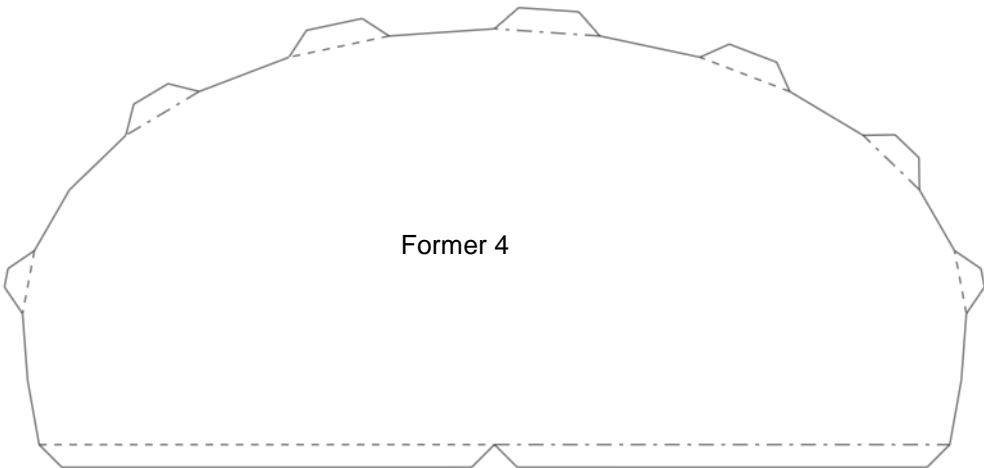
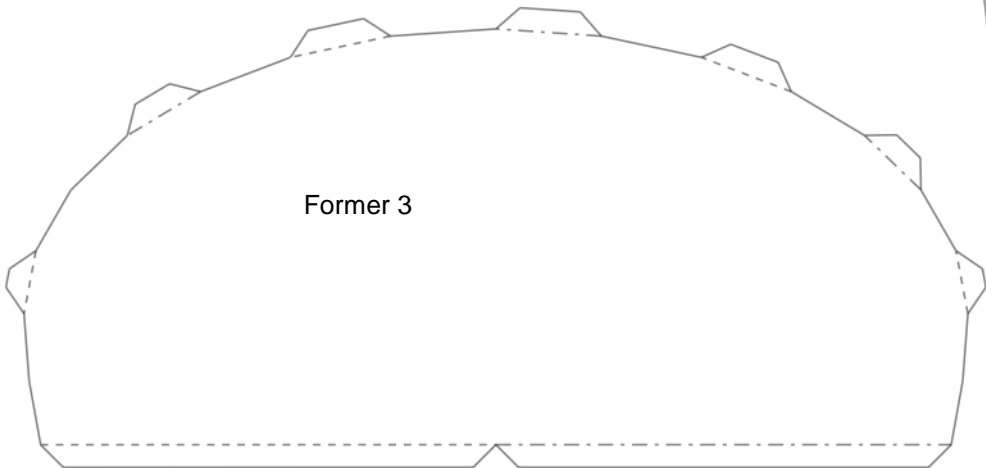
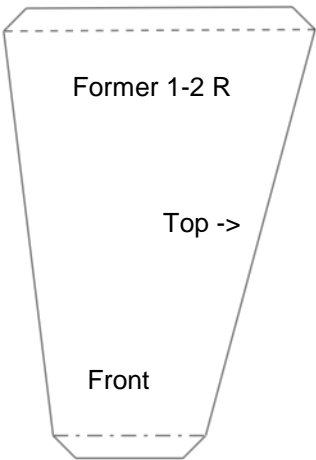
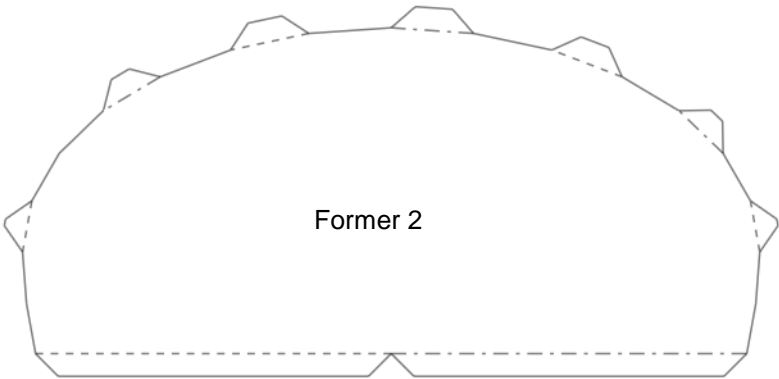
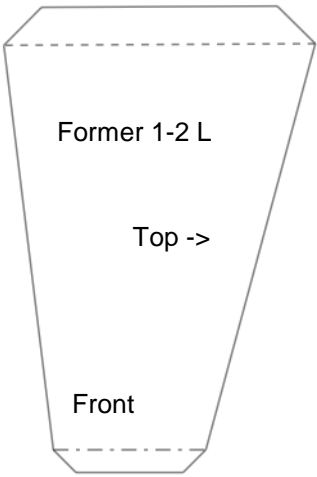
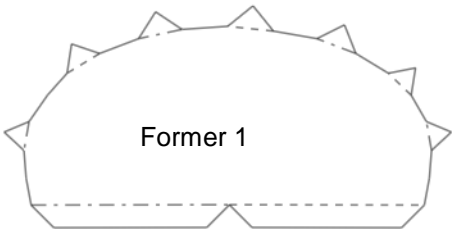


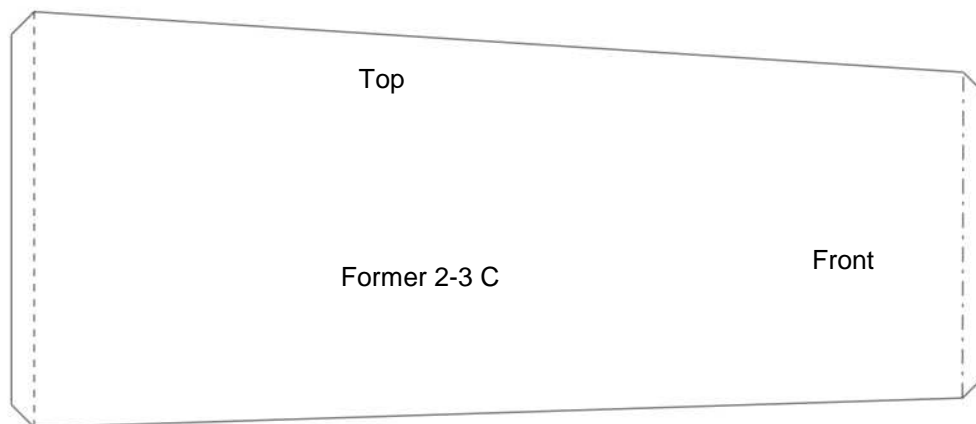
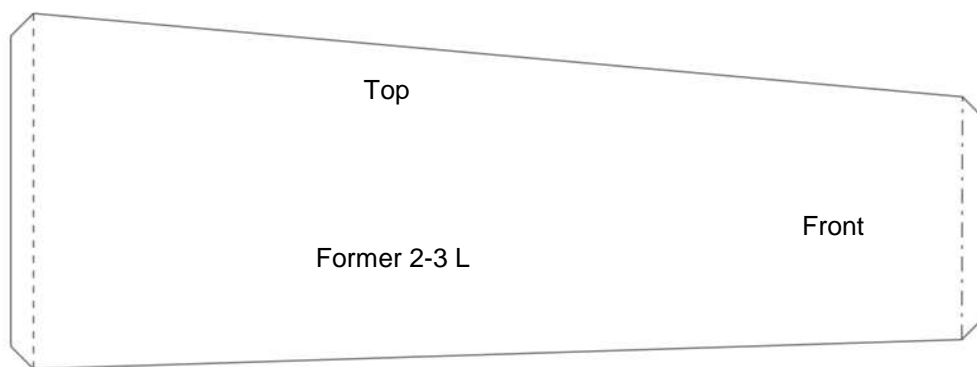
OPTIONAL PIECES

46 R



Laminate all formers to heavier card for strength

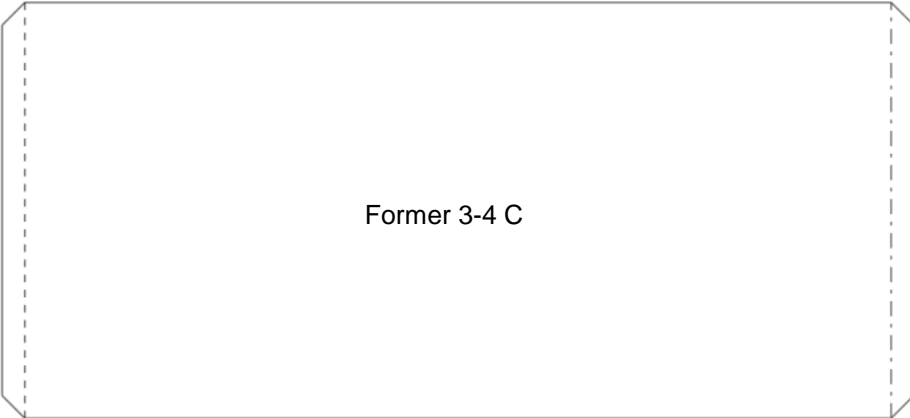




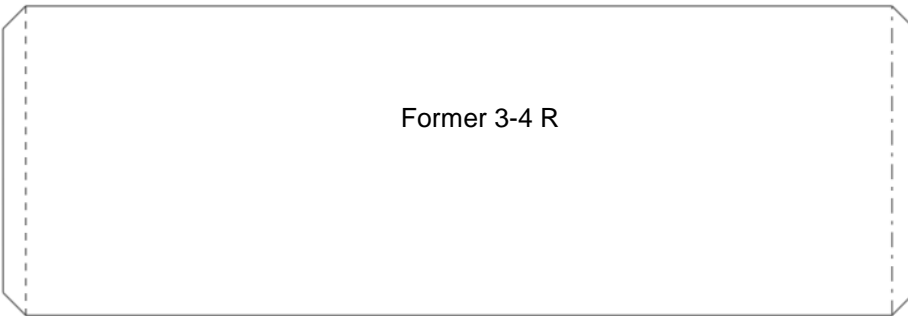
Laminate all formers to heavier card for strength



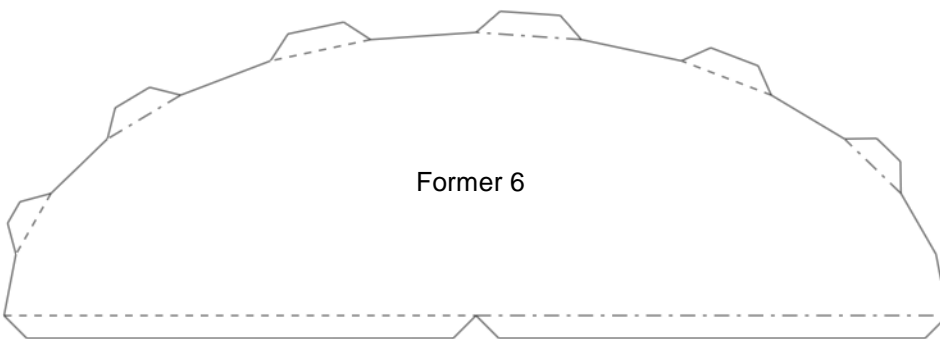
Former 3-4 L



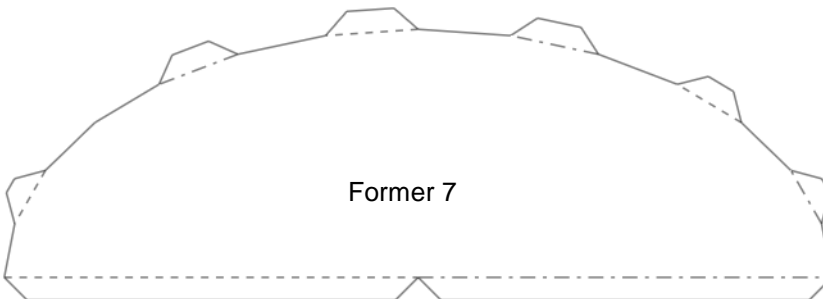
Former 3-4 C



Former 3-4 R

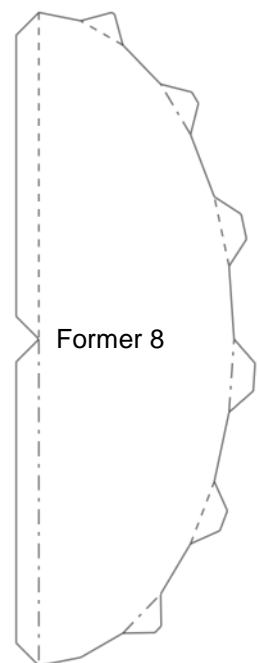


Former 6

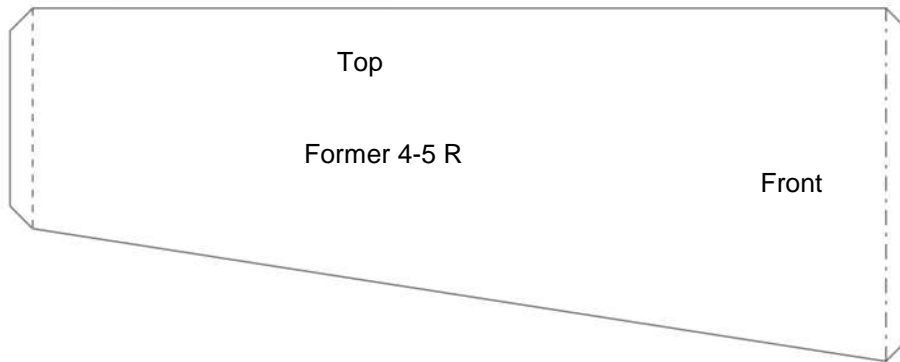
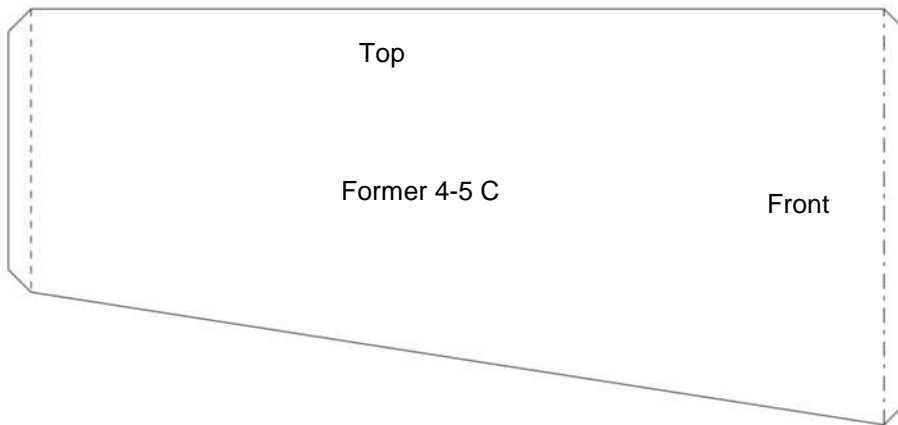
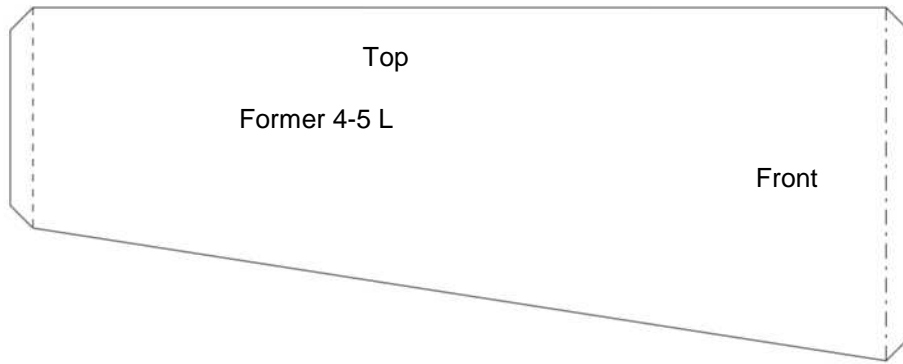


Former 7

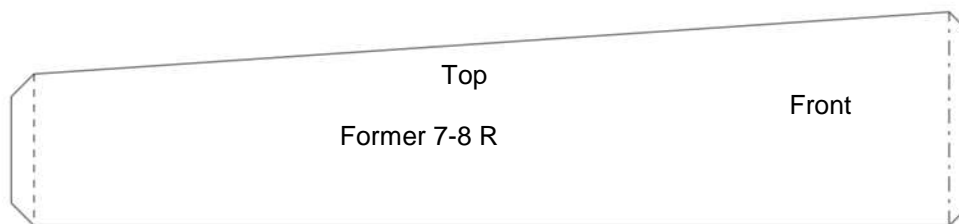
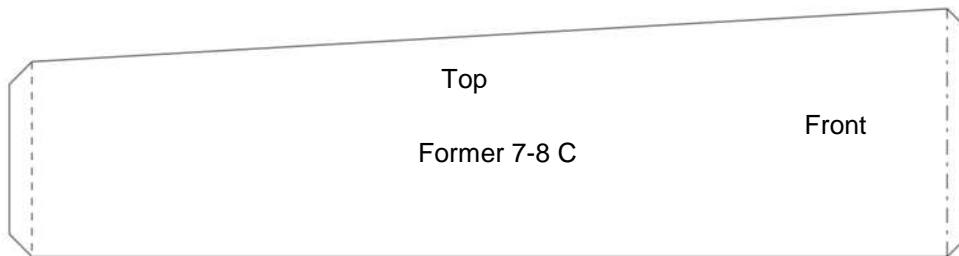
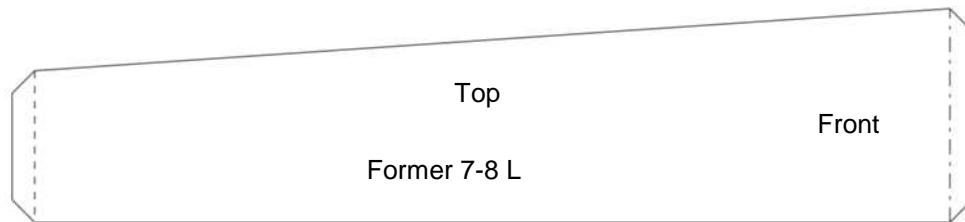
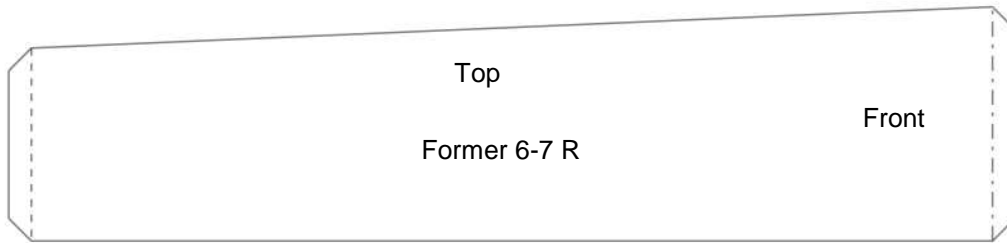
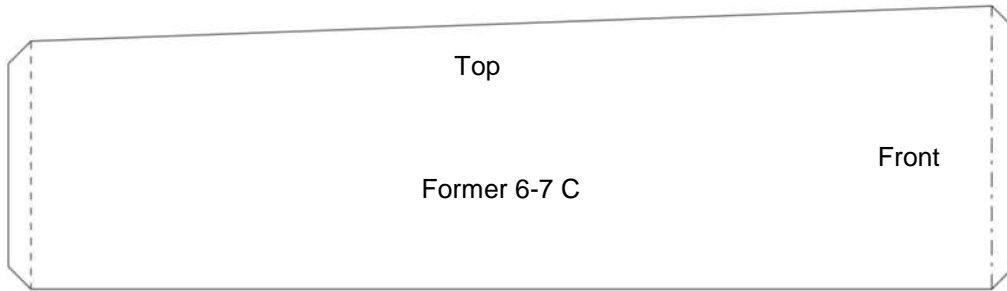
Laminate all formers to heavier card for strength



Former 8

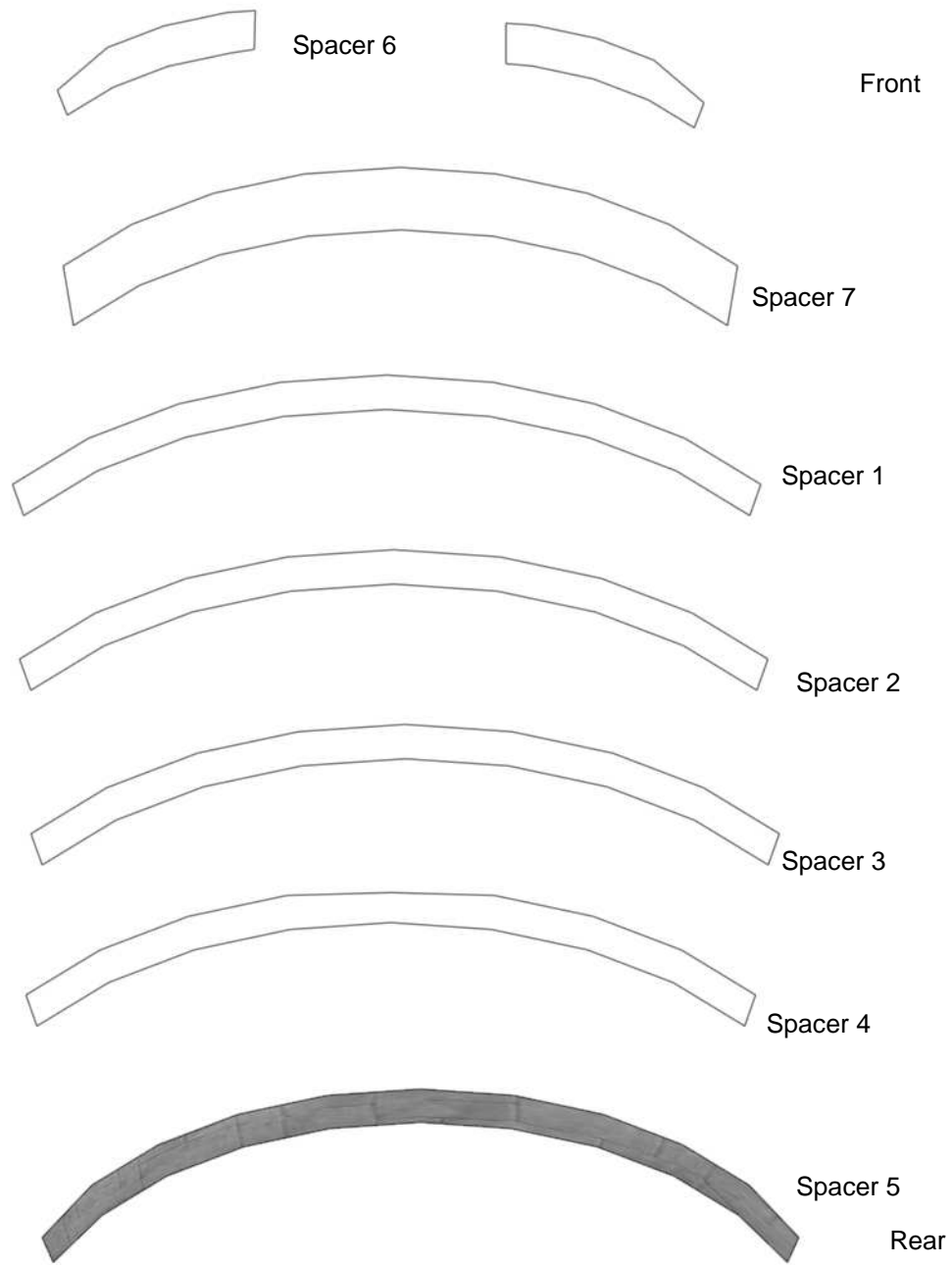


Laminate all formers to heavier card for strength



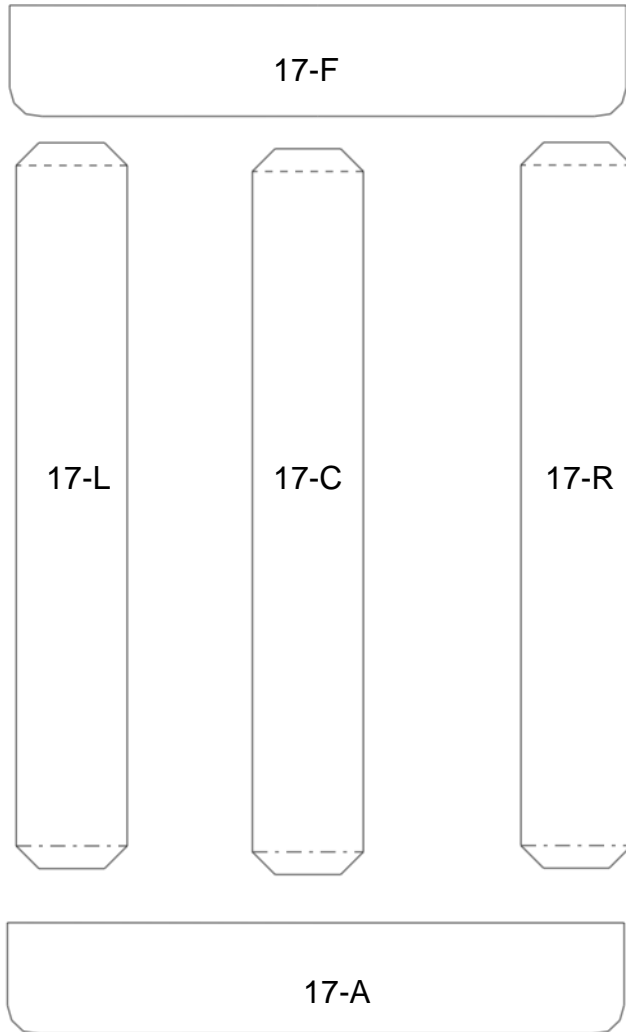
Laminate all formers to heavier card for strength

Spacers for mounting of hull overlays

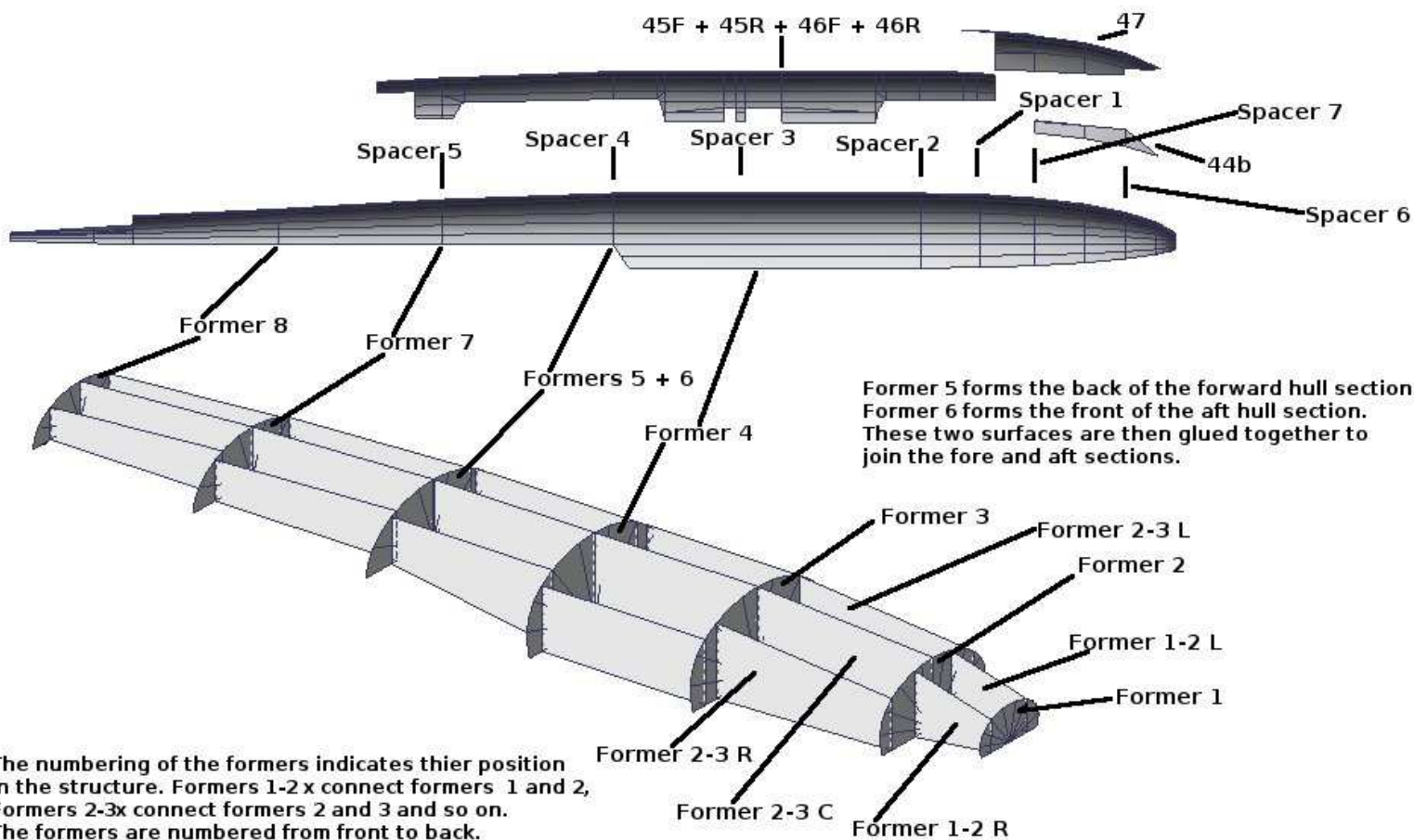
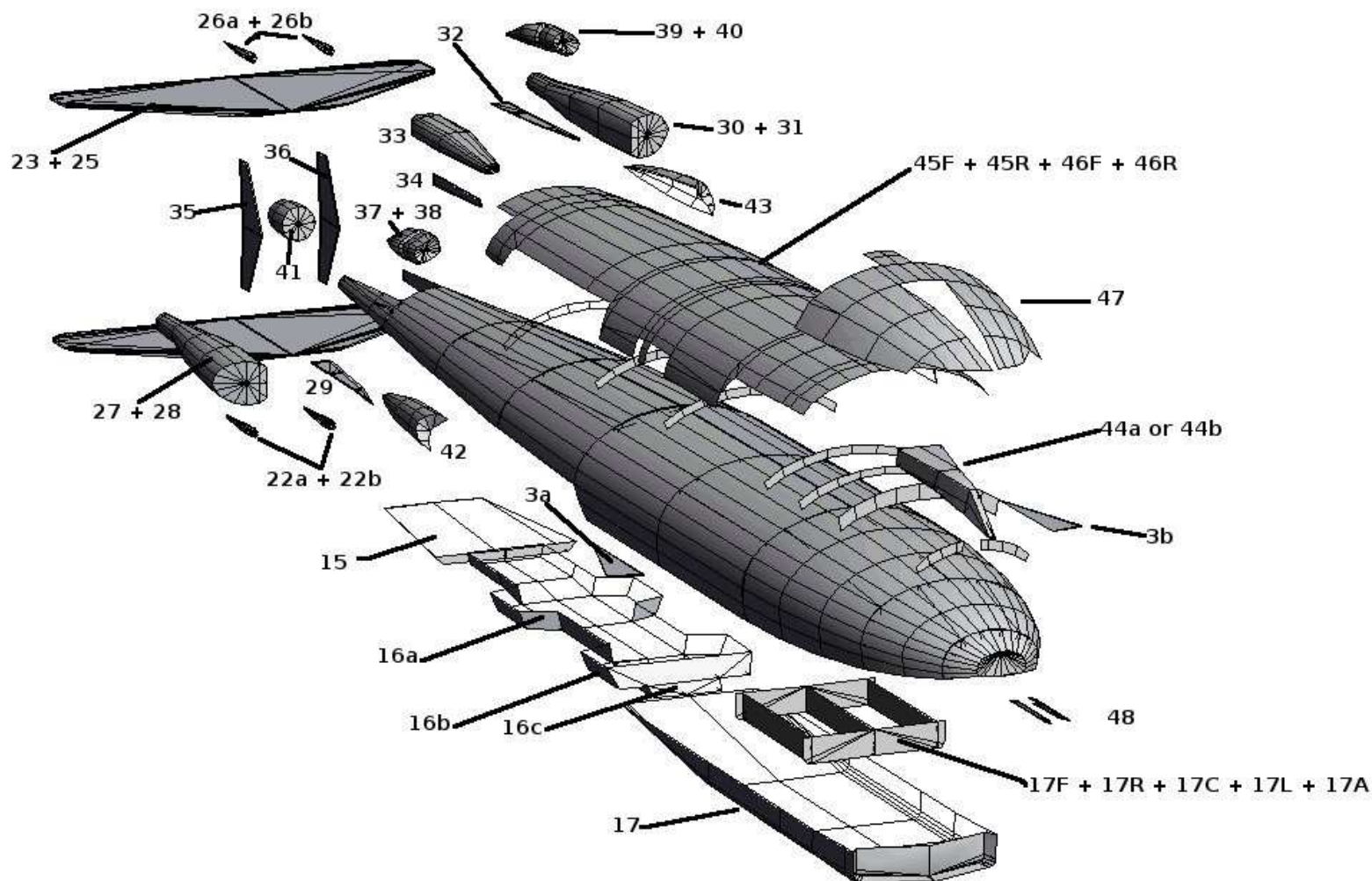


Laminate all spacers to heavier card for strength

Optional formers for lower front hull (#17)



Laminate all formers to heavier card for strength



The numbering of the formers indicates their position in the structure. Formers 1-2 x connect formers 1 and 2, Formers 2-3x connect formers 2 and 3 and so on. The formers are numbered from front to back.