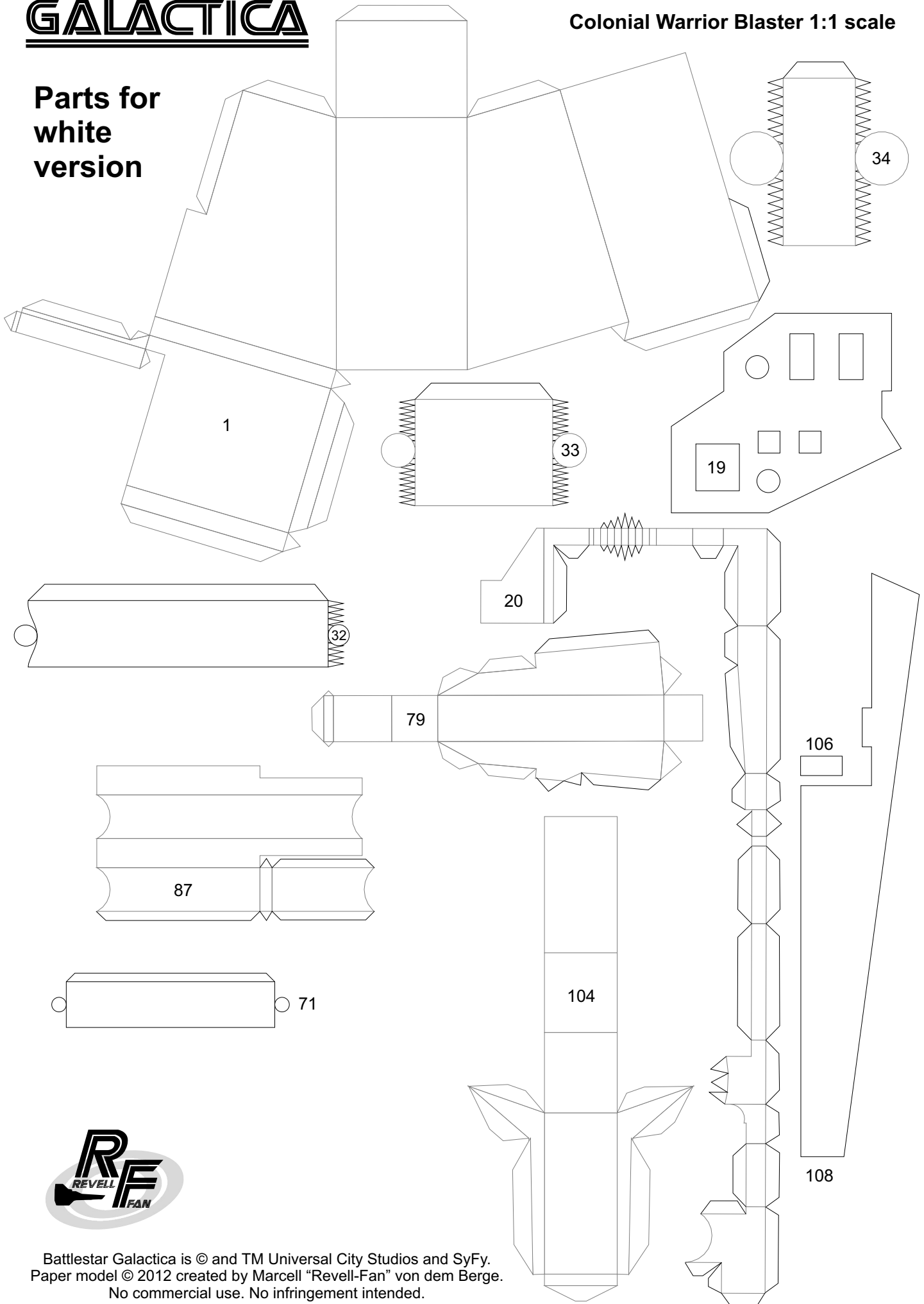
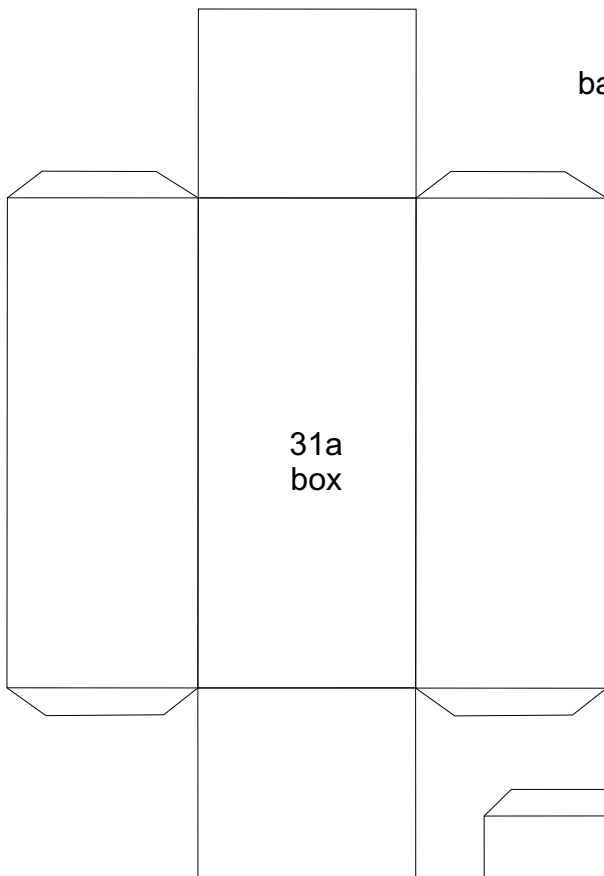
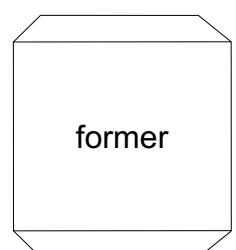
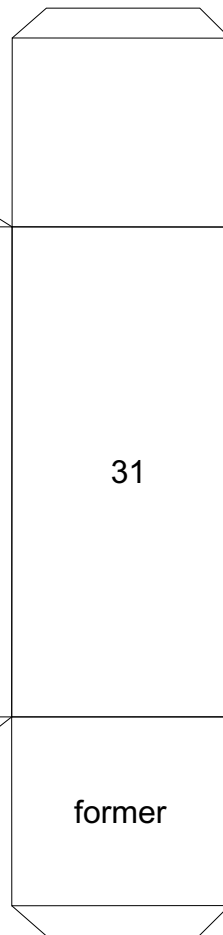
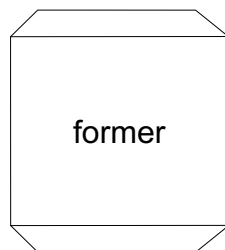
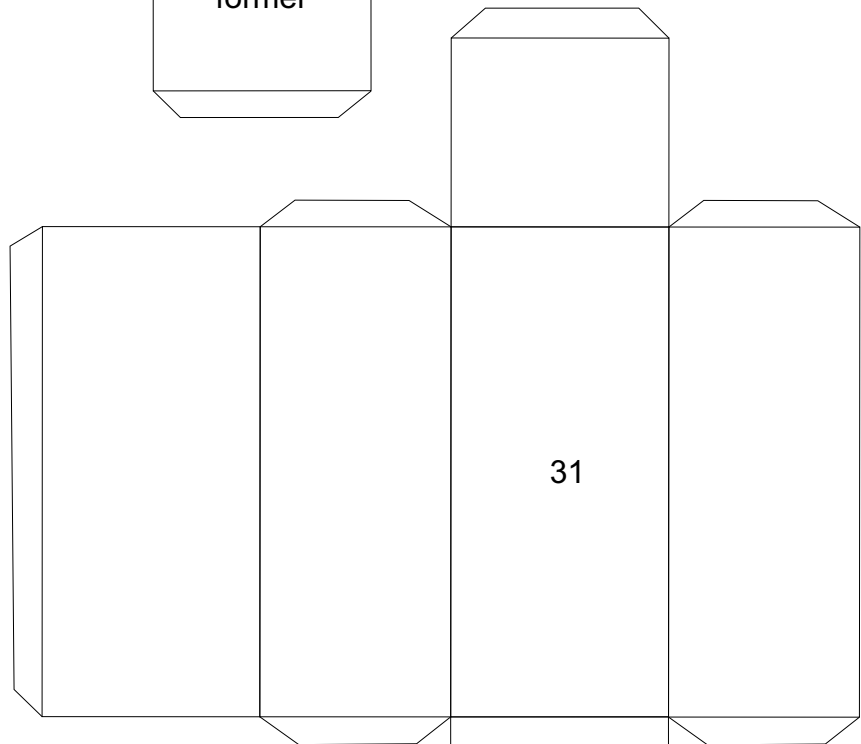
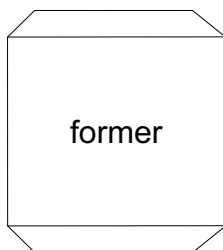
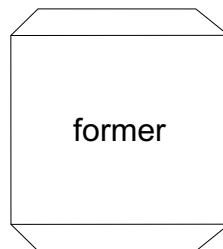
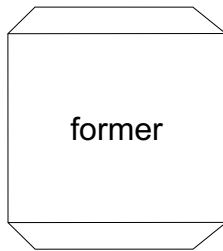
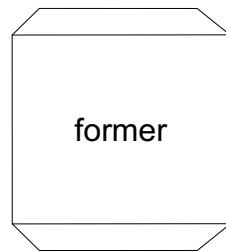
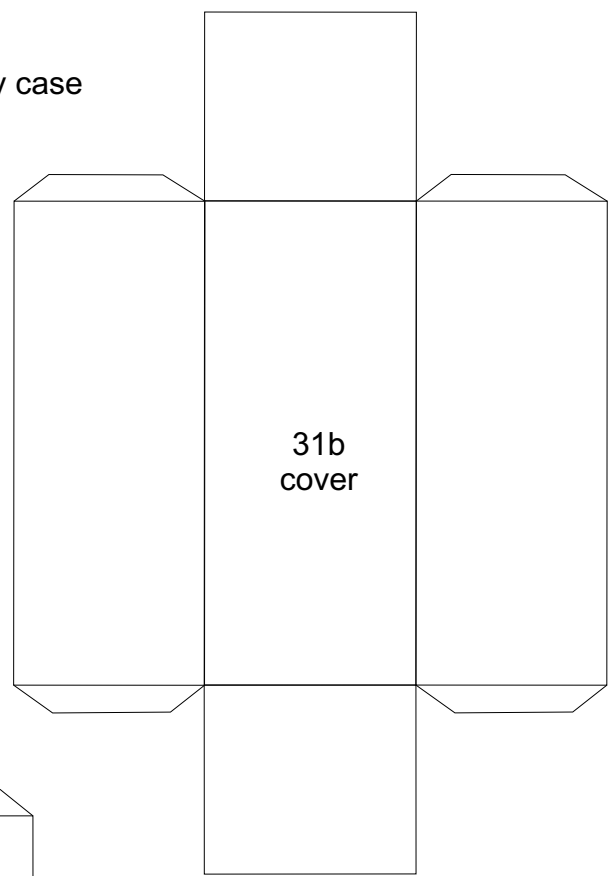


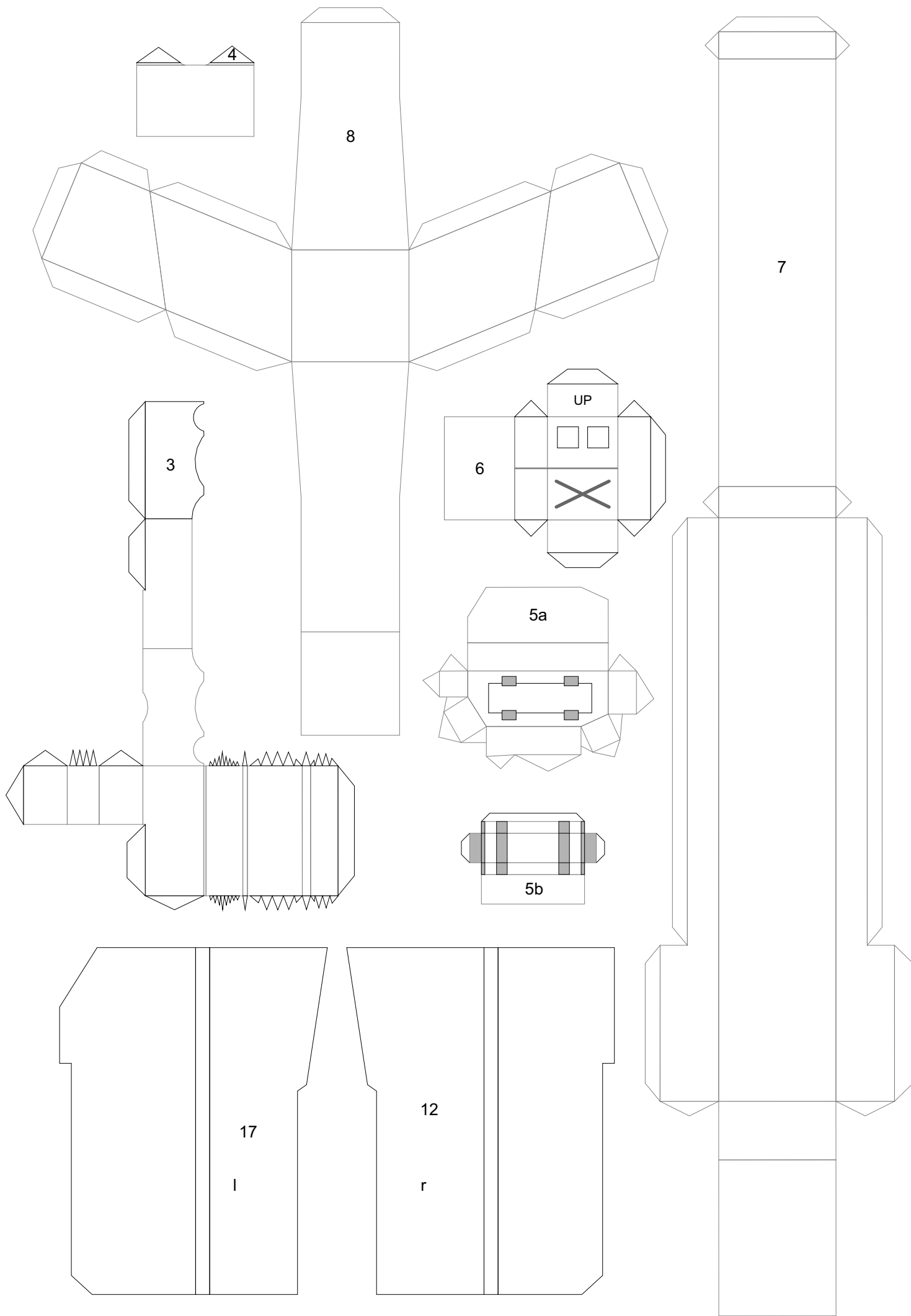
### Parts for white version

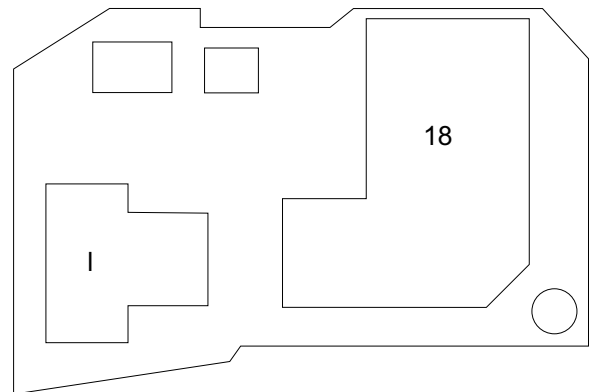
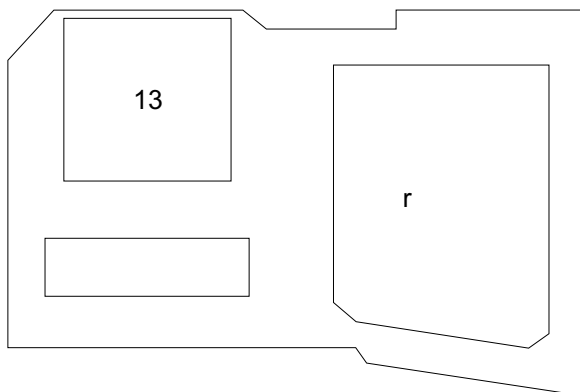
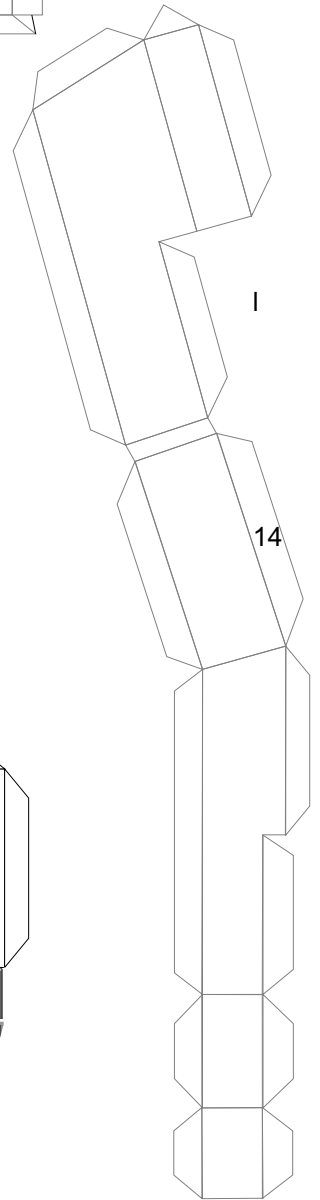
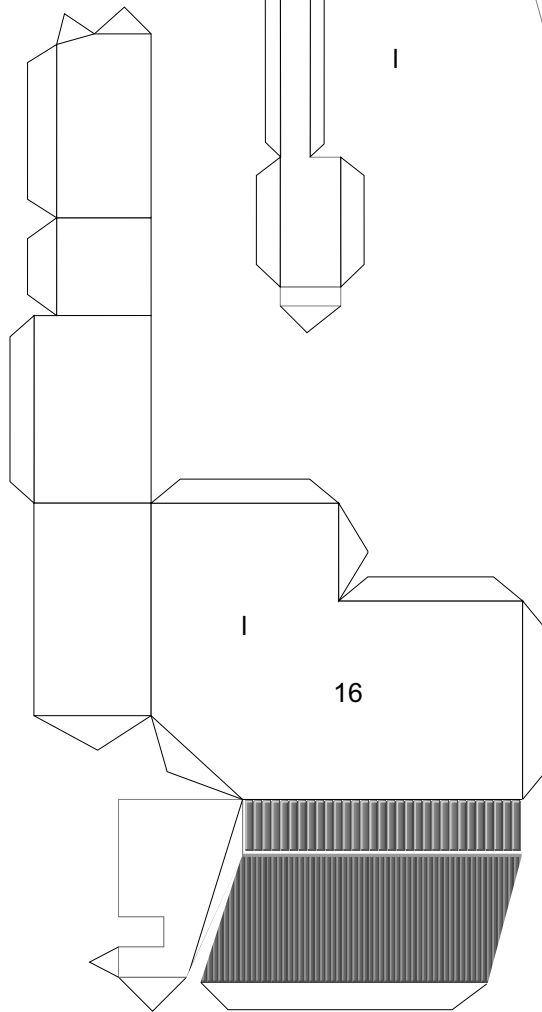
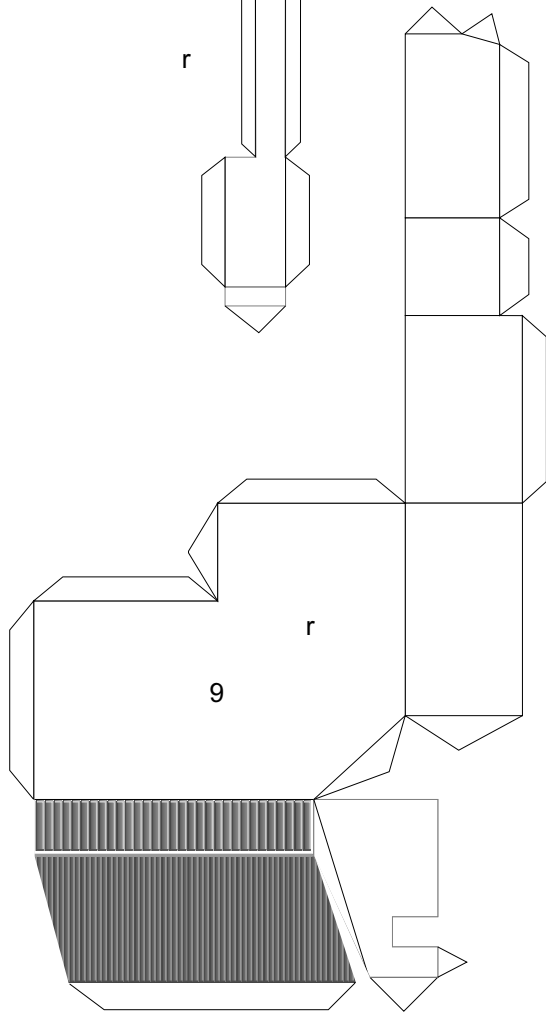
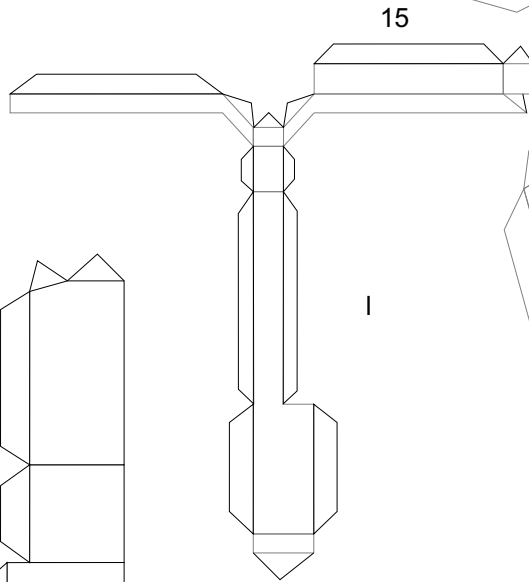
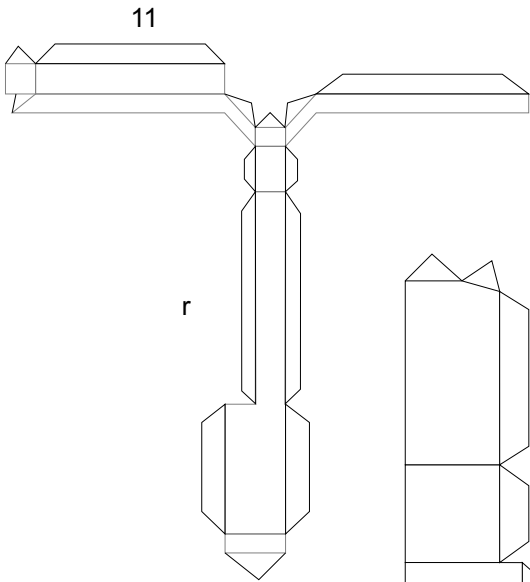
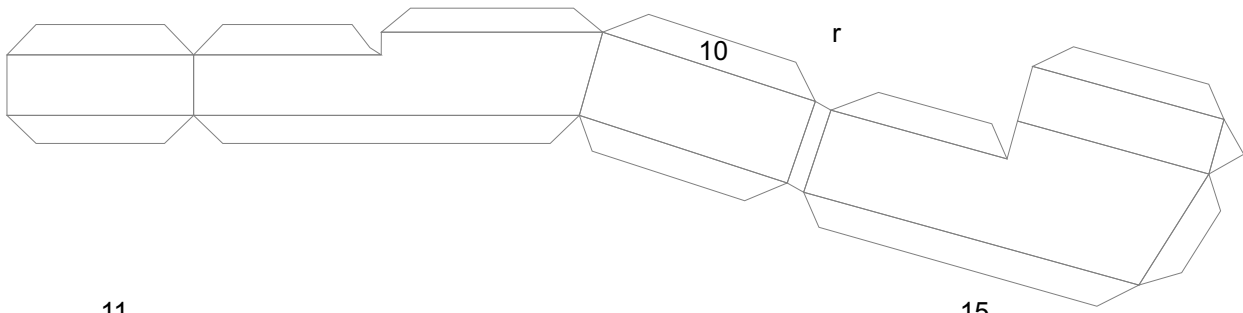


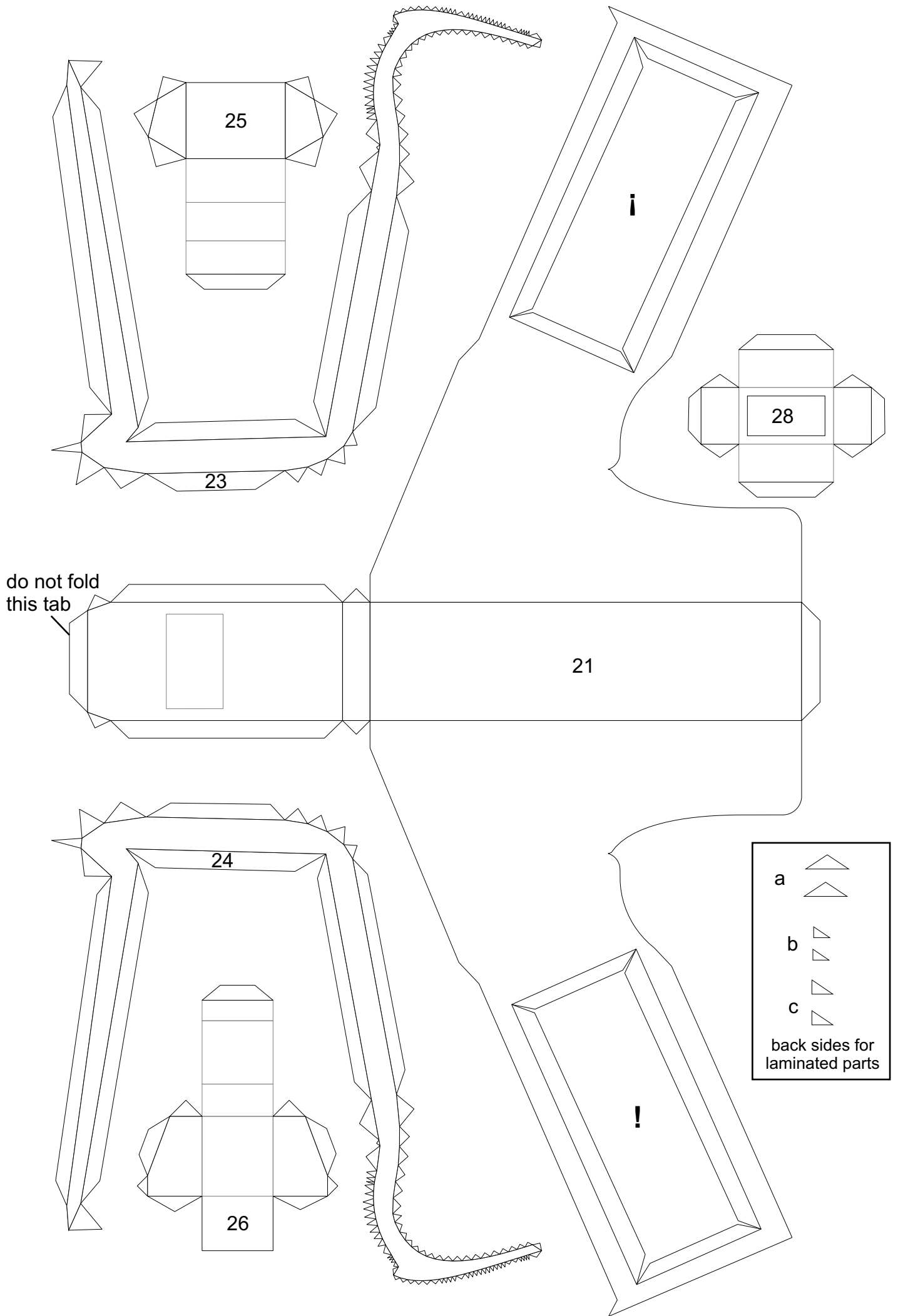


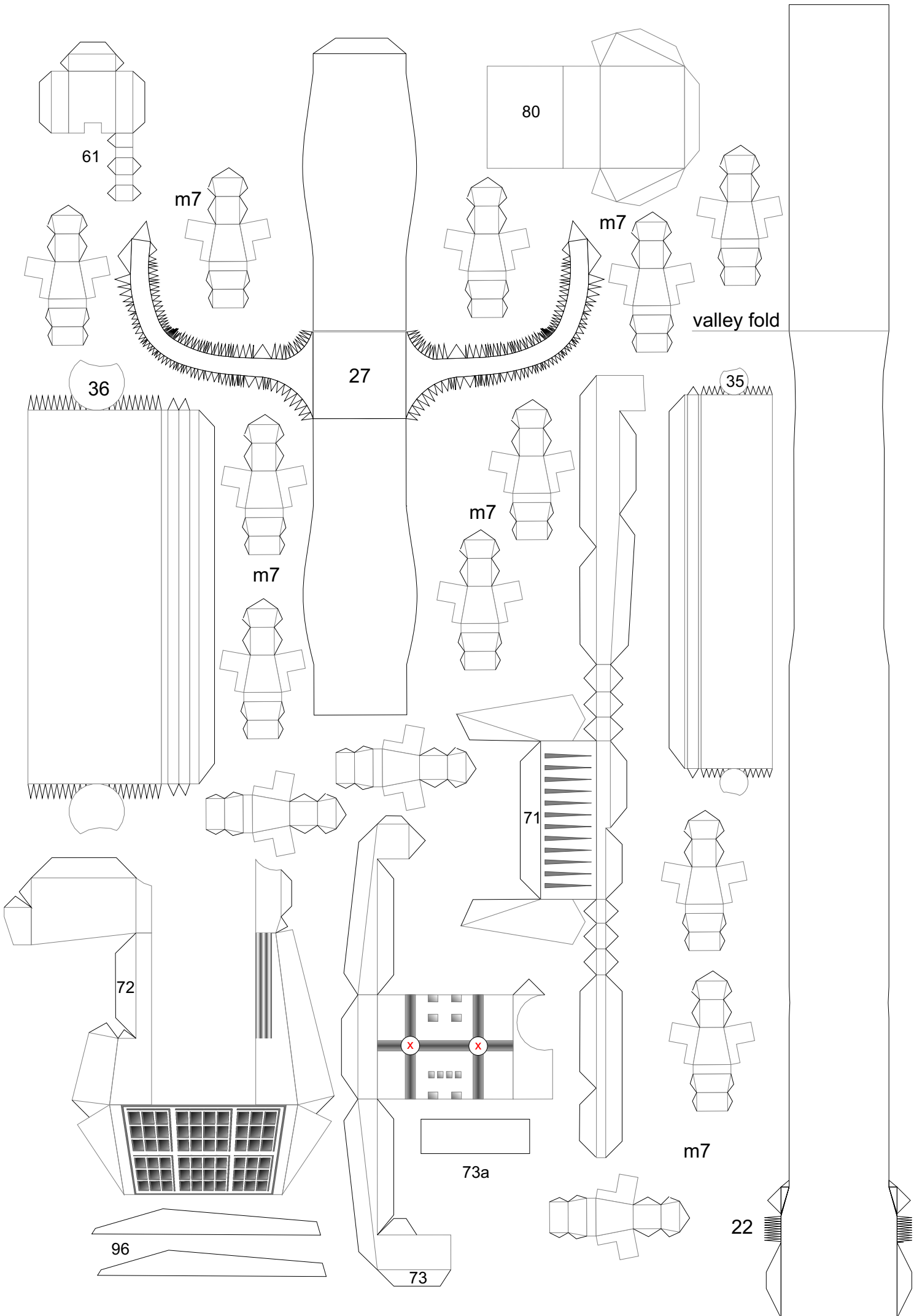
battery case



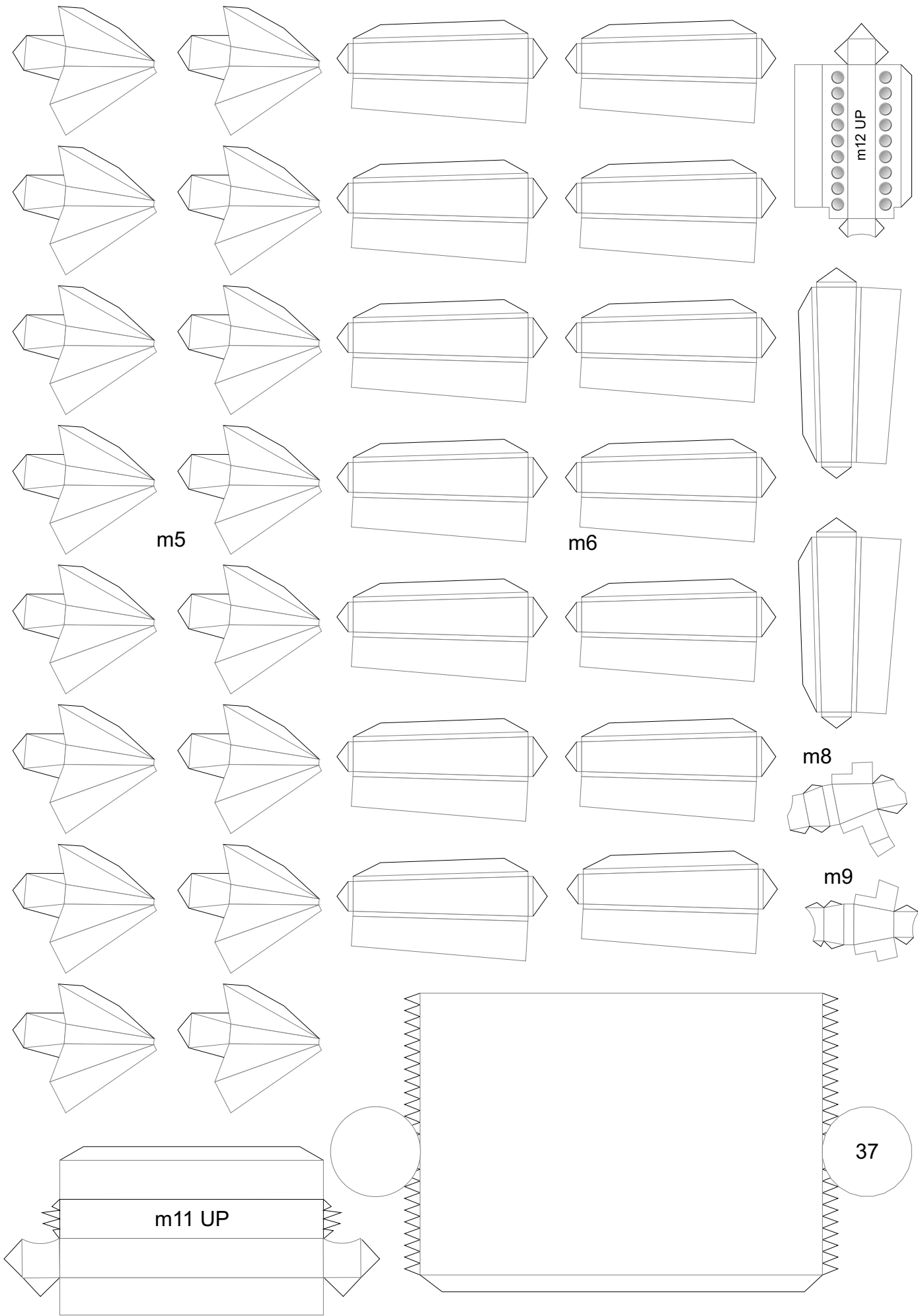


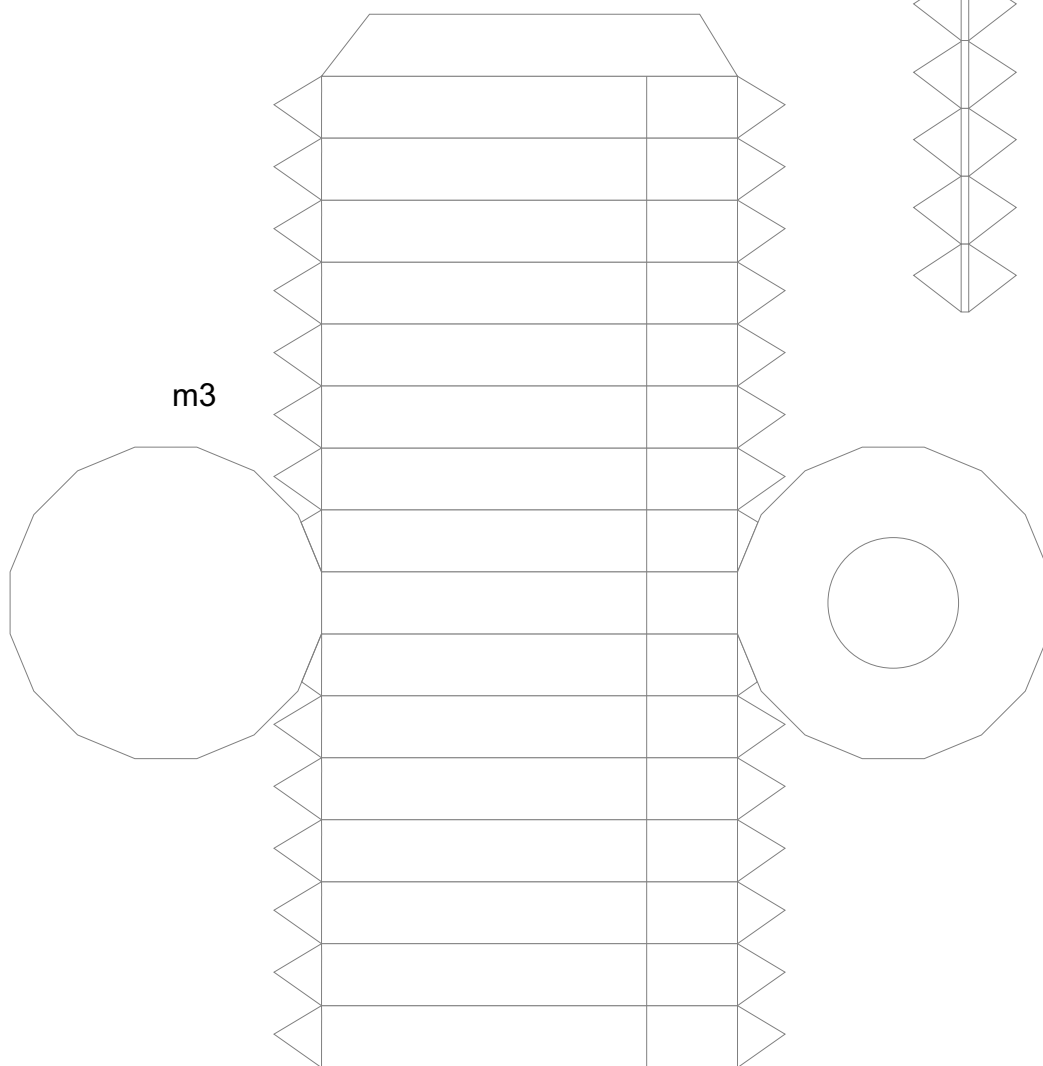
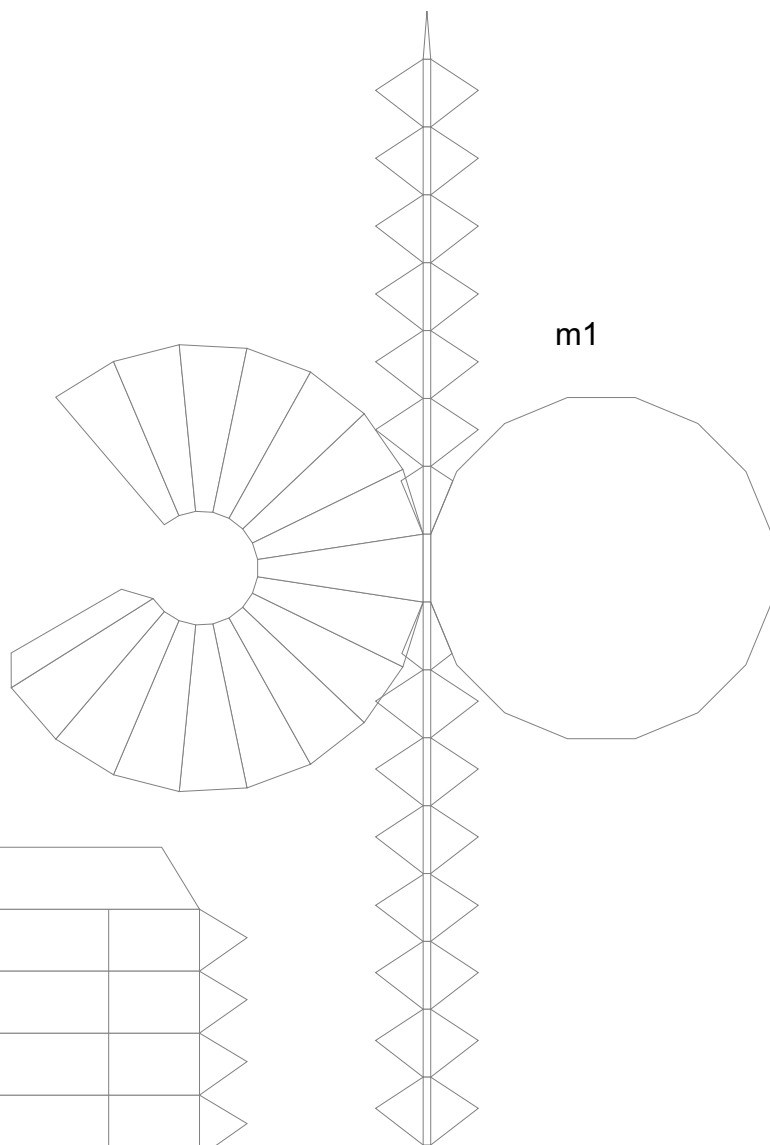
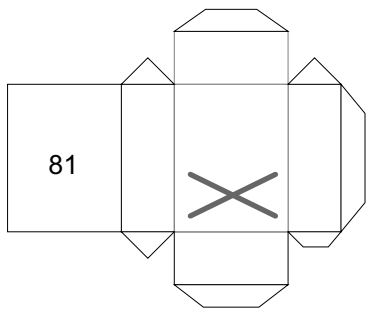






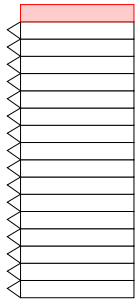
(optional: laminate m6 to 1mm cardboard;  
paint the edges and the back side)





align m6 here



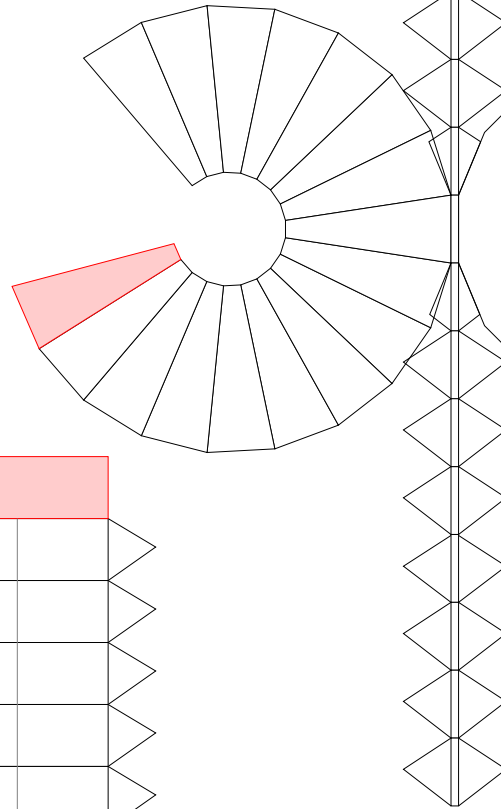


m2

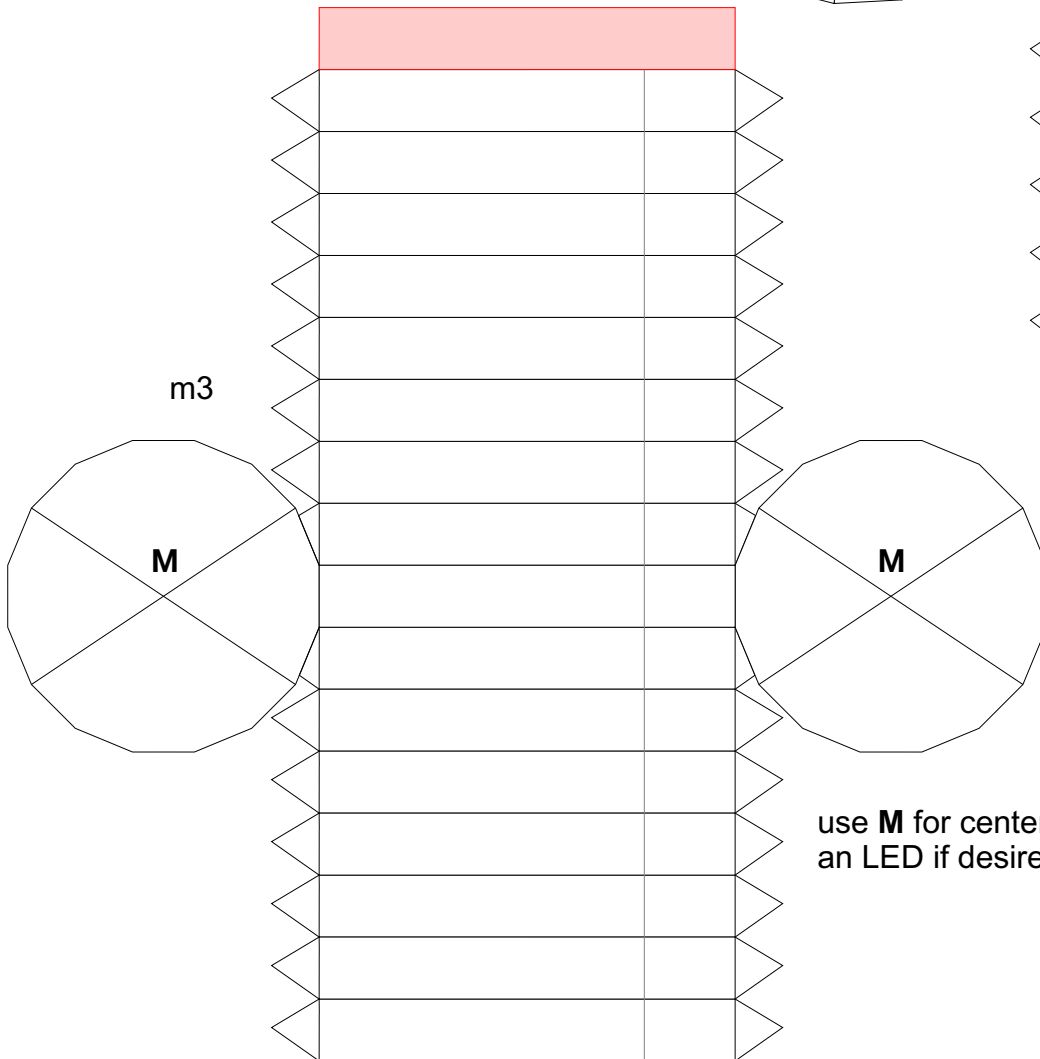
**Muzzle  
(clear parts)**  
red = glue tabs



m4 (optional part)



m1

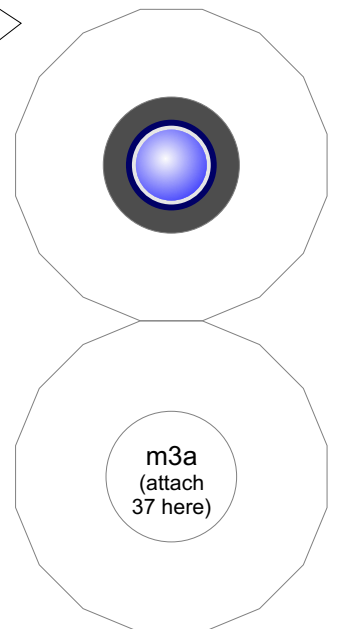


m3

**M**

**M**

use **M** for centering  
an LED if desired



m3a  
(attach  
37 here)

m10  
(optional)

