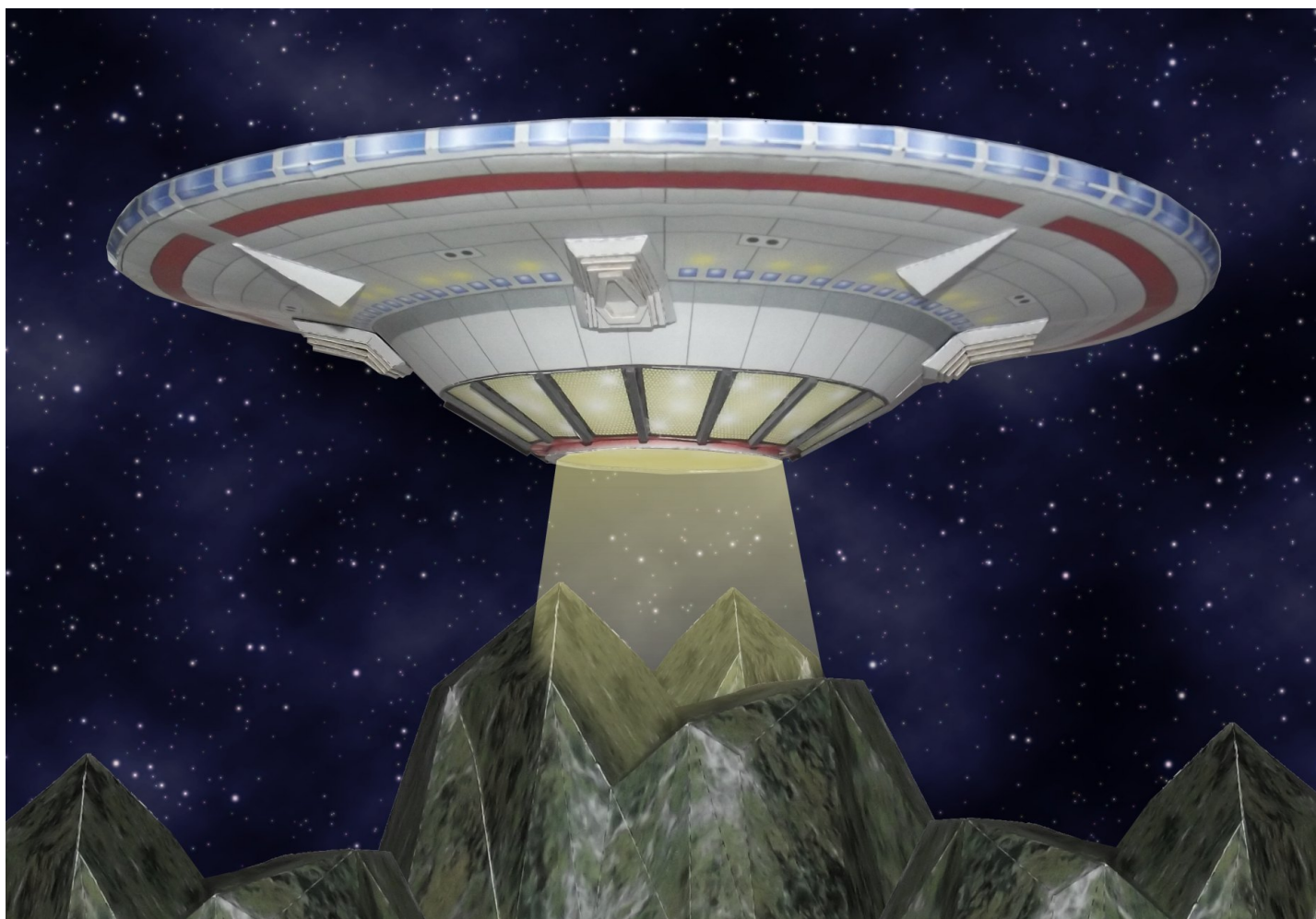


# BATTLESTAR GALACTICA

## DR Z'S ANTIGRAVITY SHIP



This cardmodel is free. It is a non-profit fan project and for personal use only. No commercial use.

Battlestar Galactica ©, (R) and TM Universal City Studios / SyFy Channel. No infringement intended.

Please post pictures of your builds on [www.zealot.com](http://www.zealot.com) or send them to [gal78@hotmail.de](mailto:gal78@hotmail.de) (please refer to "model pics" or your mail will be regarded as spam).

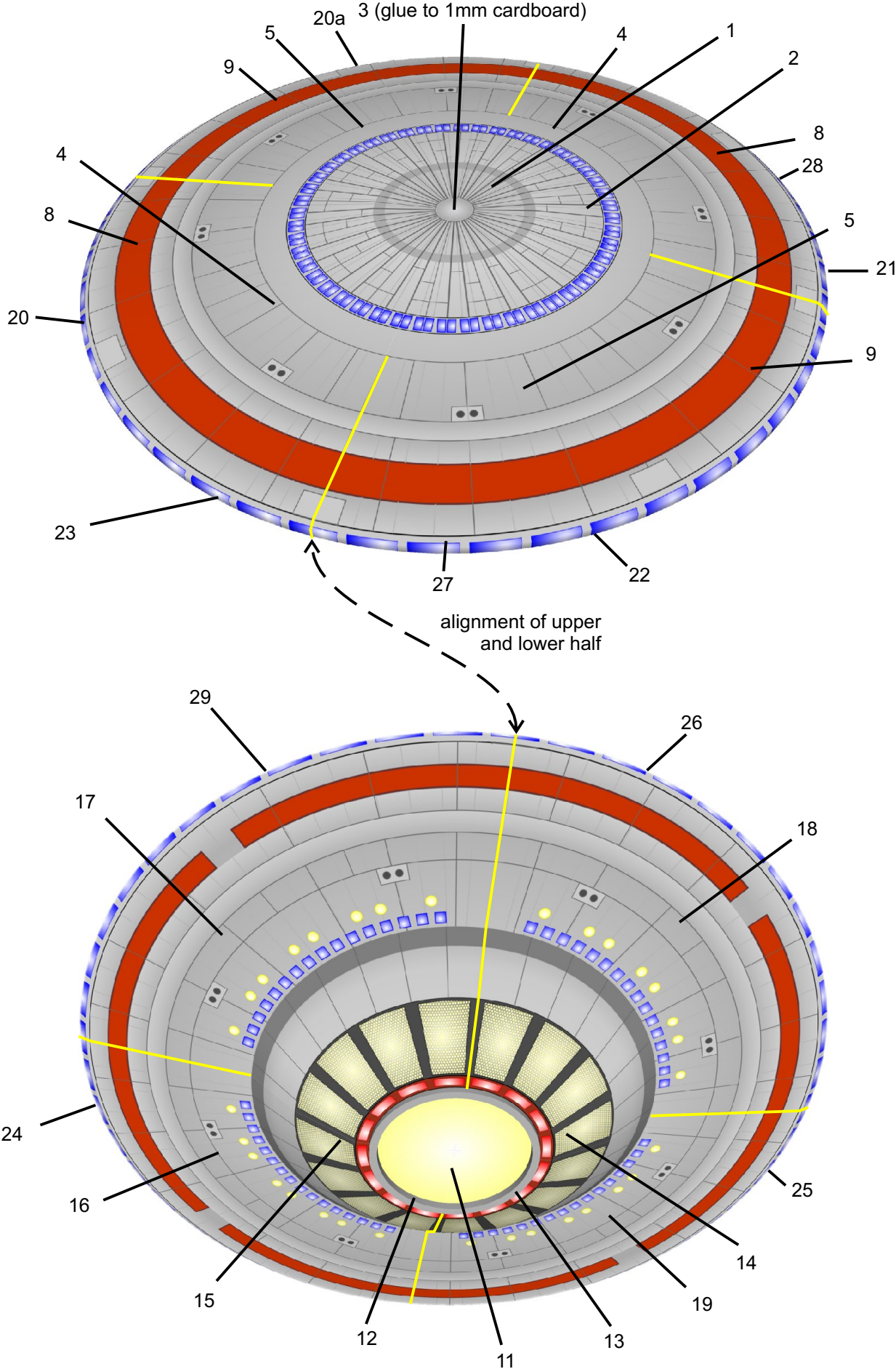
Have fun and enjoy!

TIP: You will achieve a much more pleasing result if you cut off the flaps on curved surfaces and glue the parts together from behind with paper strips. Feel free to extract page 14 and to recolour the template in your favourite graphic program.

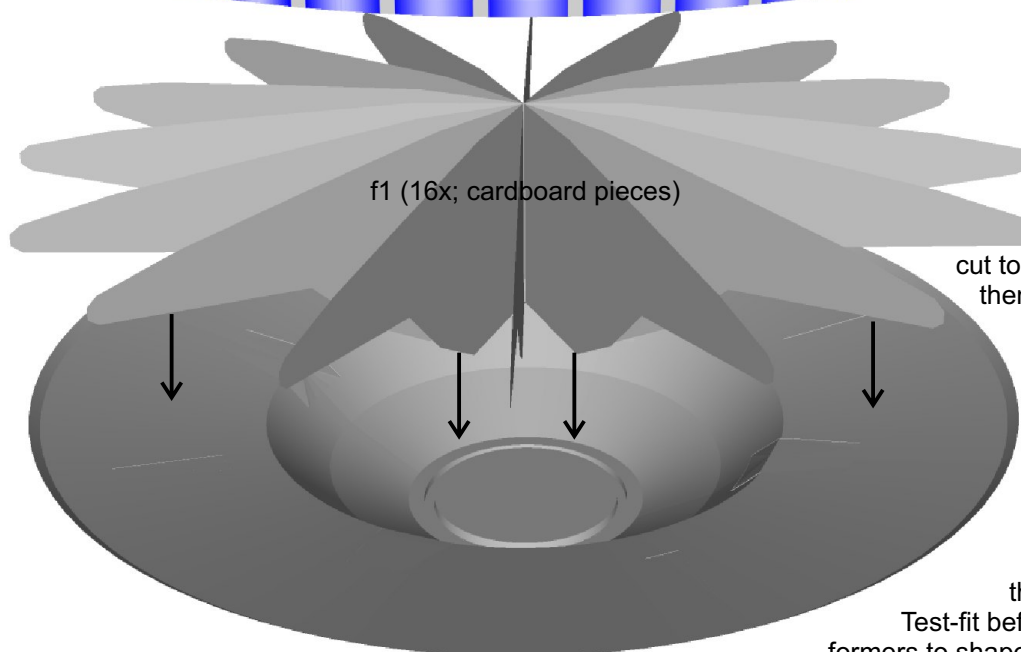
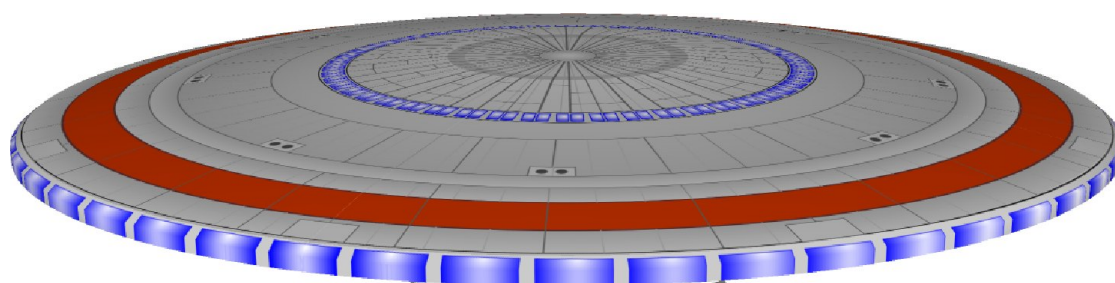
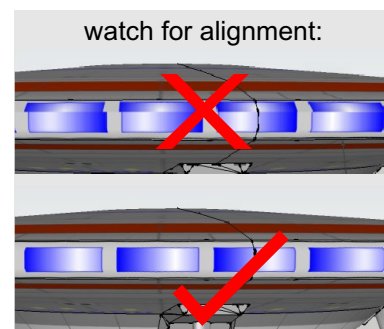
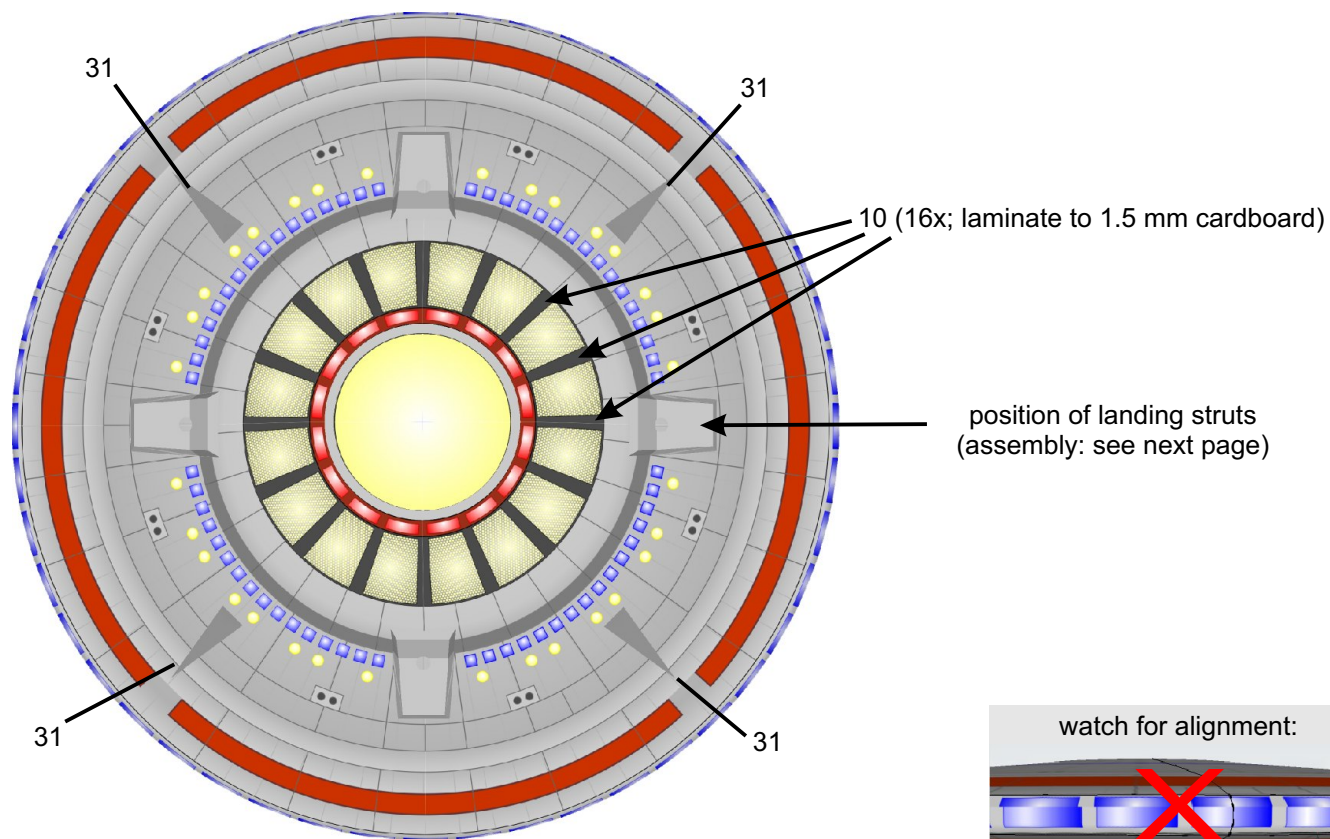


7/2012

Assembly:



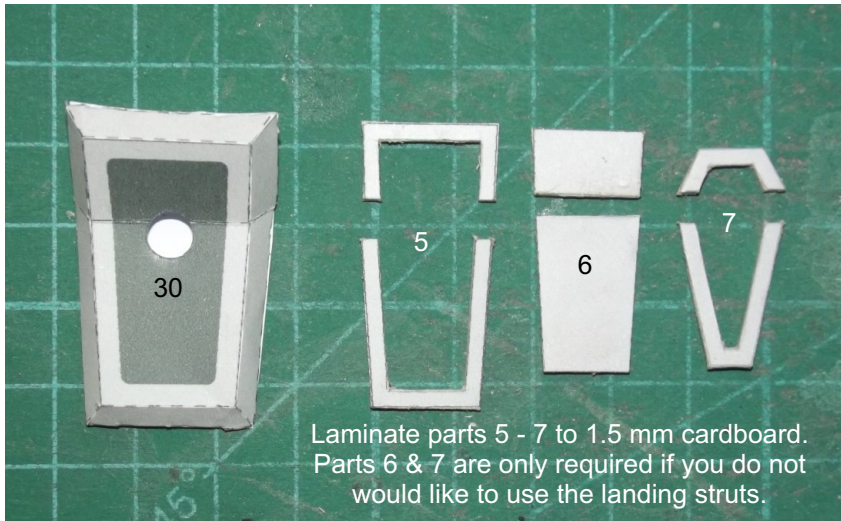




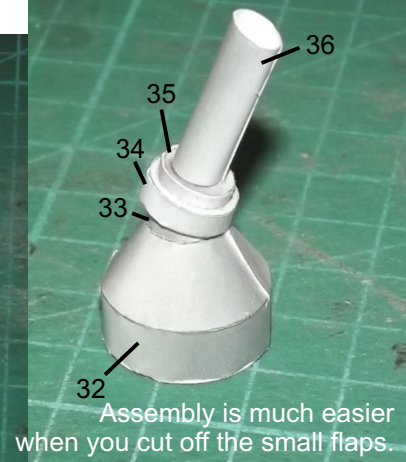
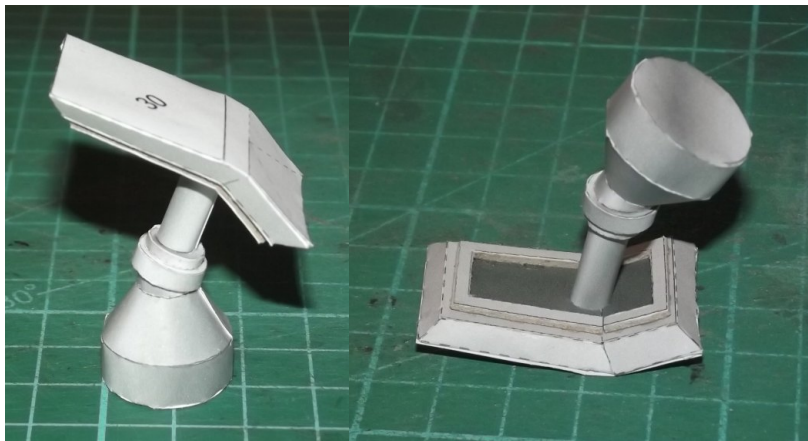
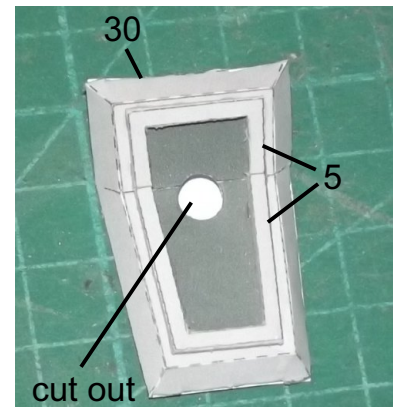
Use f1 as a stencil and cut out 16 pieces of cardboard. Test fit, cut to shape if necessary and then tape them to the lower hull as shown.

Glue one quarter section of the hulls together and then proceed with the next quarter section. Test-fit before glueing and cut the formers to shape so that everything fits.

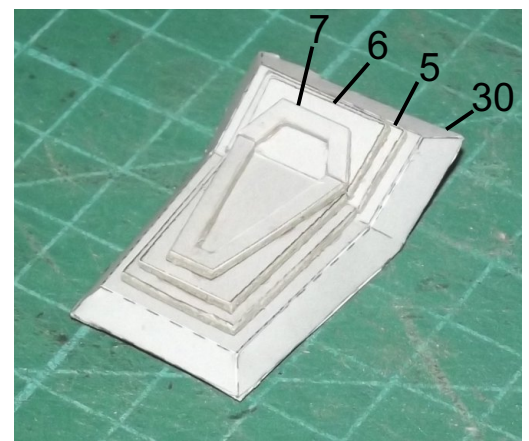
## Landing struts (4x)



## Version with landing struts:

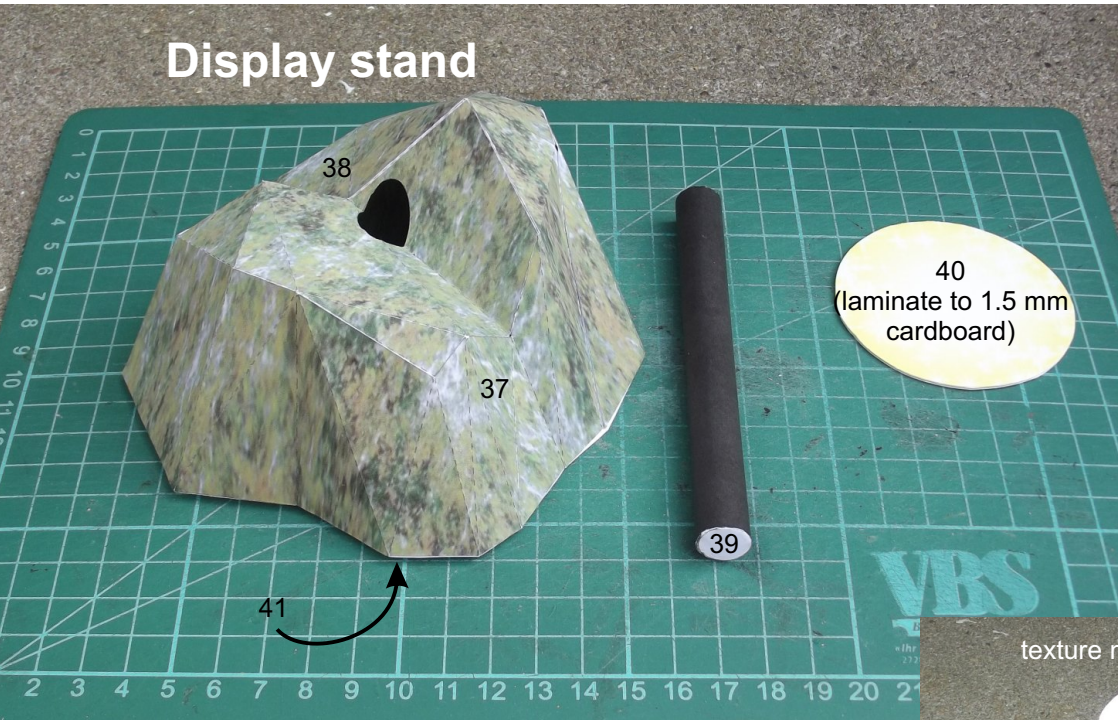


## Version without landing struts:

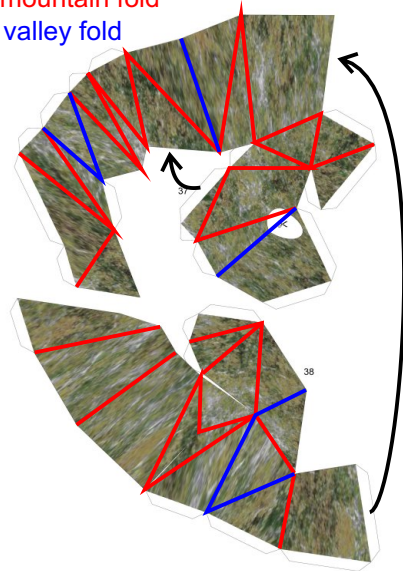




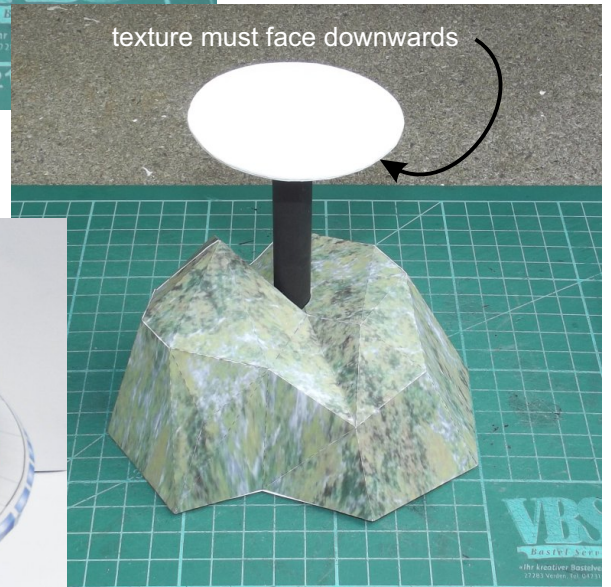
## Display stand



mountain fold  
valley fold



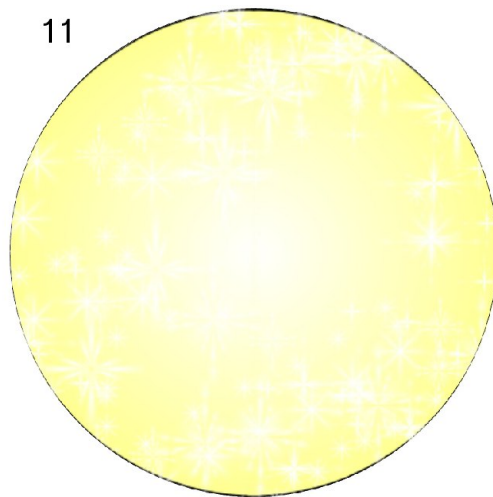
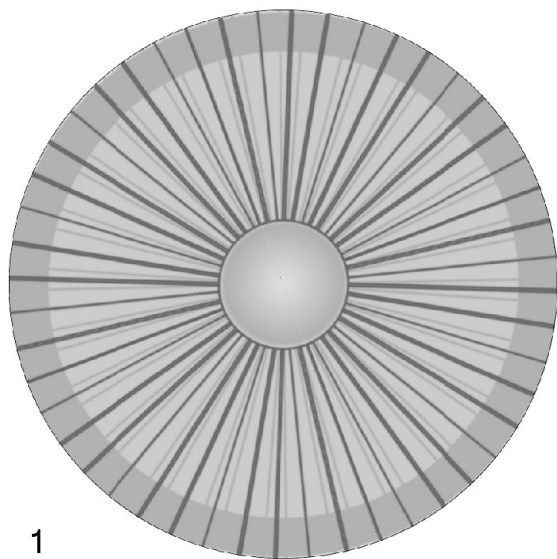
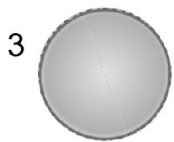
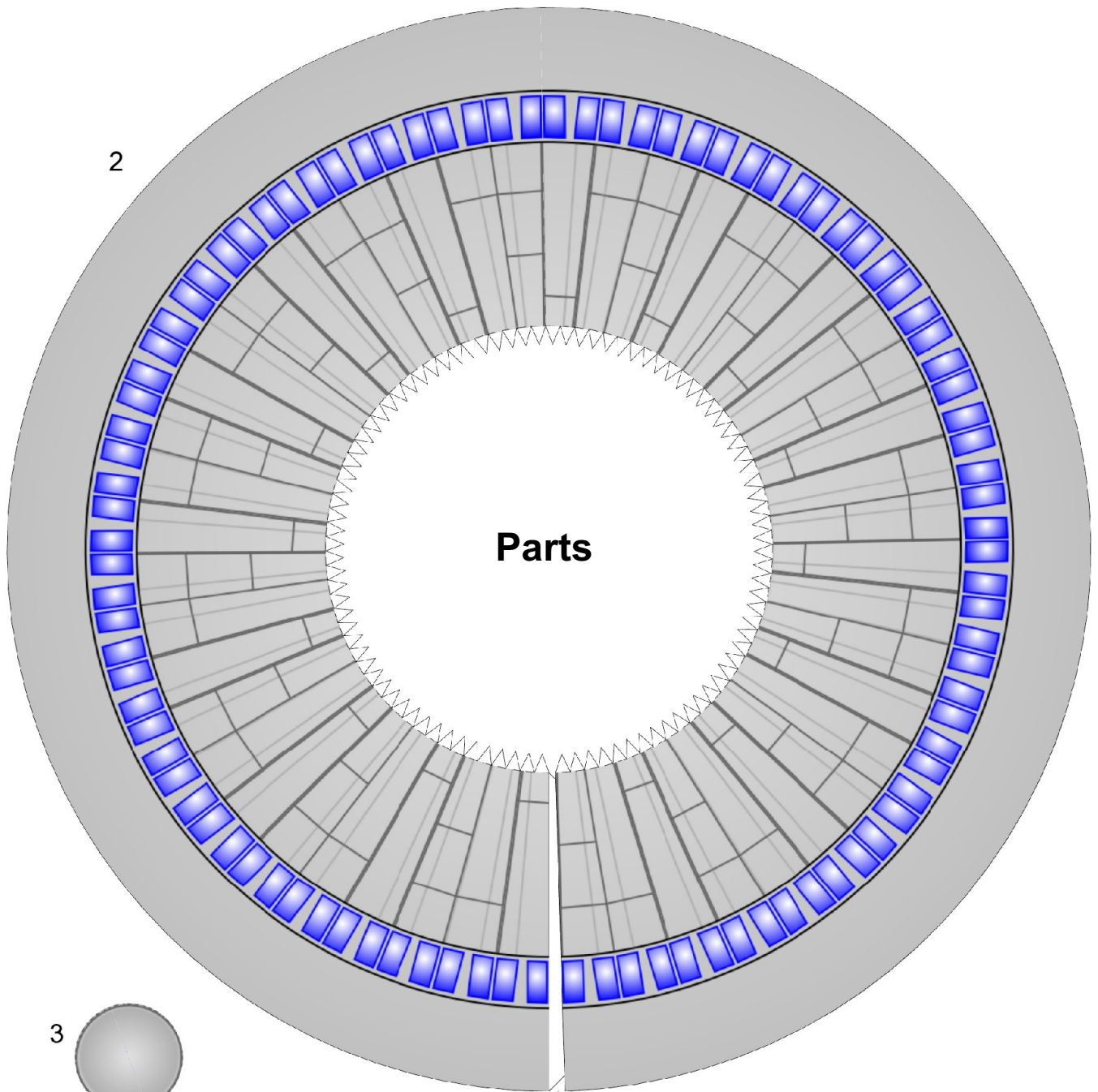
texture must face downwards

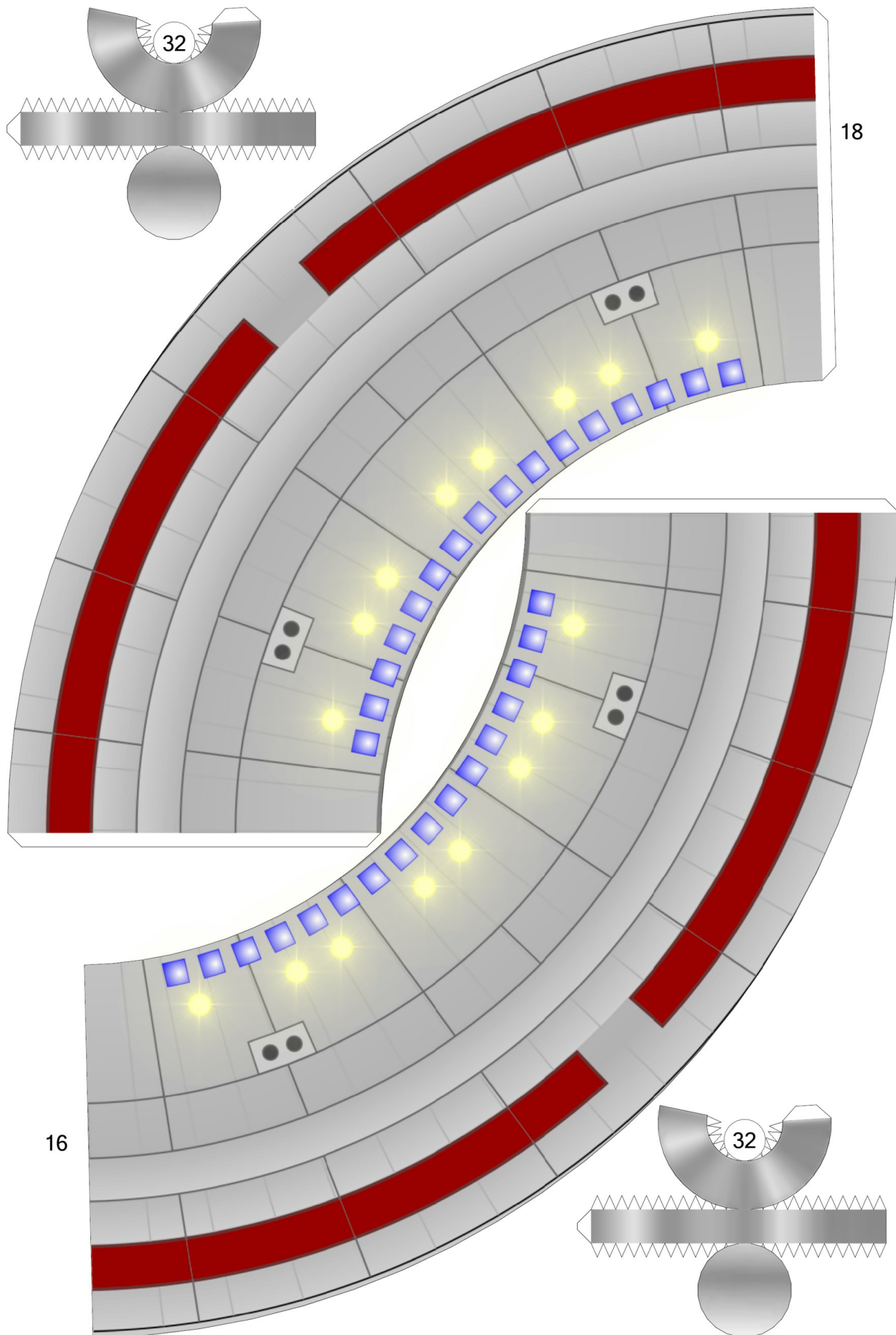
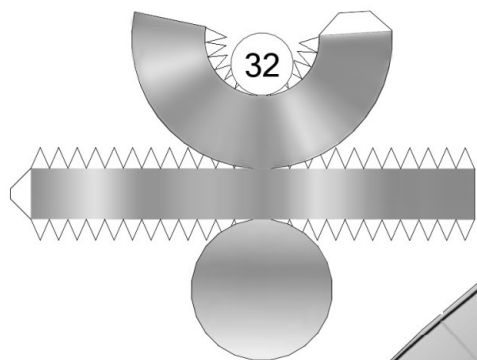


**Finished!**



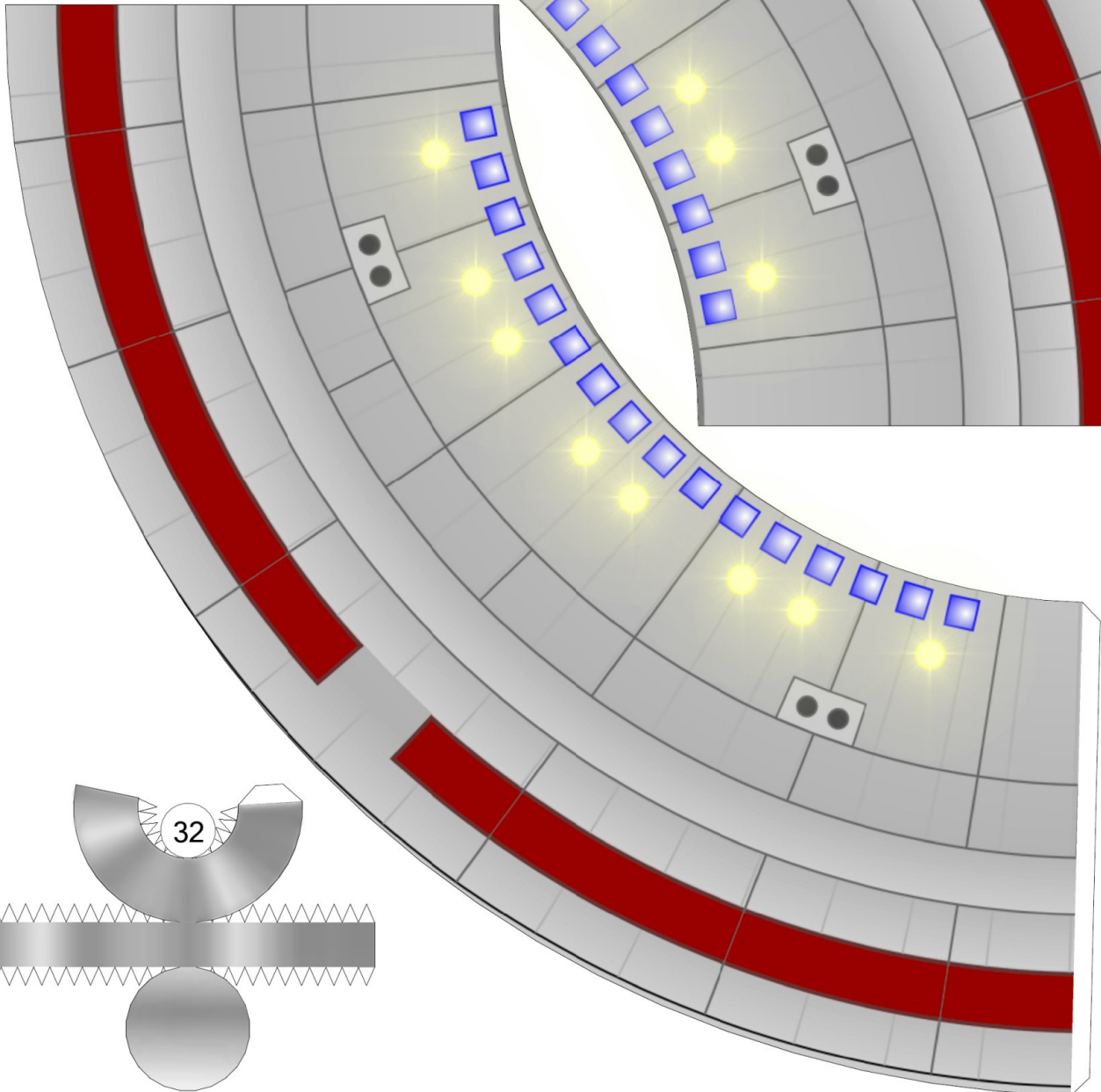
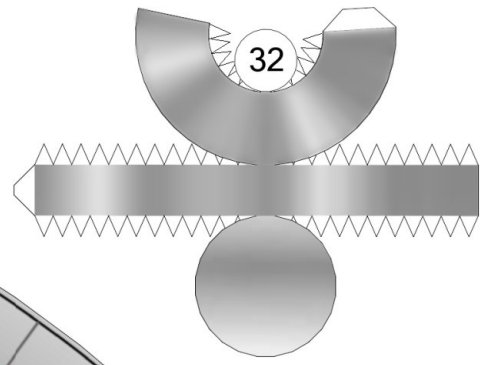






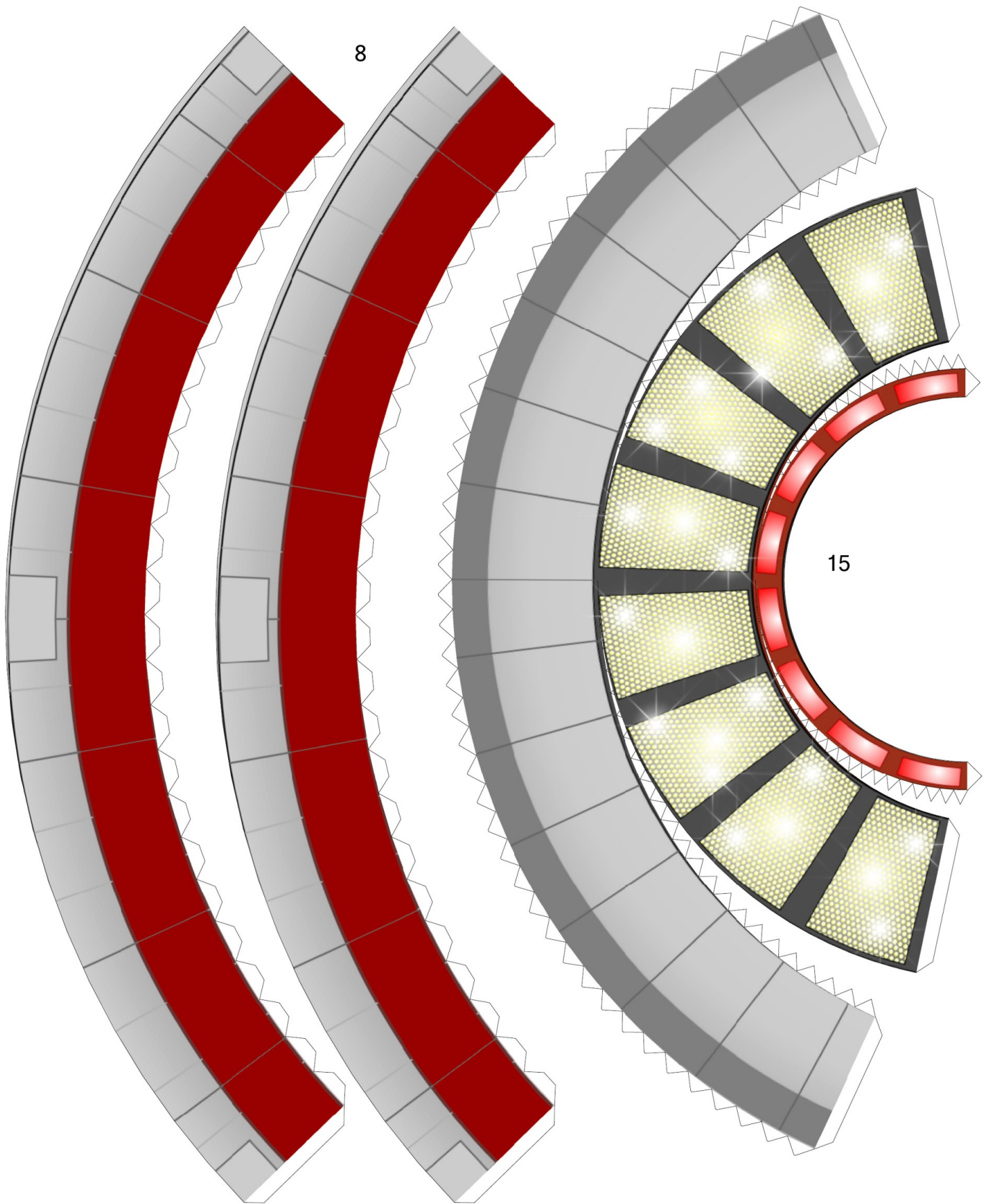


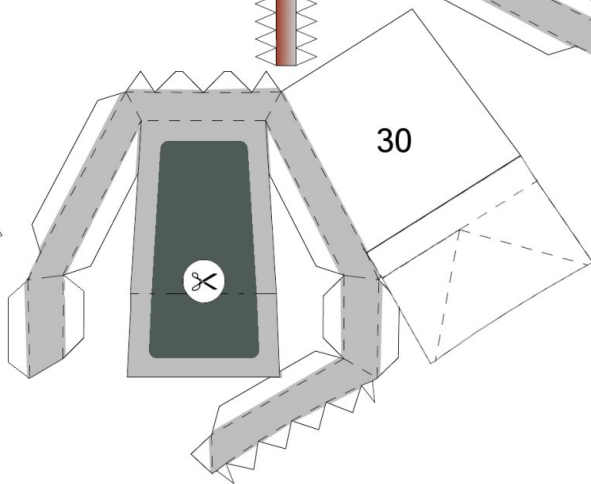
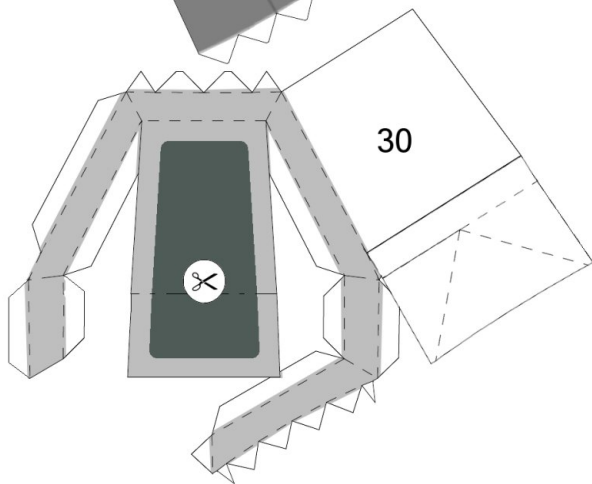
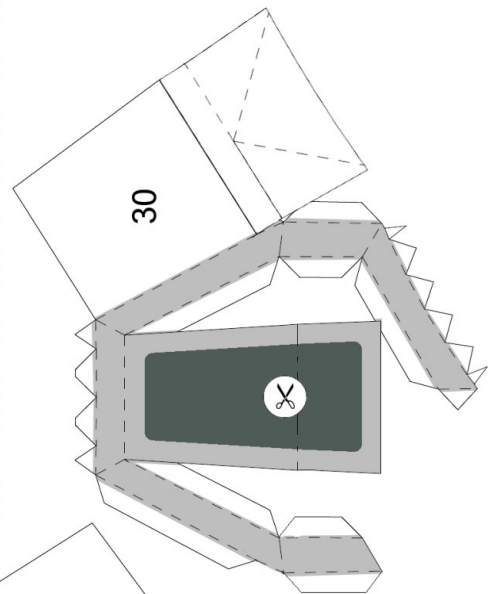
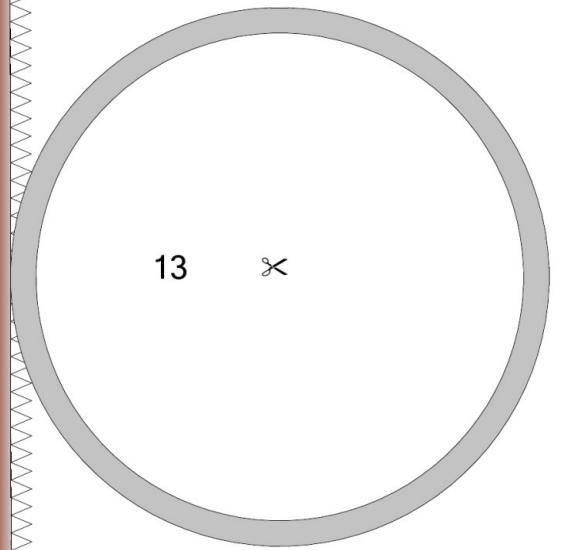
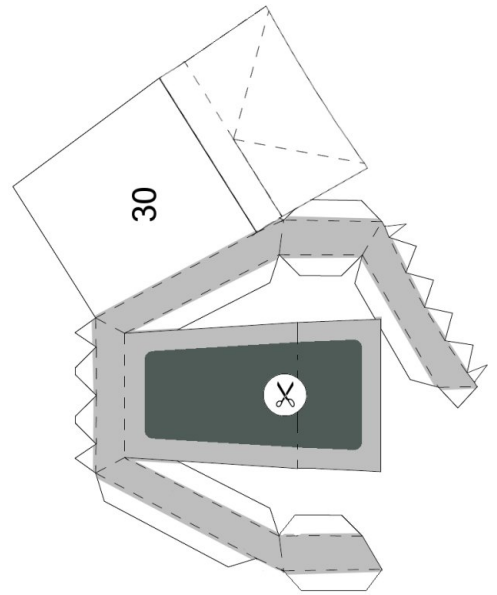
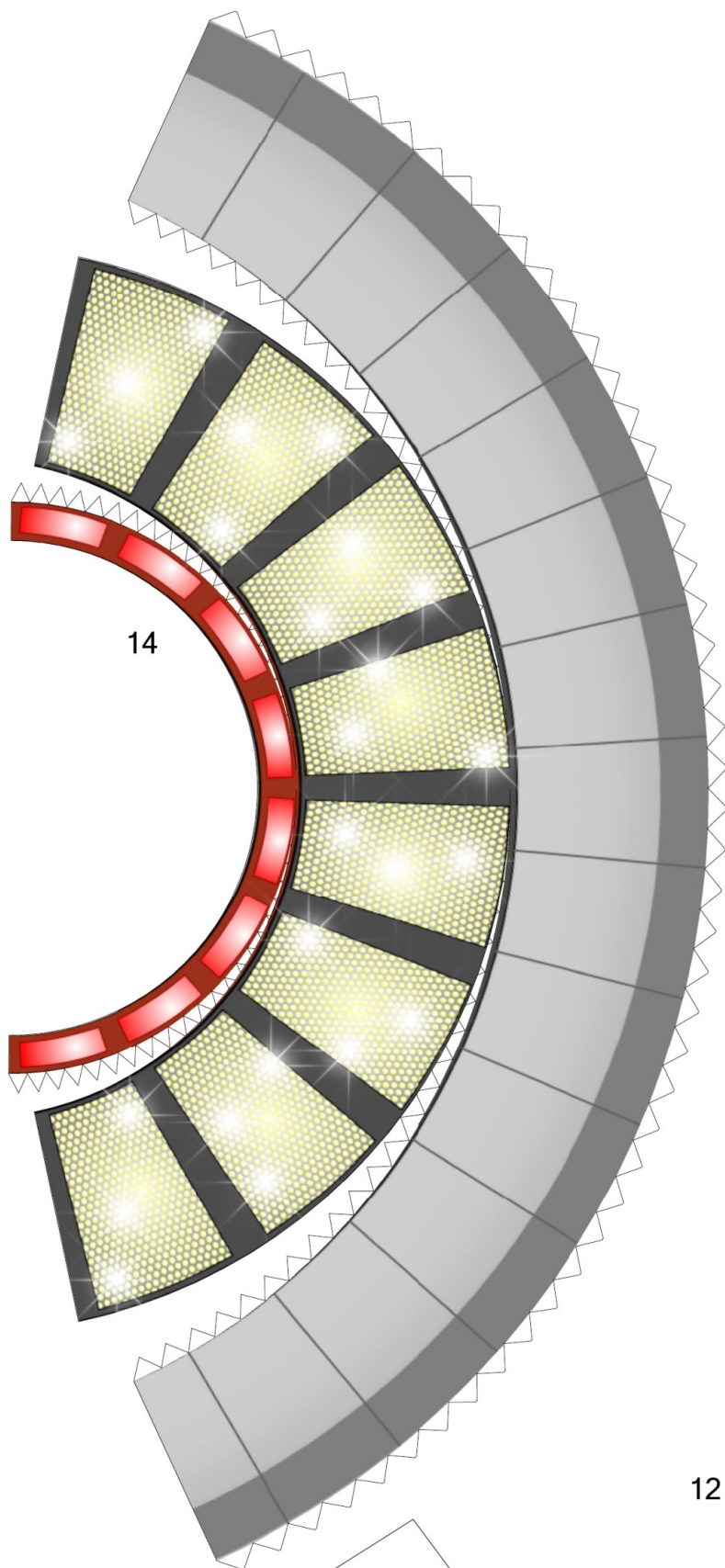
19



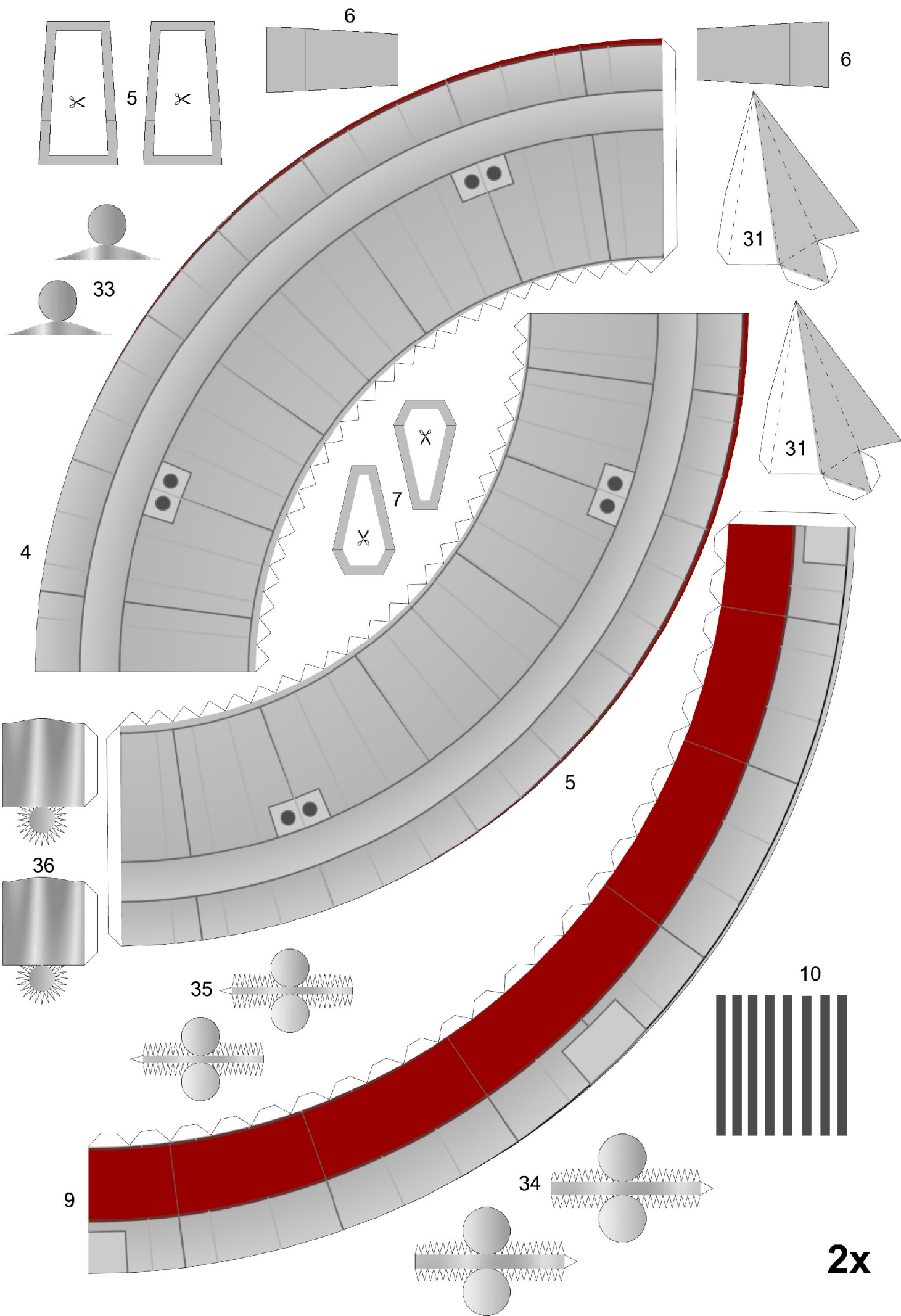
17



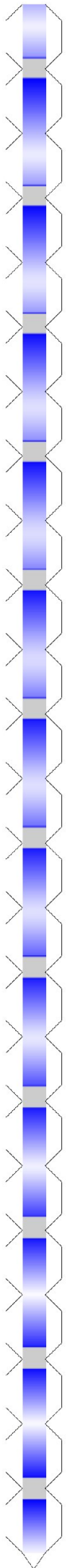




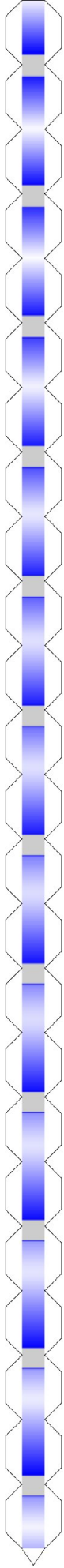




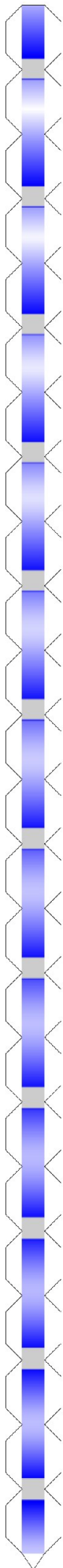
21



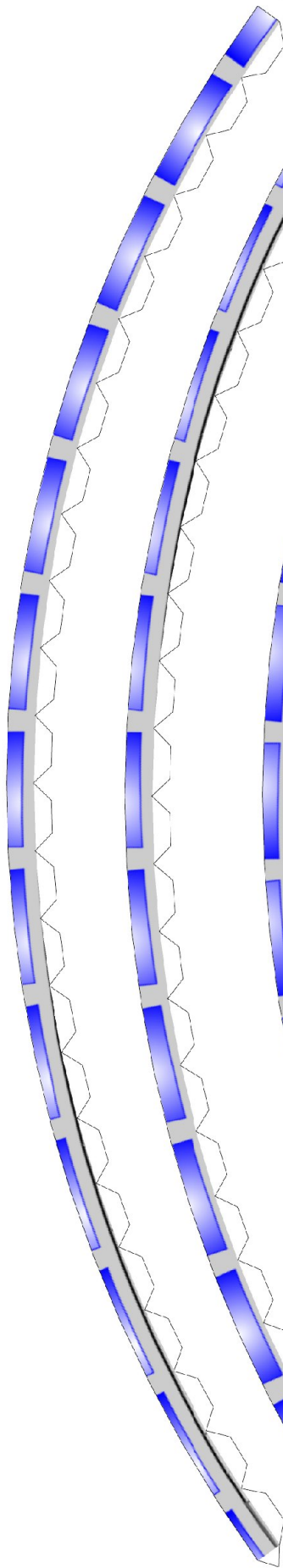
22



23



24



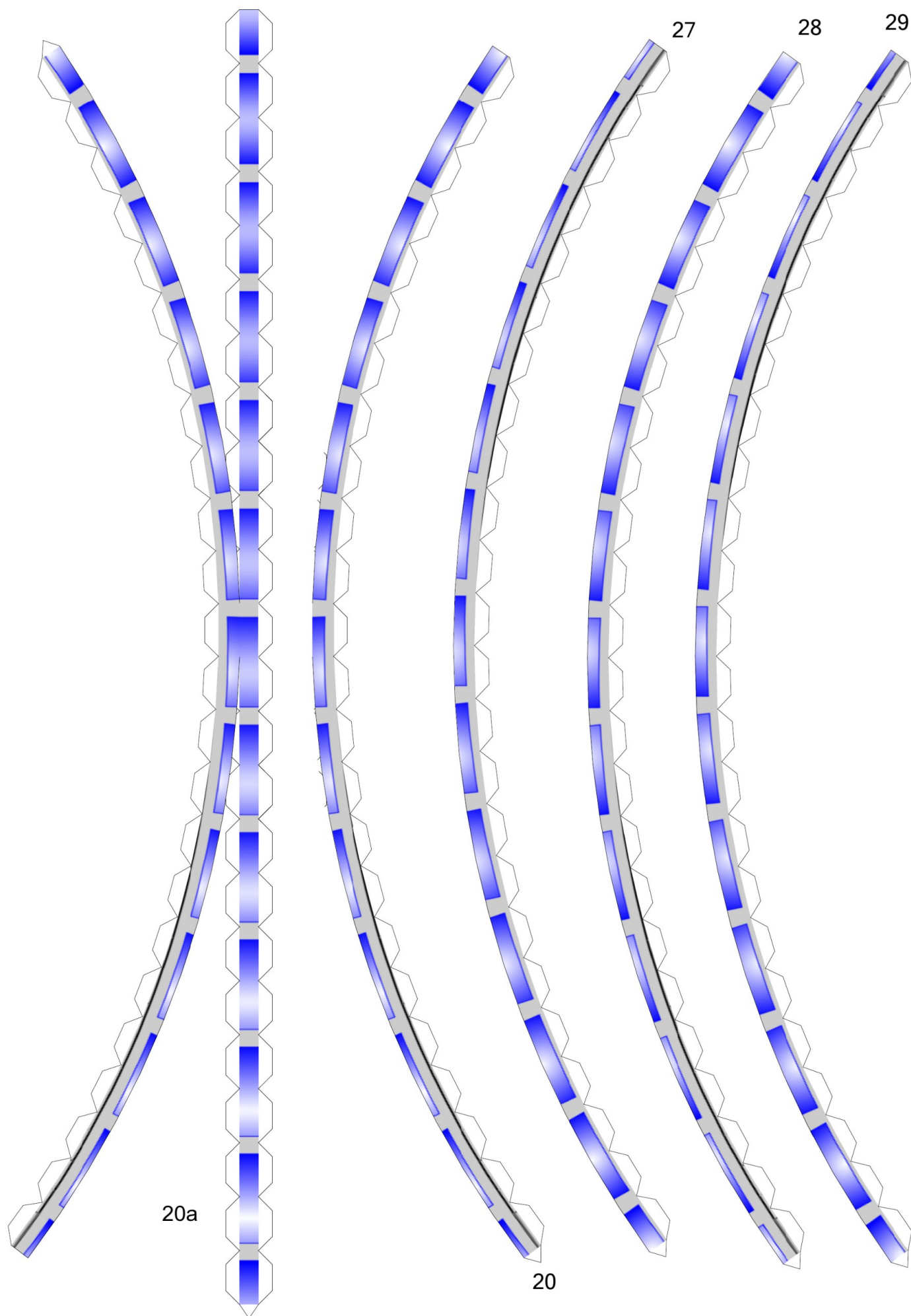
25

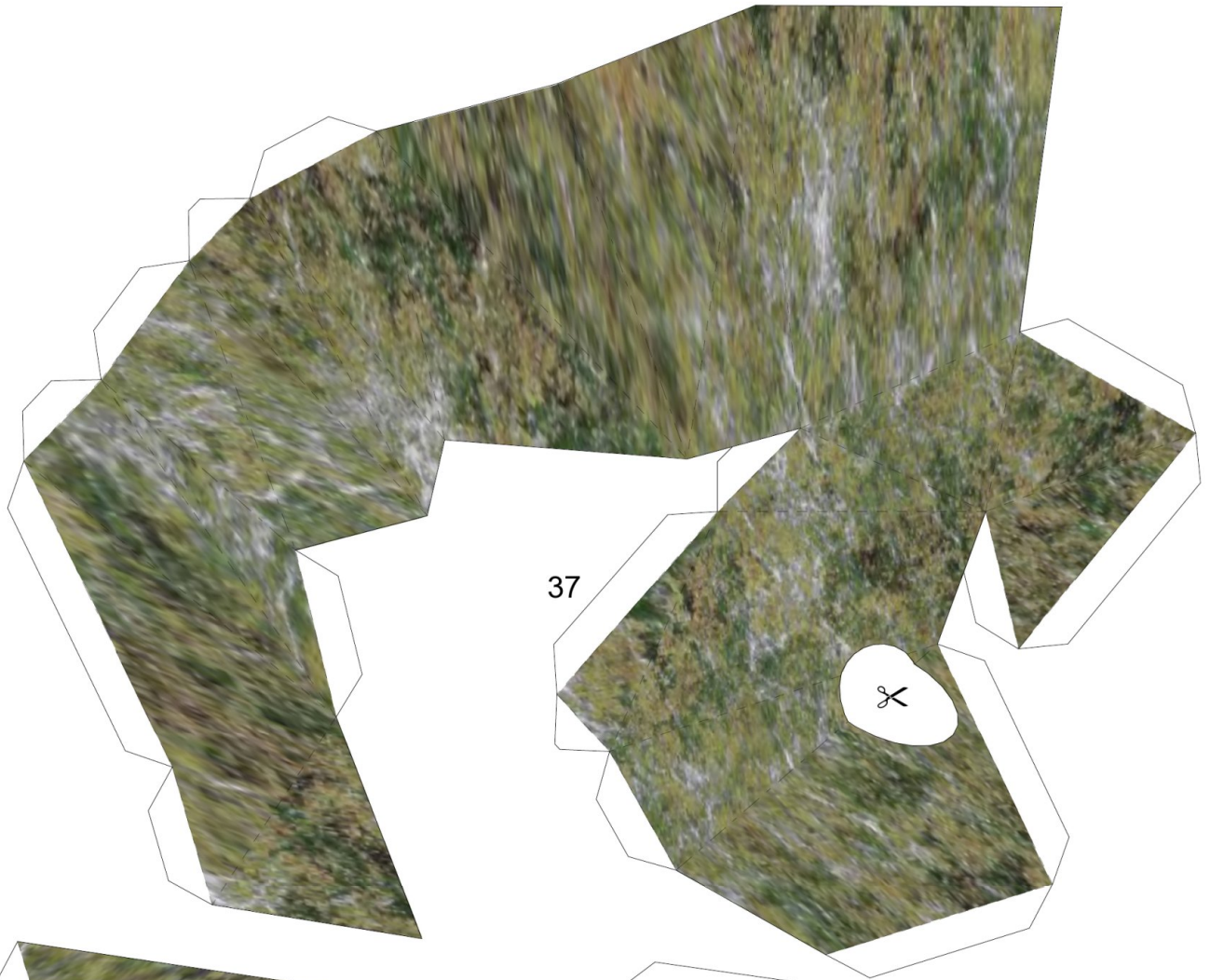


26

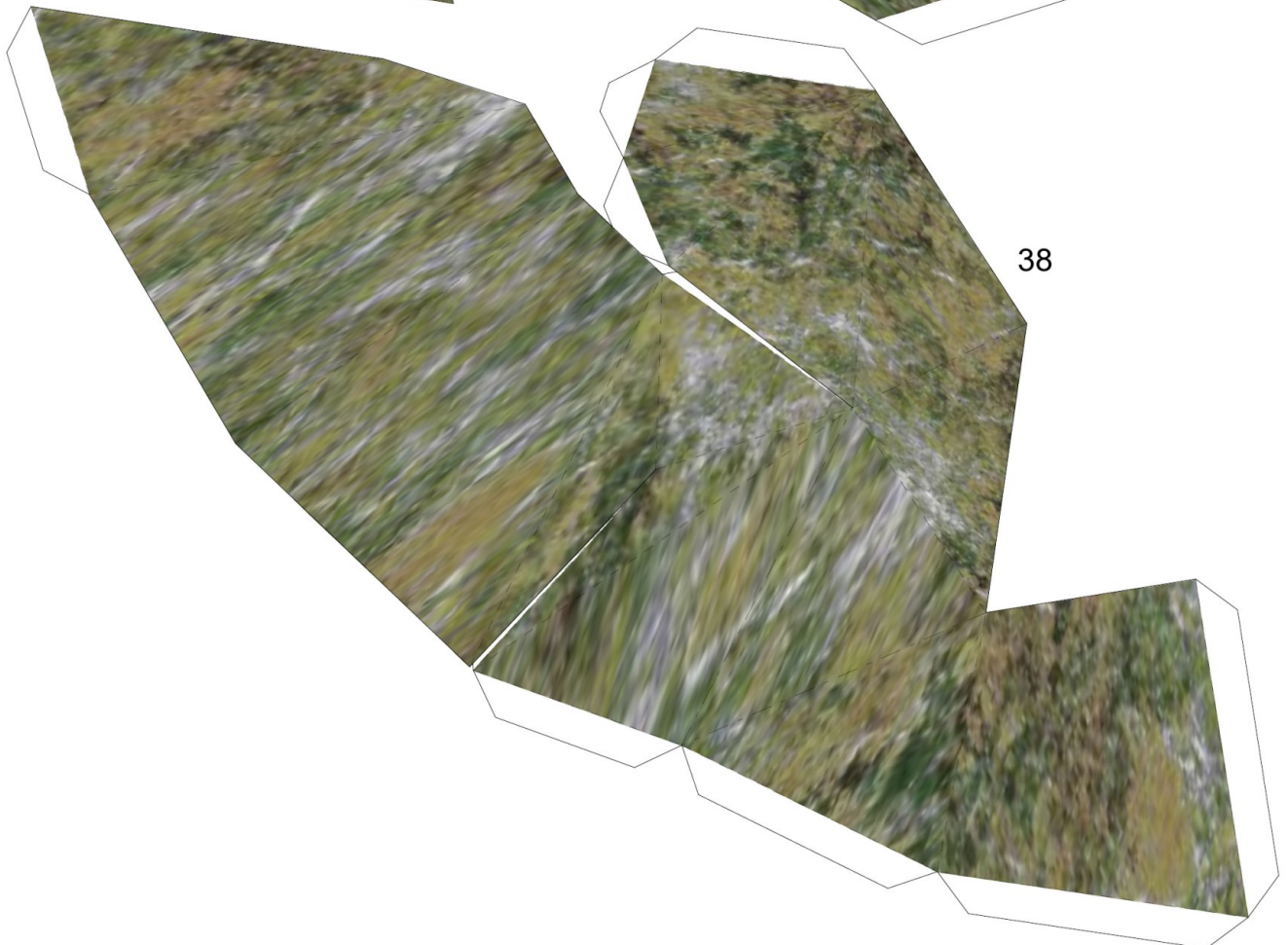








37



38



