

BATTLESTAR GALACTICA

COLONIAL RAPTOR



This cardmodel is free. It is a non-profit fan project and for personal use only. No commercial use.

Battlestar Galactica ©, (R) and TM Universal City Studios / Sci-Fi Channel. No infringement intended.

Original 3D model and textures by the creators of the Battlestar Galactica Ship Pack Coxson, MadJohn, and Dave975. Additional textures by ZOIC Studios. Cleanup and prep, retexturing, unfolding, arrangement and landing feet by Marcell "Revell-Fan" von dem Berge (7/2012).

This paper model is based on the first Raptor CG model created by ZOIC Studios; it may differ from later Raptor CG models in certain respects. The kit is available in different colour schemes. These assembly instructions are required for every version. The basic kits do not come with a cockpit interior. Please use the add-on kit to upgrade your model.

To know more read this thread:<http://www.zealot.com/forum/showthread.php?t=151556>

Please post pictures of your builds on www.zealot.com or send them to gal78@hotmail.de (please refer to "model pics" or your mail will be regarded as spam).

Have fun and enjoy!



7/2012

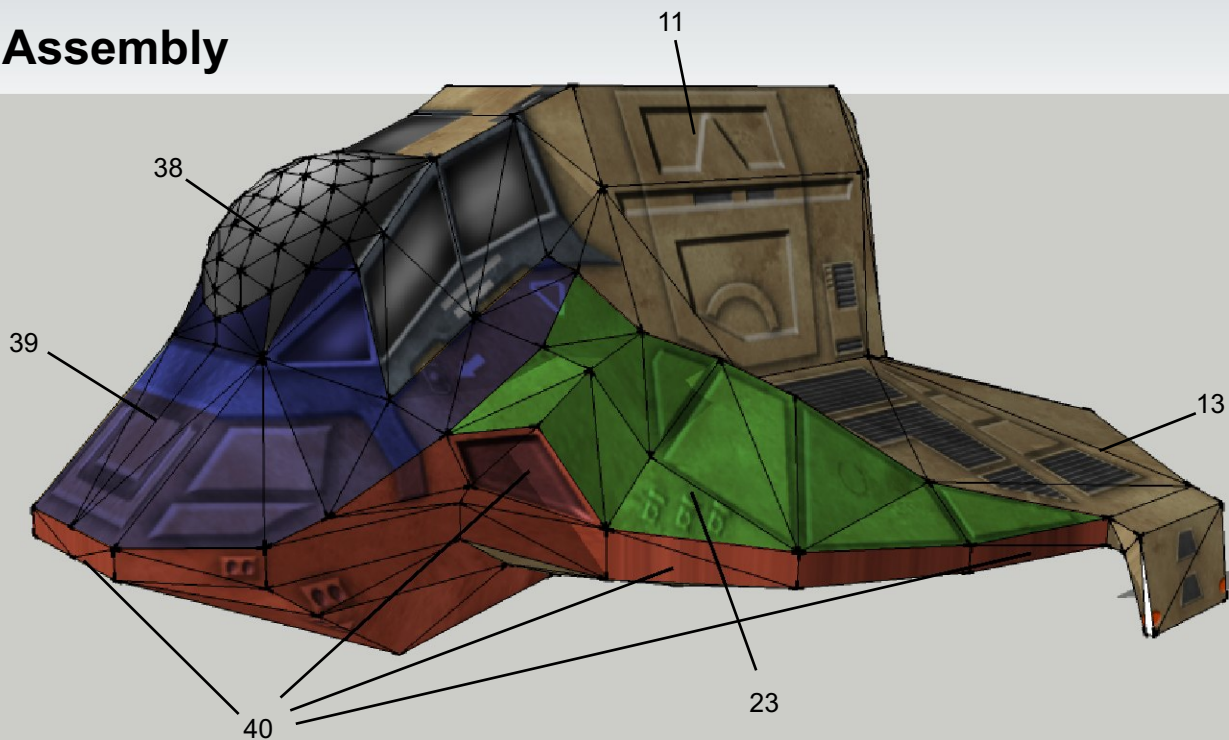
UPDATE / IMPORTANT NOTE:

A small mishap occurred while preparing the plans: Parts 12 & 13 have too many glue tabs. The four tabs where 12 & 13 are attached to part 11 are obsolete and can be cut off.

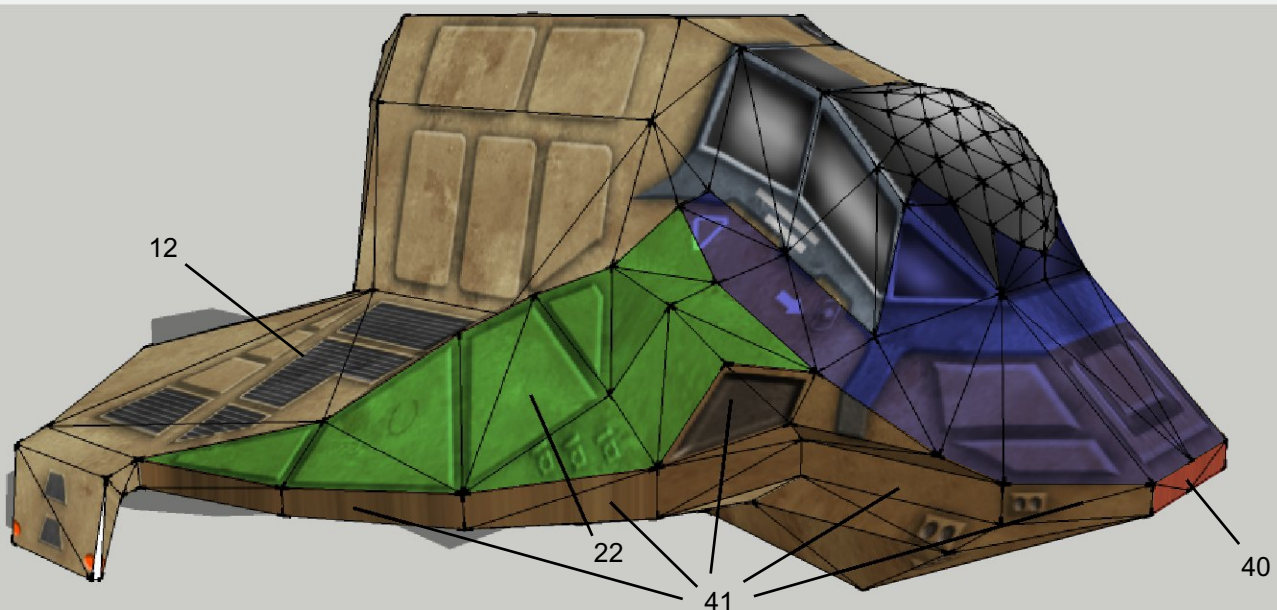
Many thanks to Chris "Rhaven Blaack" Tucker for spotting this!



Assembly



Parts placement; see next page for detail assembly



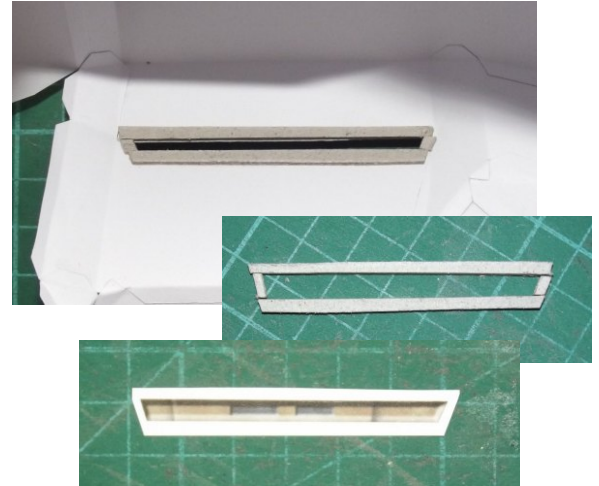
Cabin



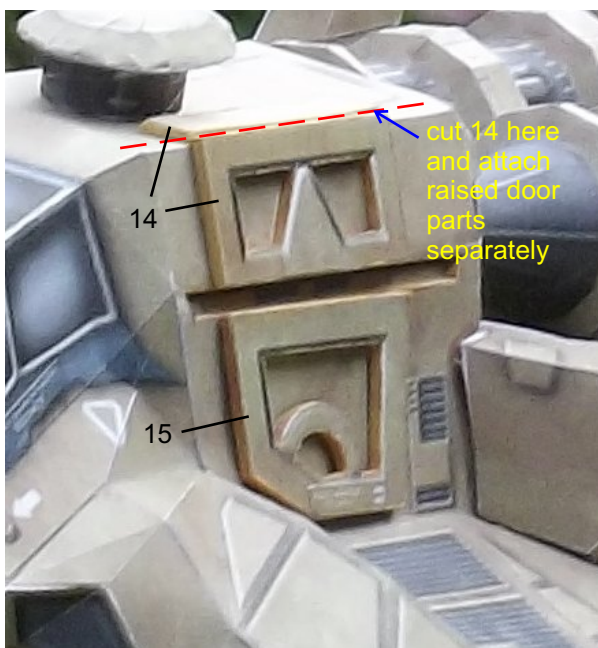
There are two ways to build the main cabin.

If you want to build the easy cabin you just have to cut out, fold and glue part 11 together with no modification.

If you would like to build a more sophisticated cabin cut out the printed recess on the door.



Glue 17 to 1.5 mm cardboard and attach to the inside of part 11. Paint the edges of the rim. Then close with part 16.

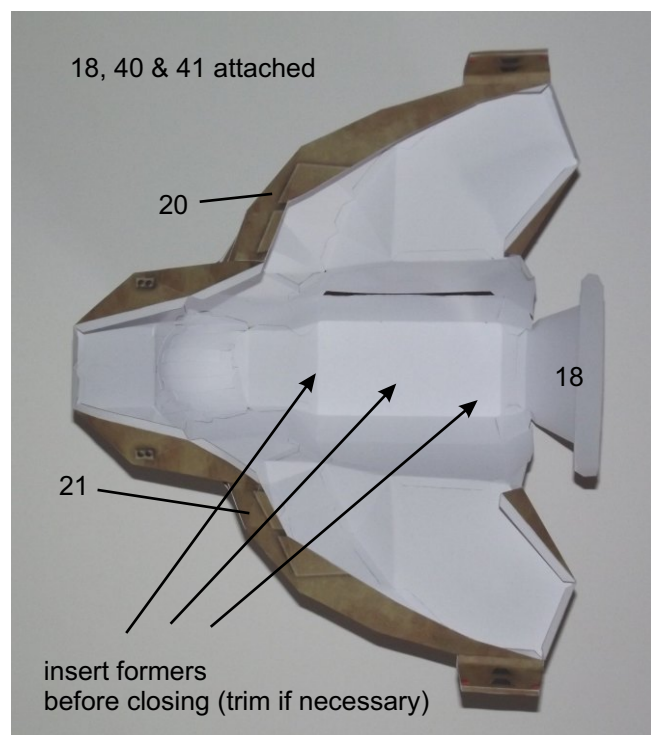
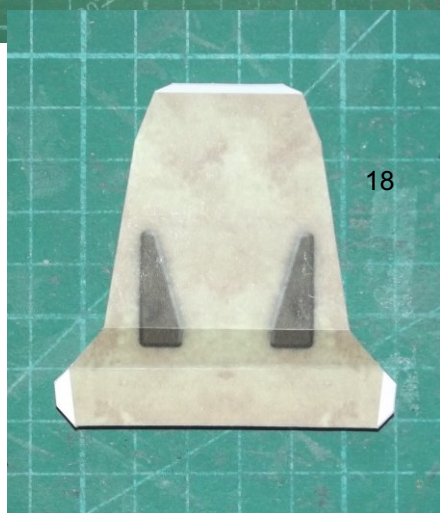
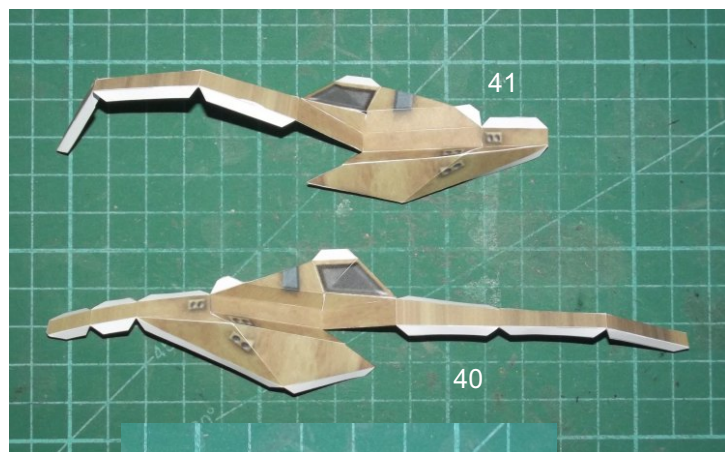
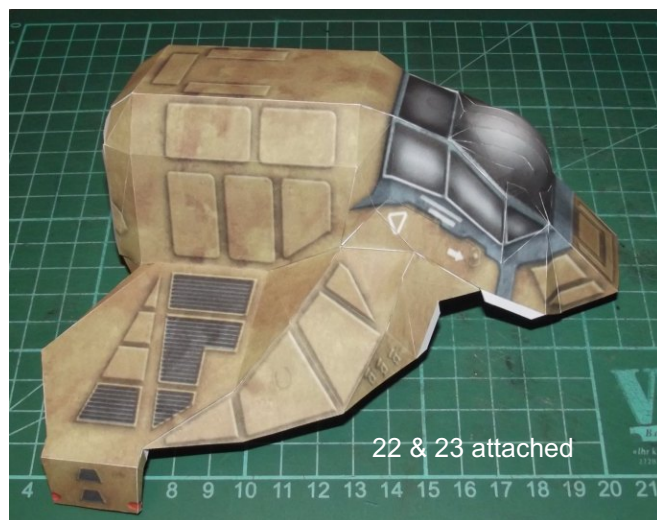
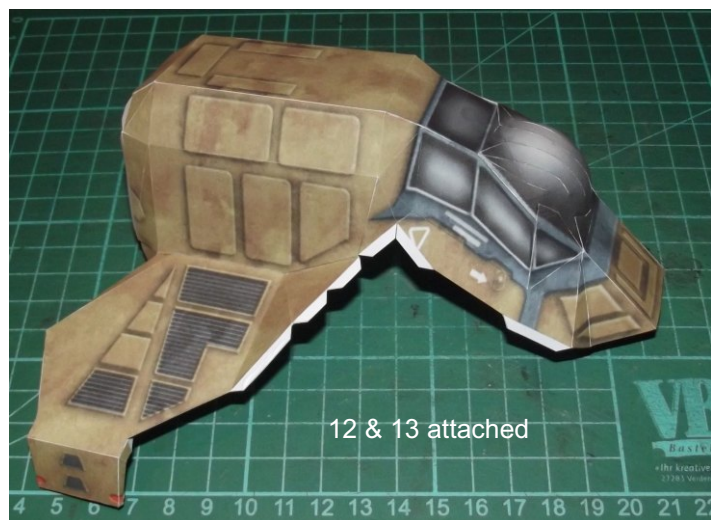
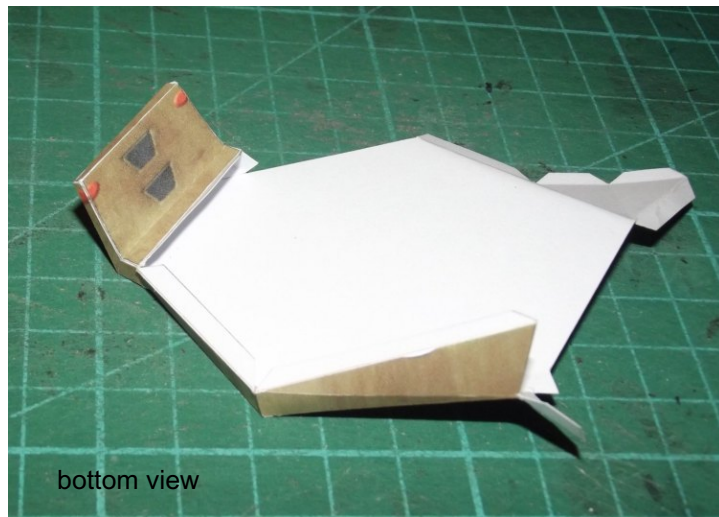
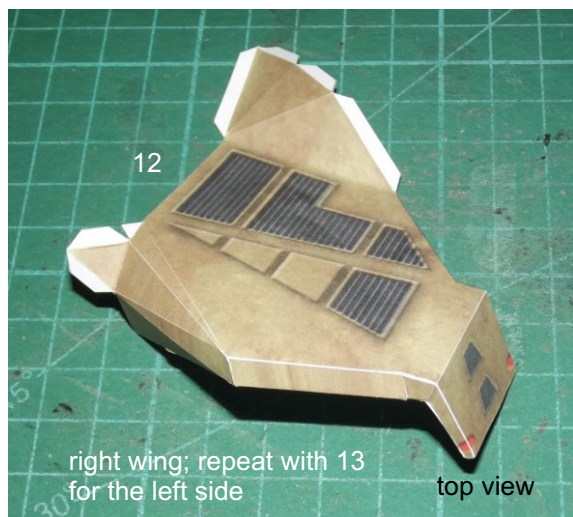


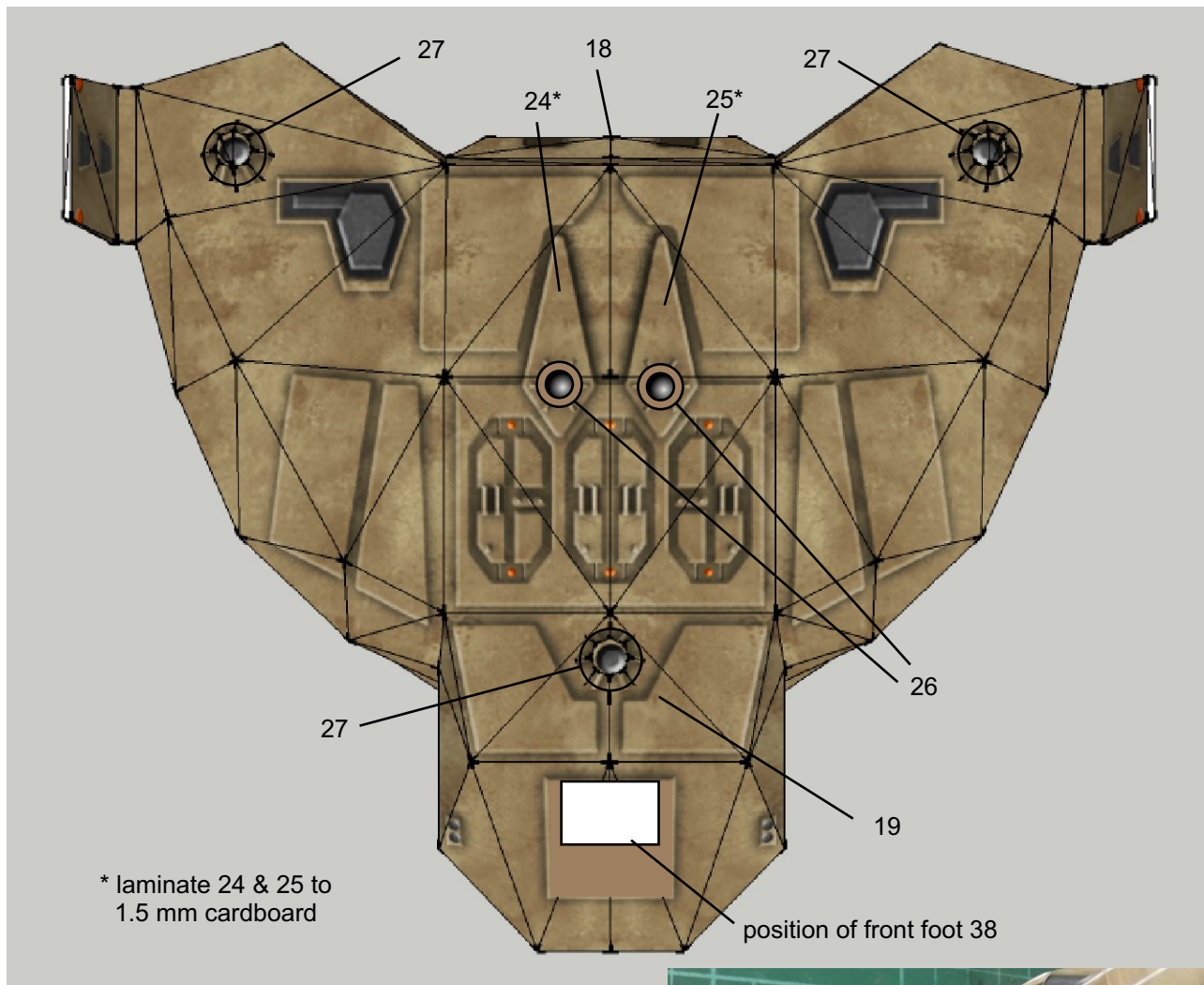
Glue 14 & 15 to 1.5 mm cardboard, cut out the white areas and paint the edges. Attach to 11. You'll achieve a more pleasing result if you cut part 14 in two parts at the folding line where the upper part bends around the roof and to attach the two parts separately.



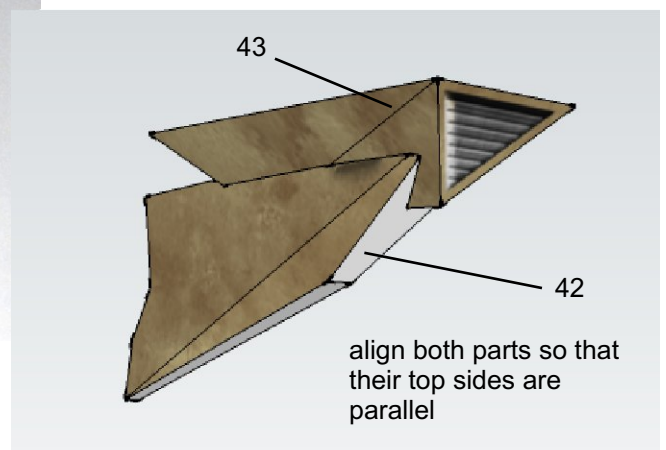
Part 38: Cut off the flaps on the curved areas and glue the cockpit from behind with paper strips to achieve a more pleasing result.

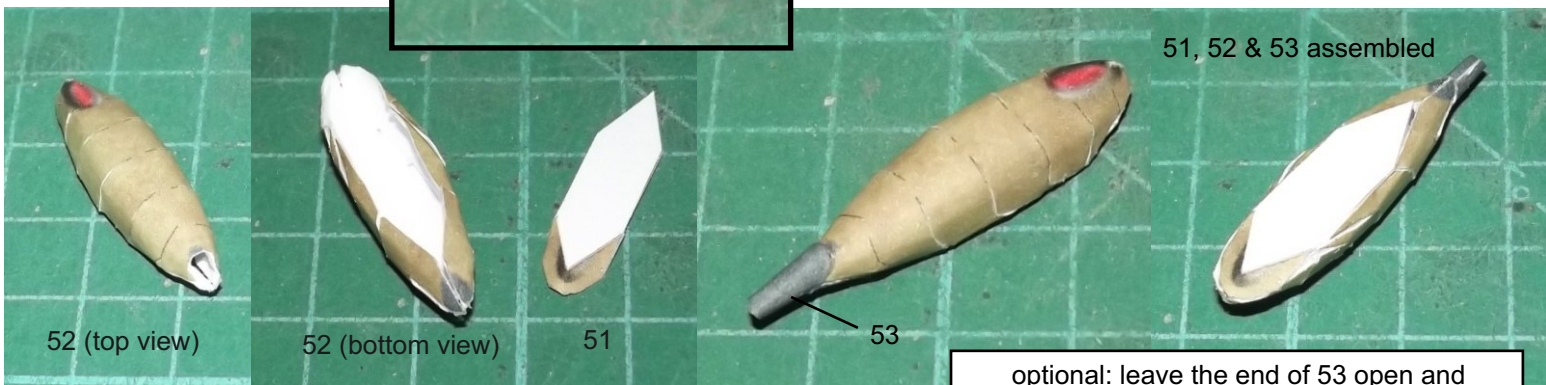
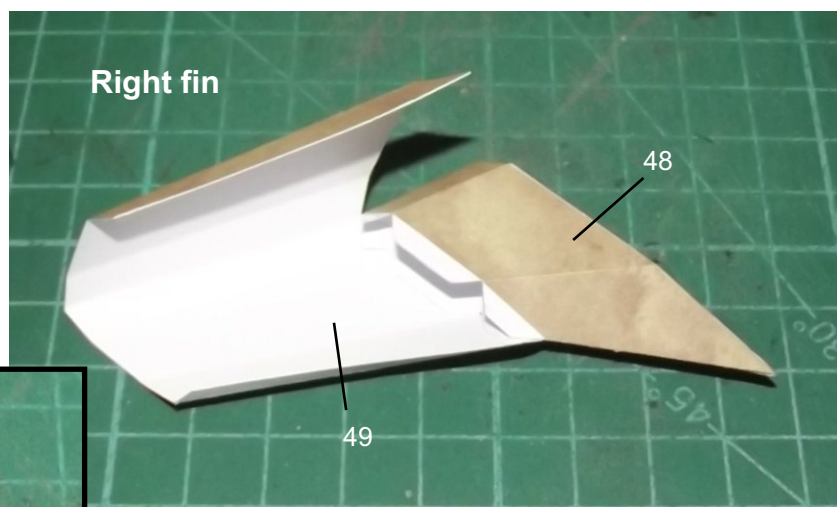
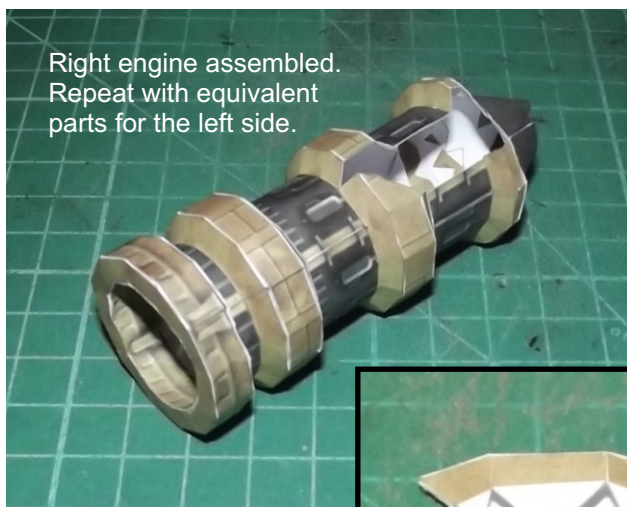
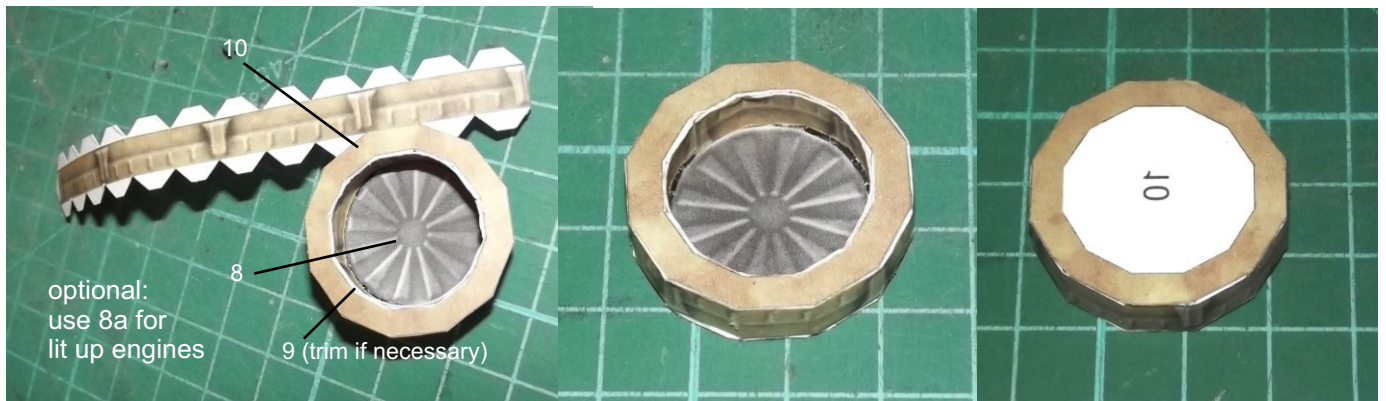
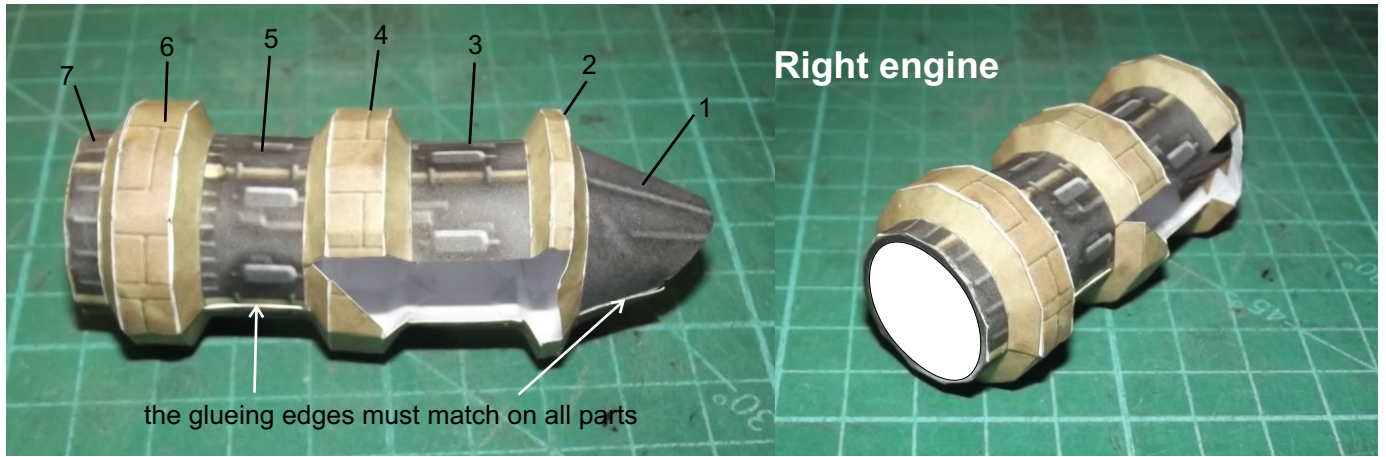


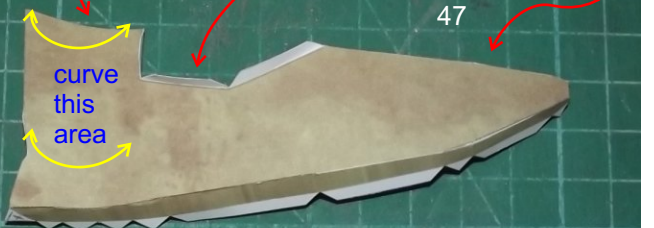
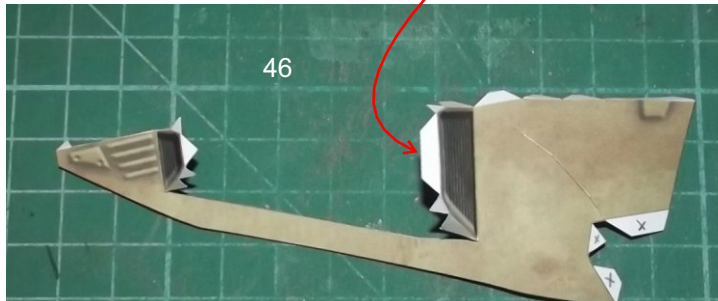
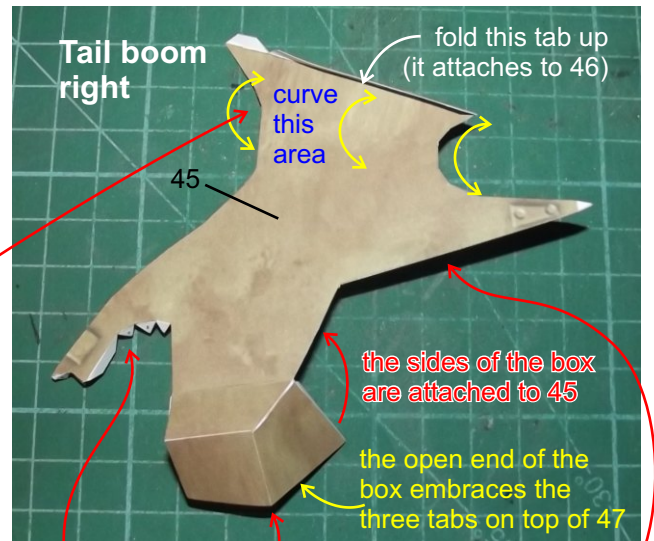
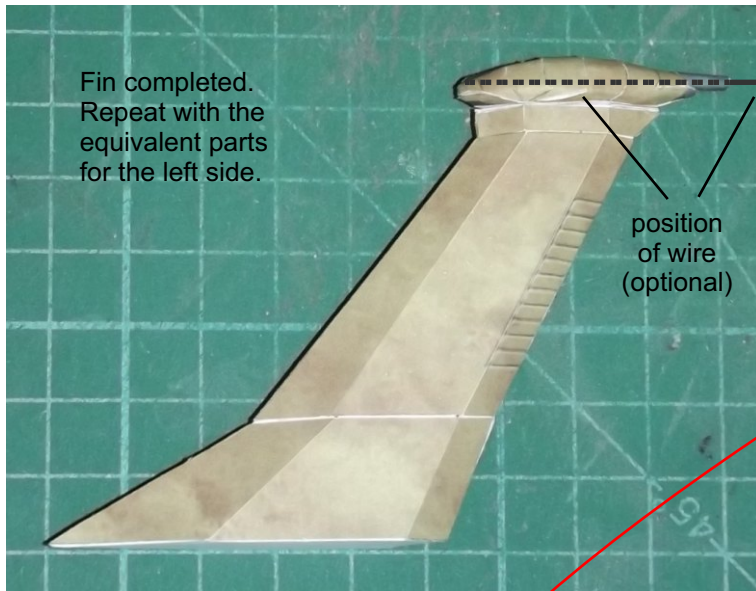




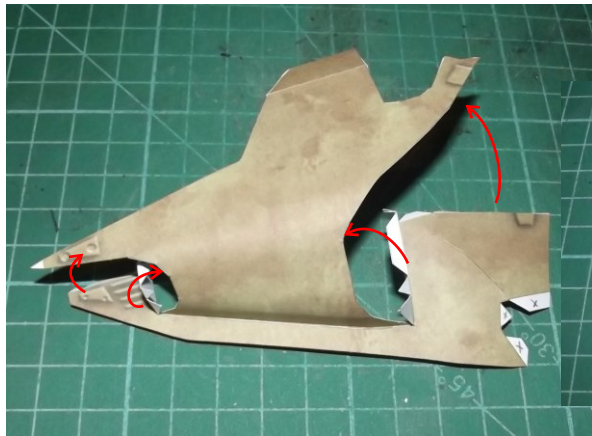
(Note: The picture above shows the assembled model; do not attach the antennas yet to avoid ripping them off by accident.)



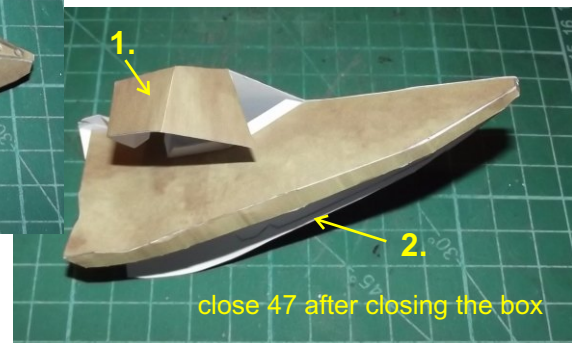




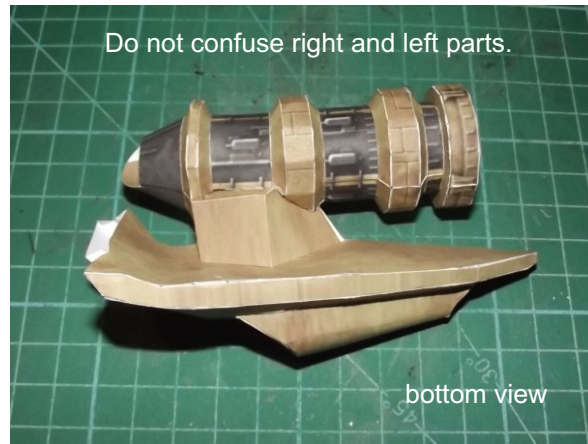
Note: Flaps with a red dot attach to the main cabin. The red arrows show where and how the parts are attached.



use the open ends of 47 to apply pressure on the flaps while glueing the box



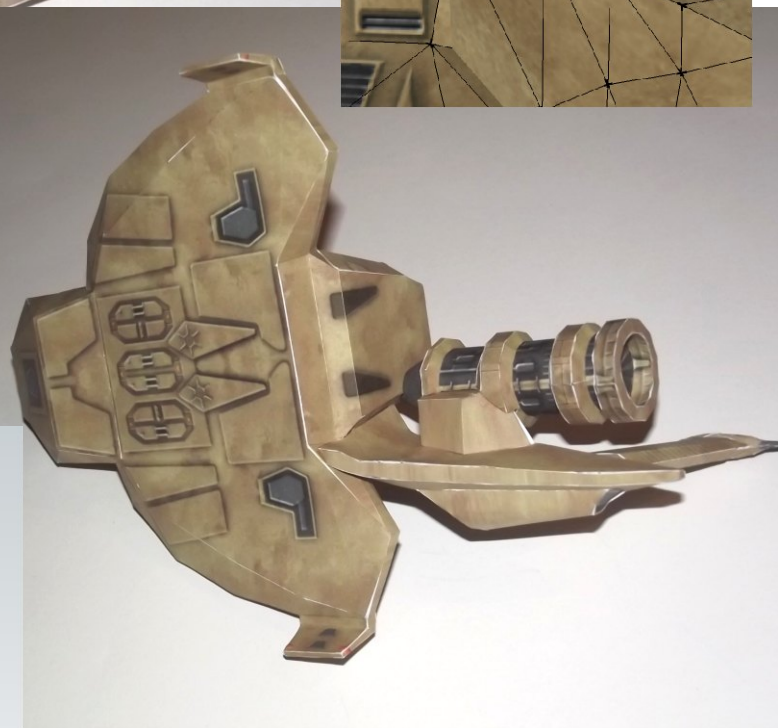
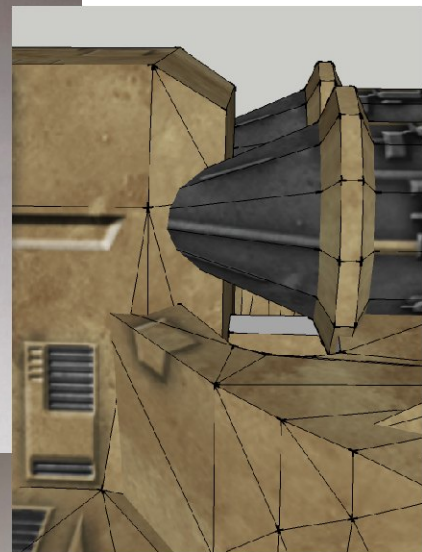
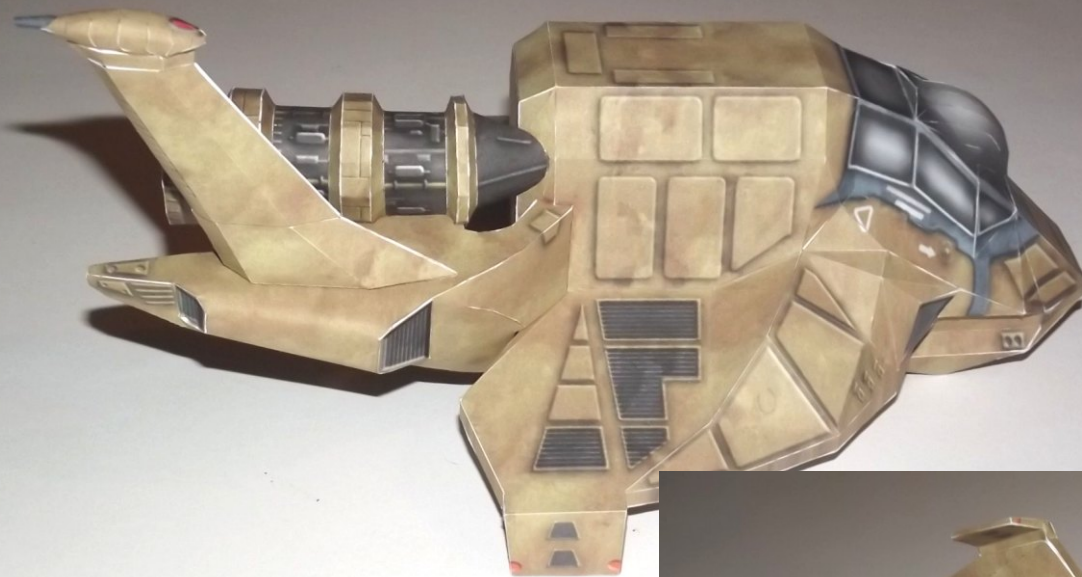
Right tail boom complete. Repeat with the equivalent parts for the left side.



Attach the fins and glue the completed structures to the main cabin. Use the pics for reference.

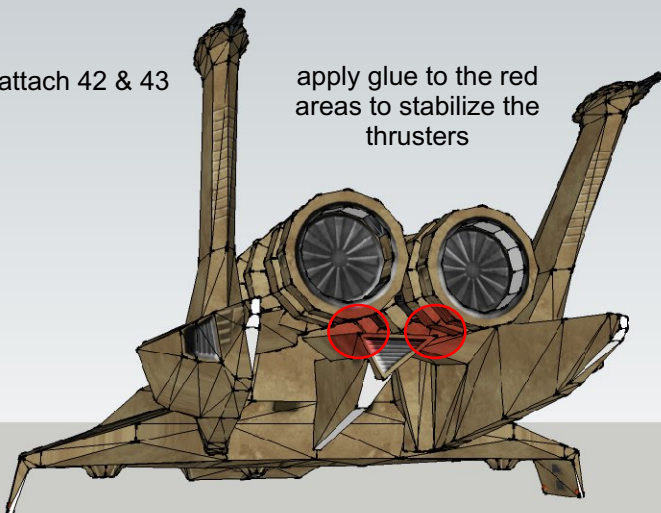
The white marking on 45 is slightly smaller than the foot of the wing to ensure that it is fully covered by the wing.

Align the structures so that the engines are parallel to the roof.



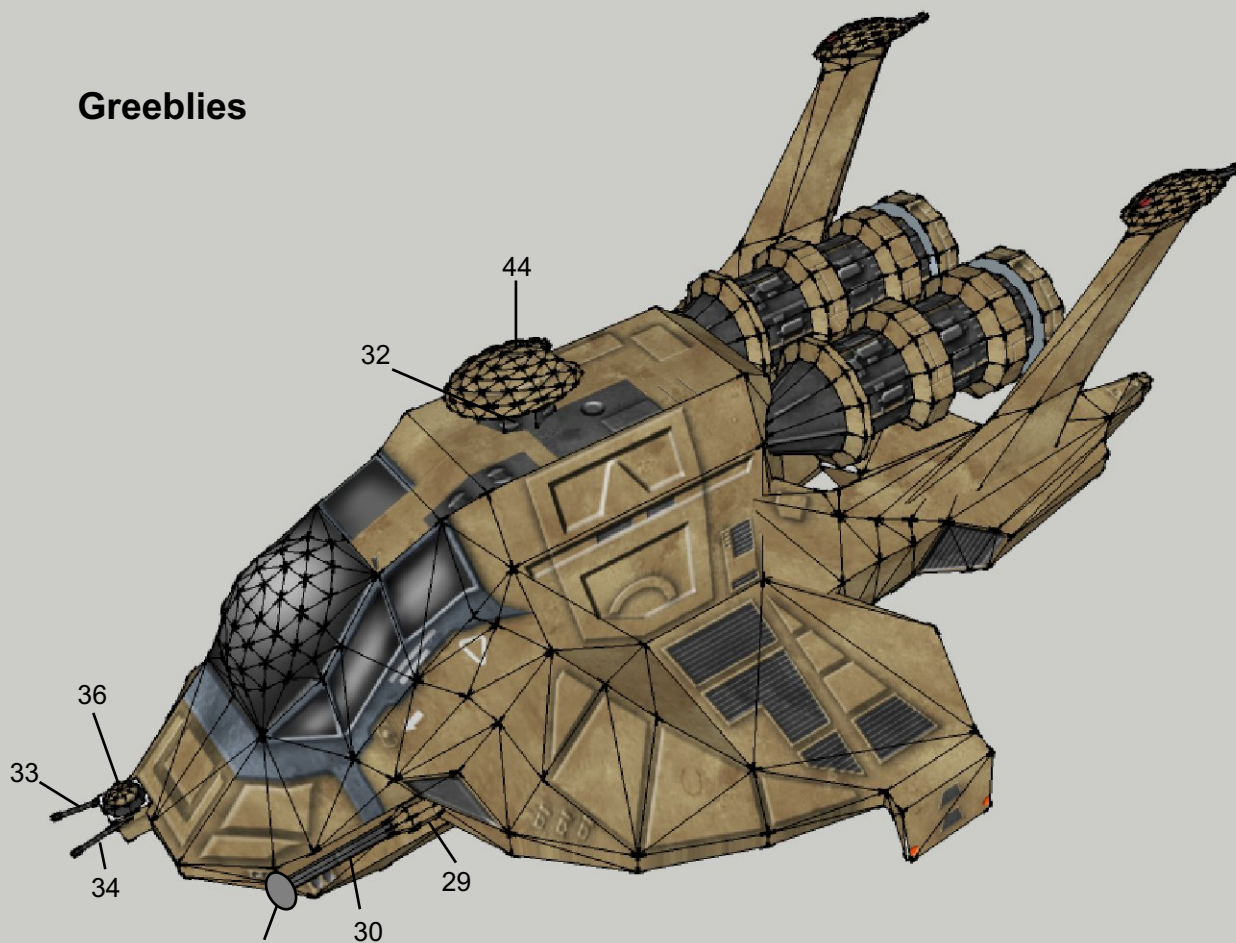
attach 42 & 43

apply glue to the red areas to stabilize the thrusters

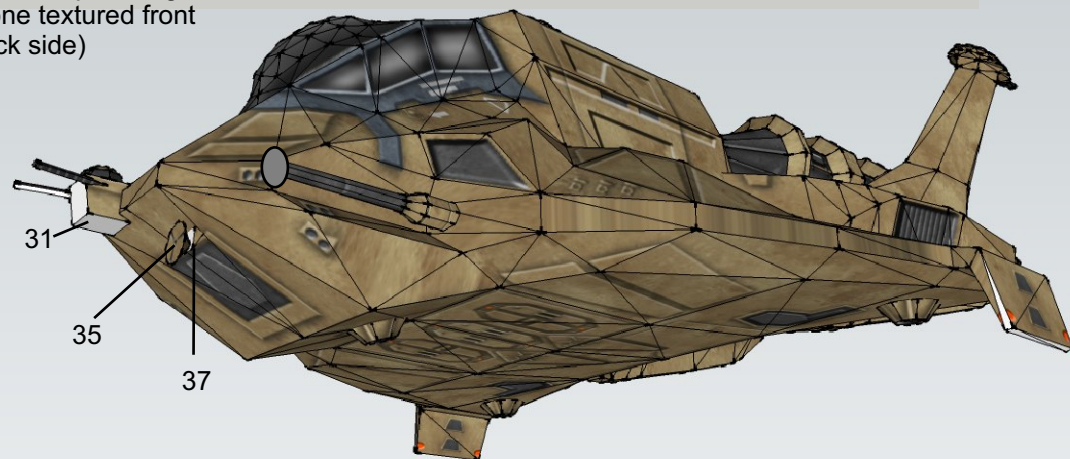


Note: Originally the rear end of 43 sits a bit deeper than the front end. This is the correct position as you can see in the picture on the left. However, if you mount it that way the thrusters have no additional support. I found out that without additional support the construction is fairly shaky. So I think this deviation is acceptable and necessary.

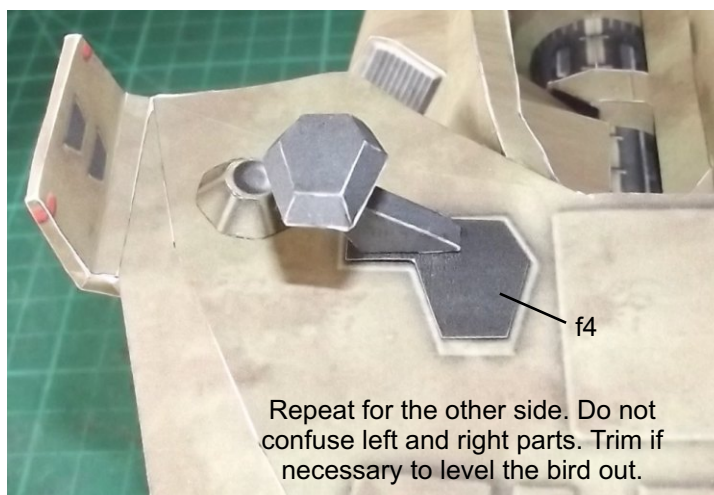
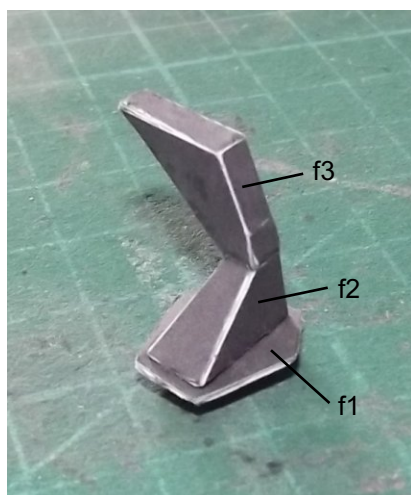
Greeblies



54 (glue both parts together to get one textured front and back side)



Optional: Landing gear



Repeat for the other side. Do not confuse left and right parts. Trim if necessary to level the bird out.

Done!

